

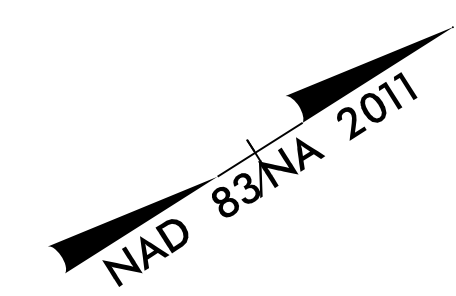
NOTE: ALL EROSION CONTROL DEVICES SHOWN ARE LOCATED WITHIN EXISTING RW OR EASEMENT.

NOTE: CONTRACTOR SHALL PROVIDE GROUND COVER ON EXPOSED SLOPES IN ACCORDANCE WITH THE "SOIL STABILIZATION TIMEFRAMES," SEE EC-3.

NOTE: CONTRACTOR SHALL PROVIDE INLET PROTECTION FOR PARTIALLY INSTALLED STORM DRAINS. THIS MEASURE SHOULD BE INSTALLED AT THE END OF EACH WORKING DAY.

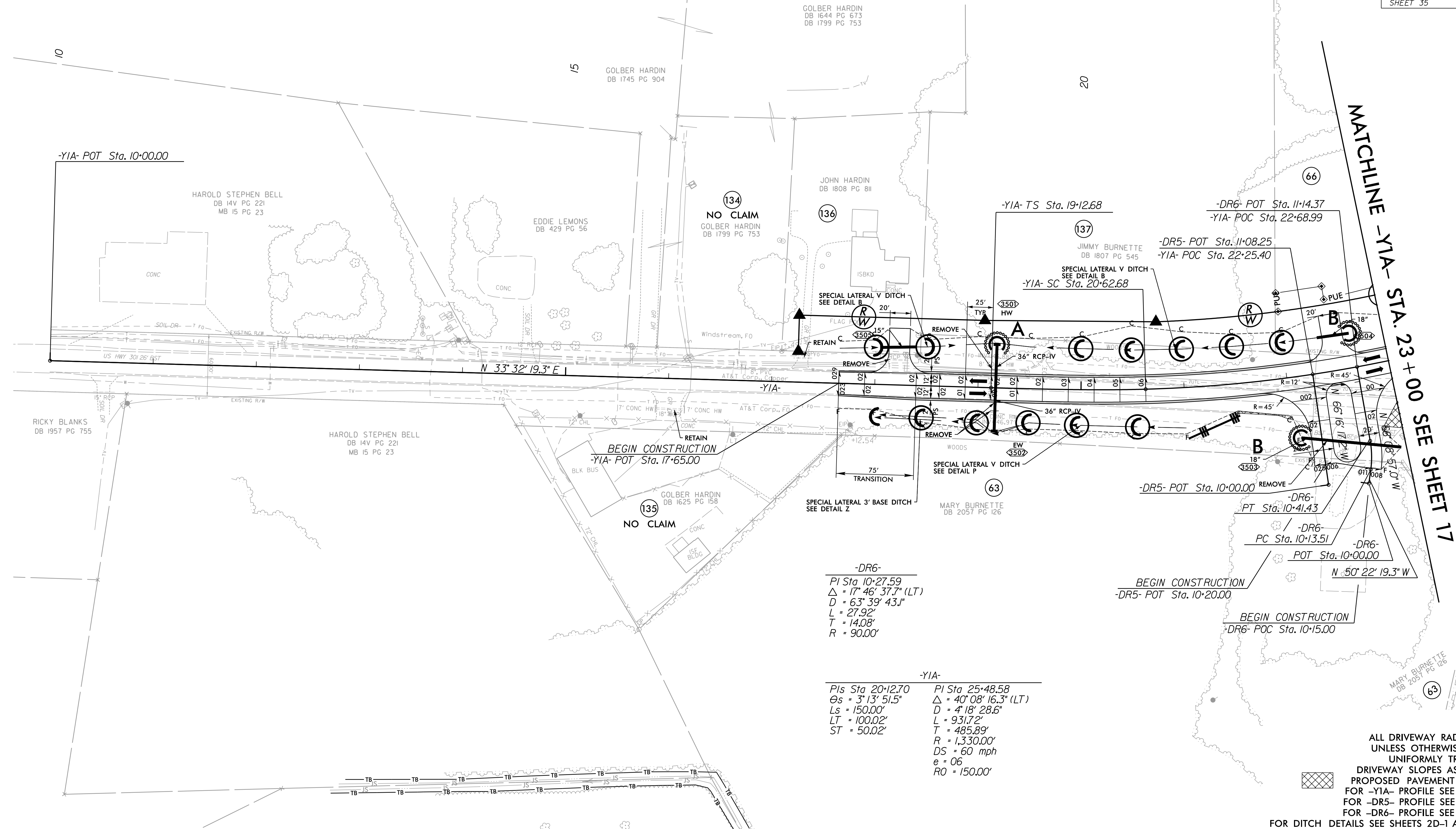
NOTE: CONTRACTOR SHALL MAINTAIN ALL DEVICES AS PROJECT IS BROUGHT UP TO GRADE.

NOTE: INSTALL MATTING FOR EROSION CONTROL IN ALL PROPOSED DITCH LINES EXCEPT WHERE PERMANENT LINERS ARE SPECIFIED ON THE PLANS OR DIRECTED OTHERWISE BY THE ENGINEER.



FINAL EROSION CONTROL FOR CONSTRUCTION SHEET 35

REVISIONS



MATCHLINE -YIA- STA. 23+00 SEE SHEET 17

-DR6-
 PI Sta 10+27.59
 $\Delta = 17^{\circ} 46' 37.7"$ (LT)
 $D = 63^{\circ} 39' 43.1"$
 $L = 27.92'$
 $T = 14.08'$
 $R = 90.00'$

-YIA-
 Pls Sta 20+12.70 PI Sta 25+48.58
 $\Theta_s = 3^{\circ} 13' 51.5"$ $\Delta = 40^{\circ} 08' 16.3"$ (LT)
 $L_s = 150.00'$ $D = 4^{\circ} 18' 28.6"$
 $LT = 100.02'$ $L = 931.72'$
 $ST = 50.02'$ $T = 485.89'$
 $R = 1,330.00'$
 $DS = 60 \text{ mph}$
 $e = 06$
 $RO = 150.00'$

ALL DRIVEWAY RADII ARE 20' UNLESS OTHERWISE NOTED.
 UNIFORMLY TRANSITION DRIVEWAY SLOPES AS SHOWN.
 PROPOSED PAVEMENT REMOVAL FOR -YIA- PROFILE SEE SHEET 74
 FOR -DR5- PROFILE SEE SHEET 92
 FOR -DR6- PROFILE SEE SHEET 93
 FOR DITCH DETAILS SEE SHEETS 2D-1 AND 2D-2

8/17/99
 4/7/2022
 R:\E:\2020\Commental\Design\15987A_EC_PSH_071.dgn
 samuel.skalata