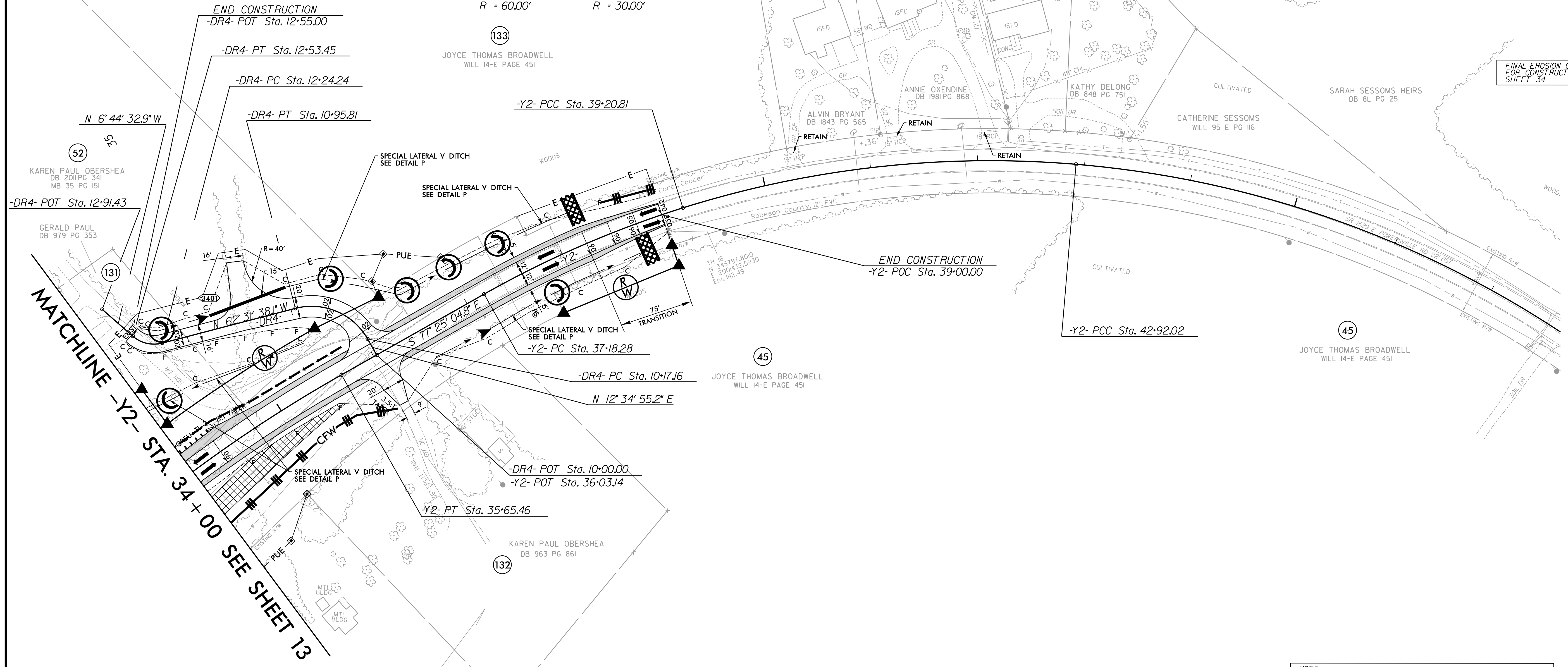




-Y2-			
PI Sta 33+89.51	PI Sta 38+19.92	PI Sta 41+08.78	PI Sta 45+71.93
$\Delta = 15^{\circ} 15' 02.8''$ (RT)	$\Delta = 12^{\circ} 03' 27.5''$ (RT)	$\Delta = 22^{\circ} 14' 07.1''$ (RT)	$\Delta = 32^{\circ} 16' 00.1''$ (RT)
D = 4' 18' 28.6"	D = 5' 57' 11.9"	D = 5' 59' 23.8"	D = 5' 55' 16.6"
L = 354.0'	L = 202.54'	L = 371.21'	L = 544.93'
T = 178.06'	T = 101.64'	T = 187.97'	T = 279.90'
R = 1,330.00'	R = 962.42'	R = 956.53'	R = 967.63'
DS = 60 mph	DS = EXIST.		
e = 06	e = EXIST.		
RO = 150.00'			

-DR4-	
PI Sta 10+63.29	PI Sta 12+40.12
$\Delta = 75^{\circ} 06' 33.2''$ (LT)	$\Delta = 55^{\circ} 47' 05.2''$ (RT)
D = 95' 29' 34.7"	D = 190' 59' 09.4"
L = 78.65'	L = 29.21'
T = 46.33'	T = 15.88'
R = 60.00'	R = 30.00'



- NOTE: ALL EROSION CONTROL DEVICES SHOWN ARE LOCATED WITHIN EXISTING RW OR EASEMENT.
- NOTE: CONTRACTOR SHALL PROVIDE GROUND COVER ON EXPOSED SLOPES IN ACCORDANCE WITH THE "SOIL STABILIZATION TIMEFRAMES", SEE EC-3.
- NOTE: CONTRACTOR SHALL PROVIDE INLET PROTECTION FOR PARTIALLY INSTALLED STORM DRAINS. THIS MEASURE SHOULD BE INSTALLED AT THE END OF EACH WORKING DAY.
- NOTE: CONTRACTOR SHALL MAINTAIN ALL DEVICES AS PROJECT IS BROUGHT UP TO GRADE.
- NOTE: INSTALL MATTING FOR EROSION CONTROL IN ALL PROPOSED DITCH LINES EXCEPT WHERE PERMANENT LINERS ARE SPECIFIED ON THE PLANS OR DIRECTED OTHERWISE BY THE ENGINEER.

ALL DRIVEWAY RADII ARE 20'
 UNLESS OTHERWISE NOTED.
 UNIFORMLY TRANSITION
 DRIVEWAY SLOPES AS SHOWN.
 PROPOSED PAVEMENT REMOVAL
 FOR -Y2- PROFILE SEE SHEET 72, 73
 FOR -DR4- PROFILE SEE SHEET 92
 FOR DITCH DETAILS SEE SHEETS 2D-1 AND 2D-2

REVISIONS
 ROW REVISION - 11/23/2021 - CHANGED DRIVEWAY AND EASEMENT ON PARCELS 52, 131, & 133 - CDA

4/7/2022
 R:\E:\Ordnamental\Design\15987A_EC_PSH_070.dgn
 samuel.skala