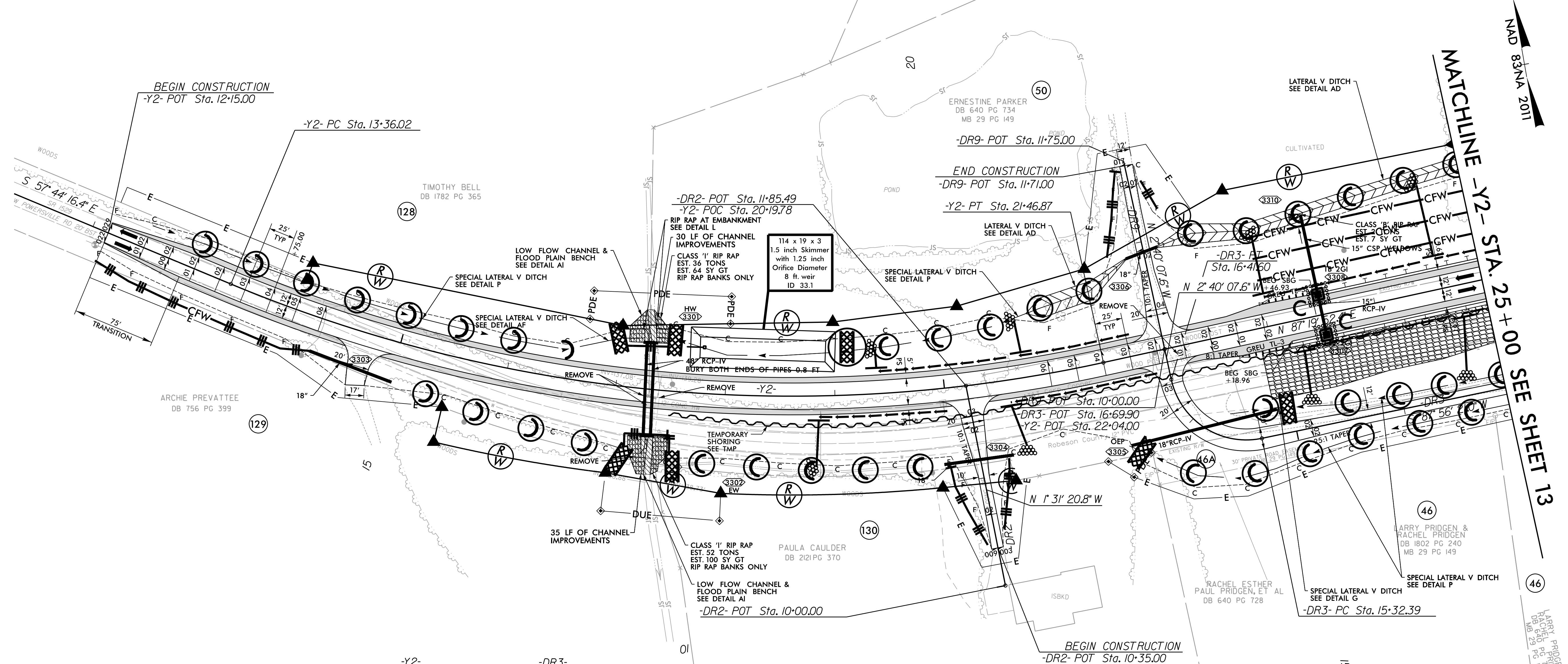


FINAL EROSION CONTROL FOR CONSTRUCTION SHEET 33

- NOTE: ALL EROSION CONTROL DEVICES SHOWN ARE LOCATED WITHIN EXISTING RW OR EASEMENT.
- NOTE: CONTRACTOR SHALL PROVIDE GROUND COVER ON EXPOSED SLOPES IN ACCORDANCE WITH THE "SOIL STABILIZATION TIMEFRAMES", SEE EC-3.
- NOTE: CONTRACTOR SHALL PROVIDE INLET PROTECTION FOR PARTIALLY INSTALLED STORM DRAINS. THIS MEASURE SHOULD BE INSTALLED AT THE END OF EACH WORKING DAY.
- NOTE: CONTRACTOR SHALL MAINTAIN ALL DEVICES AS PROJECT IS BROUGHT UP TO GRADE.
- NOTE: INSTALL MATTING FOR EROSION CONTROL IN ALL PROPOSED DITCH LINES EXCEPT WHERE PERMANENT LINERS ARE SPECIFIED ON THE PLANS OR DIRECTED OTHERWISE BY THE ENGINEER.
- NOTE: UTILIZE FABRIC INSERT INLET PROTECTION DEVICES IN LIEU OF ROCK INLET SEDIMENT TRAPS TYPE C, AS DIRECTED TO AVOID IMPOUNDMENT OF RUNOFF IN ROADWAY OPEN TO TRAFFIC.

REVISIONS
 ROW REVISION - 11/23/2021 - CHANGED PARCEL NUMBER 47 TO 46. PARCEL NUMBER 47 IS REMOVED (NOT USED) - CDA
 ROW REVISION - 11/23/2021 - CHANGED DRIVEWAY, REMOVED PROPOSED ROW, ADDED TCE AND 30' PRIVATE ROAD EASEMENT ON PARCEL 46 - CDA
 ROW REVISION - 11/23/2021 - ADDED TCE AND PDE ON PARCEL 130 - CDA
 ROW REVISION - 12/3/2021 - ADDED PARCEL 46A FOR EXISTING 30' PRIVATE ROAD EASEMENT - CDA



-Y2-	-DR3-
PI Sta 17+54.49	PI Sta 16+01.65
Δ = 34° 55' 51.3" (LT)	Δ = 89° 23' 31.4" (RT)
D = 4' 18" 28.6"	D = 8' 5' 04.0"
L = 810.85'	L = 109.21'
T = 418.47'	T = 69.26'
R = 1,330.00'	R = 70.00'
DS = 60 mph	
e = 06	
RO = 150.00'	

PROPOSED ROCK PLATING
 STEEPEN SLOPE FROM -Y2- STA. 22+50.00
 TO 27+00.00 RT. (SEE CROSS SECTIONS)
 SEE DETAIL SHEET 2G-x FOR ROCK PLATING
 ALL DRIVEWAY RADII ARE 20'
 UNLESS OTHERWISE NOTED.
 UNIFORMLY TRANSITION
 DRIVEWAY SLOPES AS SHOWN.
 FOR -Y2- PROFILE SEE SHEET 72
 FOR -DR2- PROFILE SEE SHEET 91
 FOR -DR3- PROFILE SEE SHEET 91
 FOR DITCH DETAILS SEE SHEETS 2D-1 AND 2D-2

4/7/2022
 R:\E:\Commentary\Design\15987A_EC_PSH_069.dwg
 samuel.skalata