

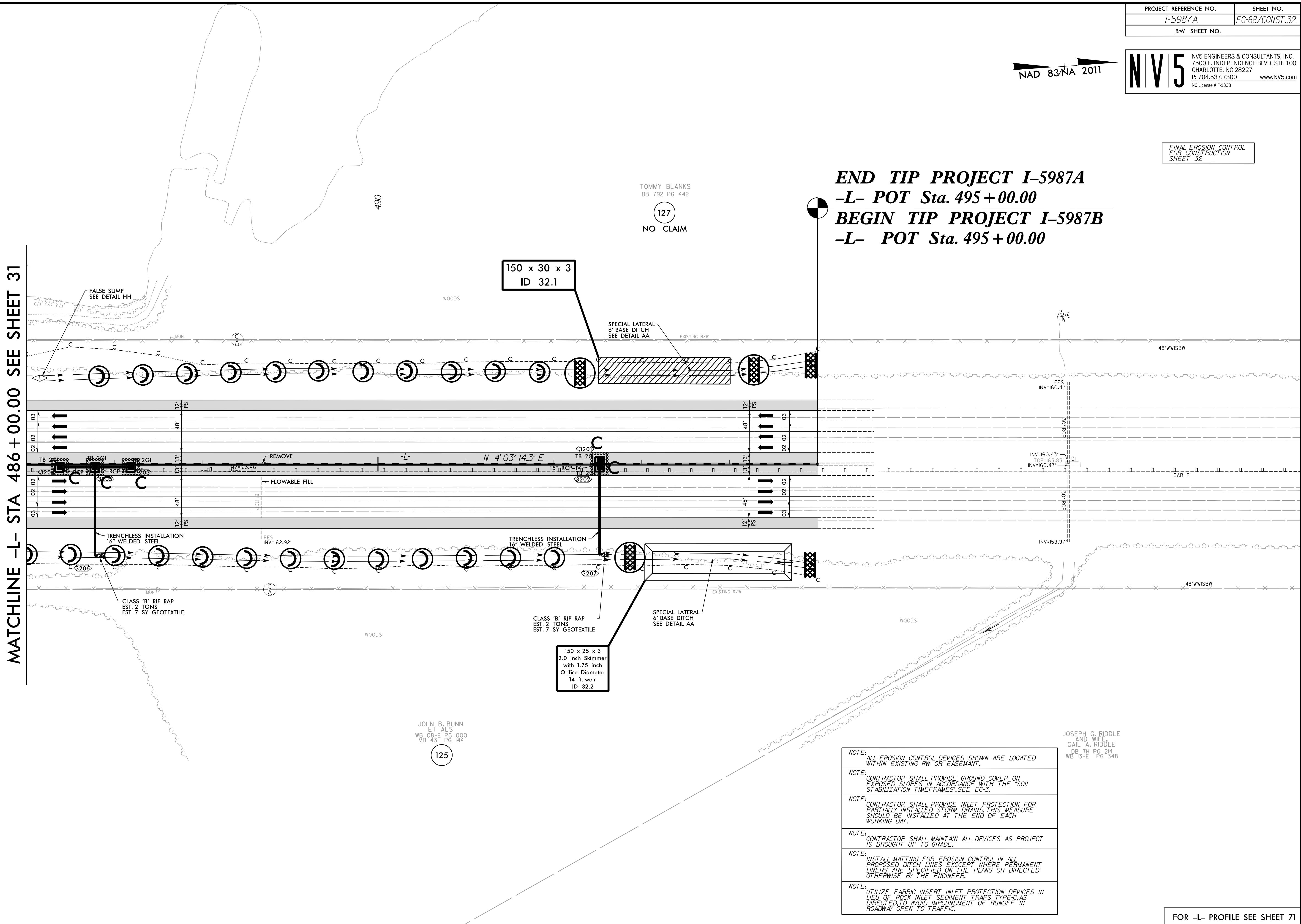
NAD 83/NA 2011

**NV5** NV5 ENGINEERS & CONSULTANTS, INC.  
 7500 E. INDEPENDENCE BLVD, STE 100  
 CHARLOTTE, NC 28227  
 P: 704.537.7300 www.NV5.com  
 NC License # F-1333

FINAL EROSION CONTROL FOR CONSTRUCTION SHEET 32

**END TIP PROJECT I-5987A**  
**-L- POT Sta. 495 + 00.00**  
**BEGIN TIP PROJECT I-5987B**  
**-L- POT Sta. 495 + 00.00**

MATCHLINE -L- STA 486 + 00.00 SEE SHEET 31



150 x 30 x 3  
ID 32.1

150 x 25 x 3  
2.0 inch Skimmer  
with 1.75 inch  
Orifice Diameter  
14 ft. weir  
ID 32.2

REVISIONS

4/7/2022  
 R:\E:\environmental\Design\I5987A\_EC\_PSH\_068.dgn  
 samuel.sokolato

JOHN B. BUNN  
 ET ALS  
 WB 08-E PG 000  
 MB 43 PG 144  
 125

JOSEPH C. RIDDLE  
 AND WIFE  
 GAIL A. RIDDLE  
 DB 7H PG 214  
 WB 13-E PG 348

- NOTE: ALL EROSION CONTROL DEVICES SHOWN ARE LOCATED WITHIN EXISTING RW OR EASEMENT.
- NOTE: CONTRACTOR SHALL PROVIDE GROUND COVER ON EXPOSED SLOPES IN ACCORDANCE WITH THE "SOIL STABILIZATION TIMEFRAMES" SEE EC-3.
- NOTE: CONTRACTOR SHALL PROVIDE INLET PROTECTION FOR PARTIALLY INSTALLED STORM DRAINS. THIS MEASURE SHOULD BE INSTALLED AT THE END OF EACH WORKING DAY.
- NOTE: CONTRACTOR SHALL MAINTAIN ALL DEVICES AS PROJECT IS BROUGHT UP TO GRADE.
- NOTE: INSTALL MATTING FOR EROSION CONTROL IN ALL PROPOSED DITCH LINES EXCEPT WHERE PERMANENT LINERS ARE SPECIFIED ON THE PLANS OR DIRECTED OTHERWISE BY THE ENGINEER.
- NOTE: UTILIZE FABRIC INSERT INLET PROTECTION DEVICES IN LIEU OF ROCK INLET SEDIMENT TRAPS TYPE-C AS DIRECTED TO AVOID IMPEDIMENT OF RUNOFF IN ROADWAY OPEN TO TRAFFIC.

FOR -L- PROFILE SEE SHEET 71