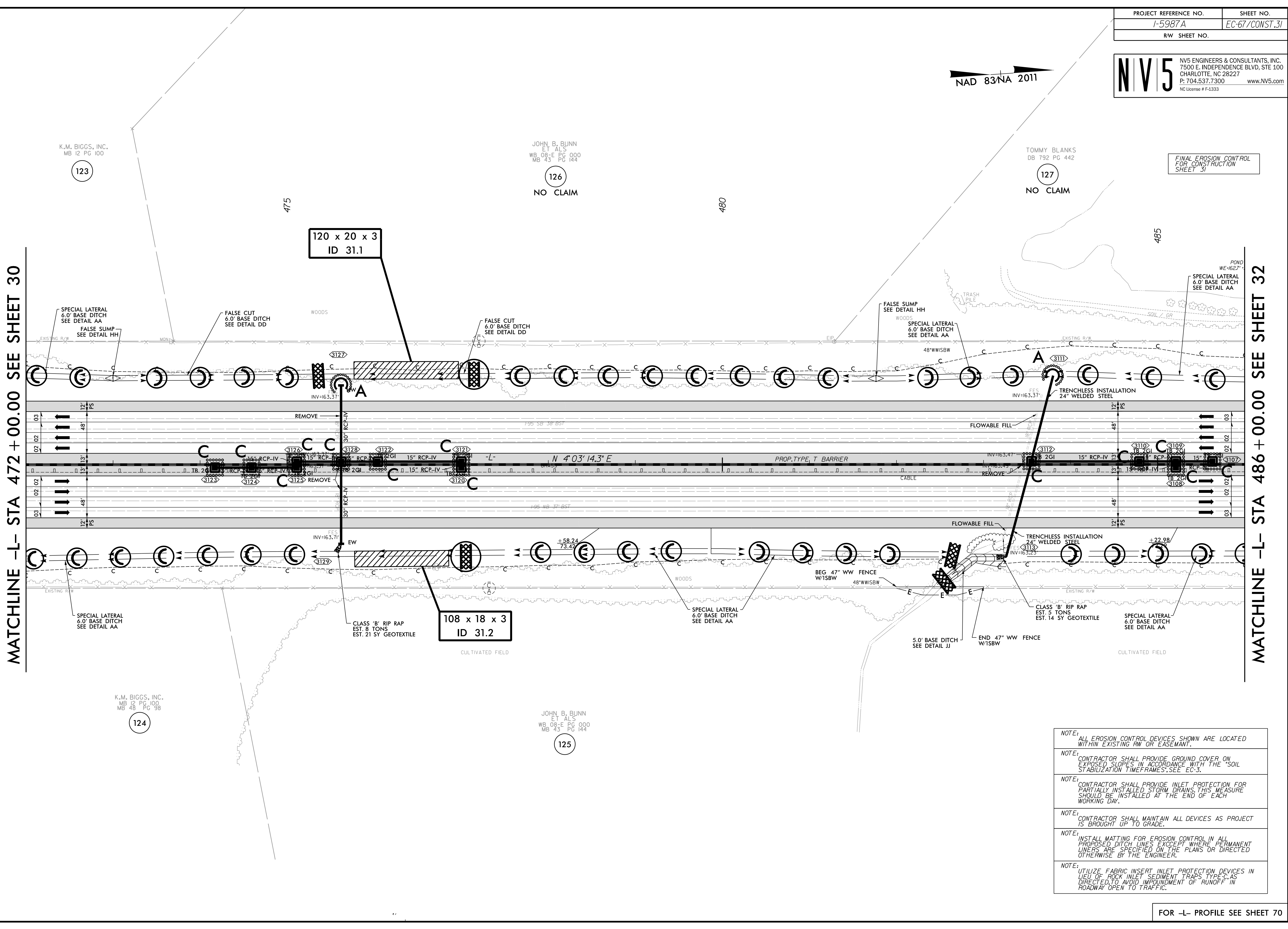


NAD 83/NA 2011

MATCHLINE -L- STA 472 + 00.00 SEE SHEET 30

MATCHLINE -L- STA 486 + 00.00 SEE SHEET 32



REVISIONS

- NOTE: ALL EROSION CONTROL DEVICES SHOWN ARE LOCATED WITHIN EXISTING RW OR EASEMENT.
- NOTE: CONTRACTOR SHALL PROVIDE GROUND COVER ON EXPOSED SLOPES IN ACCORDANCE WITH THE "SOIL STABILIZATION TIMEFRAMES", SEE EC-3.
- NOTE: CONTRACTOR SHALL PROVIDE INLET PROTECTION FOR PARTIALLY INSTALLED STORM DRAINS. THIS MEASURE SHOULD BE INSTALLED AT THE END OF EACH WORKING DAY.
- NOTE: CONTRACTOR SHALL MAINTAIN ALL DEVICES AS PROJECT IS BROUGHT UP TO GRADE.
- NOTE: INSTALL MATTING FOR EROSION CONTROL IN ALL PROPOSED DITCH LINES EXCEPT WHERE PERMANENT LINERS ARE SPECIFIED ON THE PLANS OR DIRECTED OTHERWISE BY THE ENGINEER.
- NOTE: UTILIZE FABRIC INSERT INLET PROTECTION DEVICES IN LIEU OF ROCK INLET SEDIMENT TRAPS TYPE C, AS DIRECTED, TO AVOID IMPEDIMENT OF RUNOFF IN ROADWAY OPEN TO TRAFFIC.

FOR -L- PROFILE SEE SHEET 70

8/17/99
 4/7/2022
 R:\E:\Environmental\Design\15987A_EC_PSH_067.dgn
 samuel.skalata