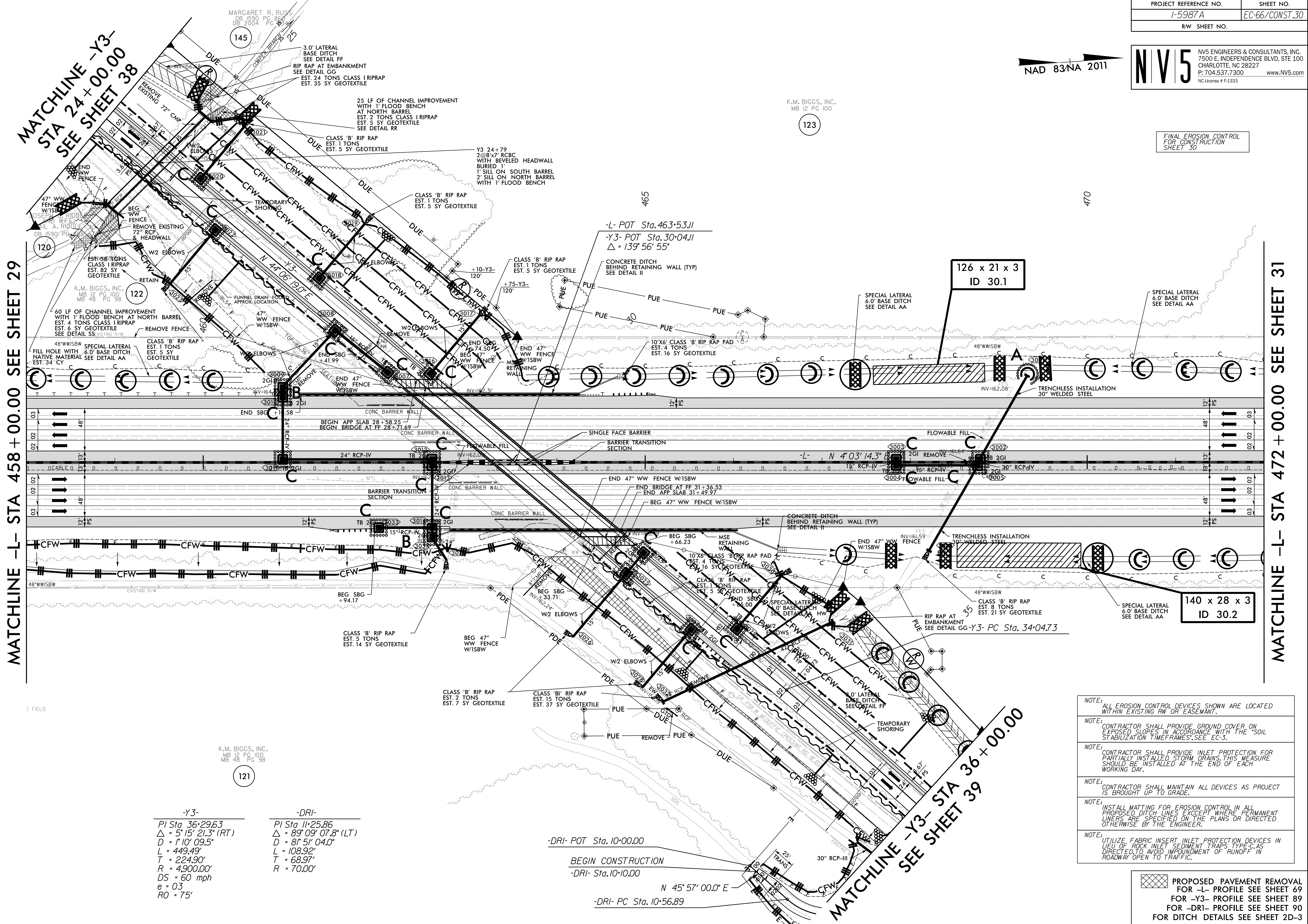


FINAL EROSION CONTROL FOR CONSTRUCTION SHEET 30



MATCHLINE -L- STA 458 + 00.00 SEE SHEET 29

MATCHLINE -L- STA 472 + 00.00 SEE SHEET 31

MATCHLINE -Y3-
 STA 24 + 00.00
 SEE SHEET 38

MATCHLINE -Y3- STA 36 + 00.00
 SEE SHEET 39

-Y3-	-DRI-
PI Sta. 36+29.63	PI Sta. 11+25.86
$\Delta = 5' 15" 21.3" (RT)$	$\Delta = 89' 09" 07.8" (LT)$
$D = 1' 10" 09.5"$	$D = 81' 51" 04.0"$
$L = 449.49'$	$L = 108.92'$
$T = 224.90'$	$T = 68.97'$
$R = 4,900.00'$	$R = 70.00'$
$DS = 60 \text{ mph}$	
$e = 0.3$	
$RO = 75'$	

-DRI- POT Sta. 10+00.00
 BEGIN CONSTRUCTION
 -DRI- Sta. 10+10.00
 -DRI- PC Sta. 10+56.89

- NOTE: ALL EROSION CONTROL DEVICES SHOWN ARE LOCATED WITHIN EXISTING RW OR EASEMENT.
- NOTE: CONTRACTOR SHALL PROVIDE GROUND COVER ON EXPOSED SLOPES IN ACCORDANCE WITH THE "SOIL STABILIZATION TIMEFRAMES" SEE EC-3.
- NOTE: CONTRACTOR SHALL PROVIDE INLET PROTECTION FOR PARTIALLY INSTALLED STORM DRAINS. THIS MEASURE SHOULD BE INSTALLED AT THE END OF EACH WORKING DAY.
- NOTE: CONTRACTOR SHALL MAINTAIN ALL DEVICES AS PROJECT IS BROUGHT UP TO GRADE.
- NOTE: INSTALL MATTING FOR EROSION CONTROL IN ALL PROPOSED DITCH LINES EXCEPT WHERE PERMANENT LINERS ARE SPECIFIED ON THE PLANS OR DIRECTED OTHERWISE BY THE ENGINEER.
- NOTE: UTILIZE FABRIC INSERT INLET PROTECTION DEVICES IN LIEU OF ROCK INLET SEDIMENT TRAPS TYPE C, AS DIRECTED TO AVOID IMPROVEMENT OF RUNOFF IN ROADWAY OPEN TO TRAFFIC.

PROPOSED PAVEMENT REMOVAL FOR -L- PROFILE SEE SHEET 69
 FOR -Y3- PROFILE SEE SHEET 89
 FOR -DRI- PROFILE SEE SHEET 90
 FOR DITCH DETAILS SEE SHEET 2D-3

REVISIONS

4/7/2022
 R:\E\2022\Commentary\Design\15987A_EC_PSH_066.dwg
 samuel.sokolata

8/17/99