

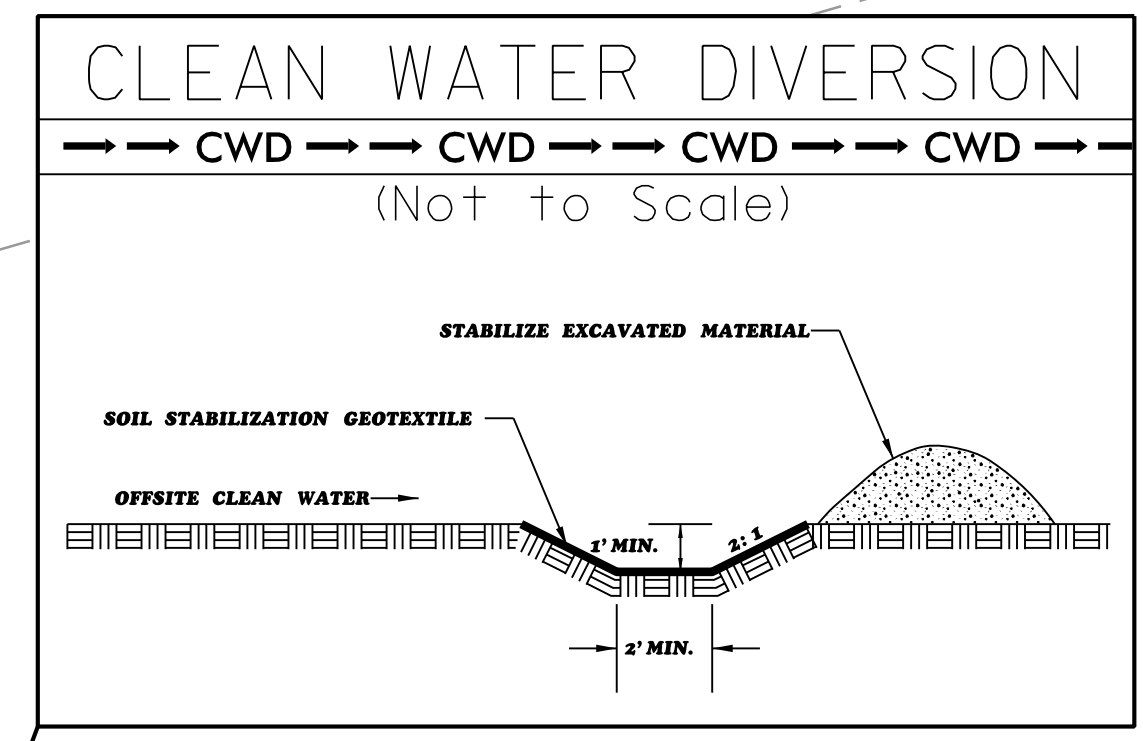
NAD 83/NA 2011

MARY JANE TUCKER HARRELL LIFE ESTATE
 ET ALS
 DB 1810 PG 336
 (117)
 NO CLAIM

-L-
 PI Sta 430+68.94
 $\Delta = 3^{\circ} 33' 35.7''$ (RT)
 $D = 0^{\circ} 12' 03.7''$
 $L = 1,770.78'$
 $T = 885.67'$
 $R = 28,500.00'$
 $DS = 75$ mph
 $e = NC$

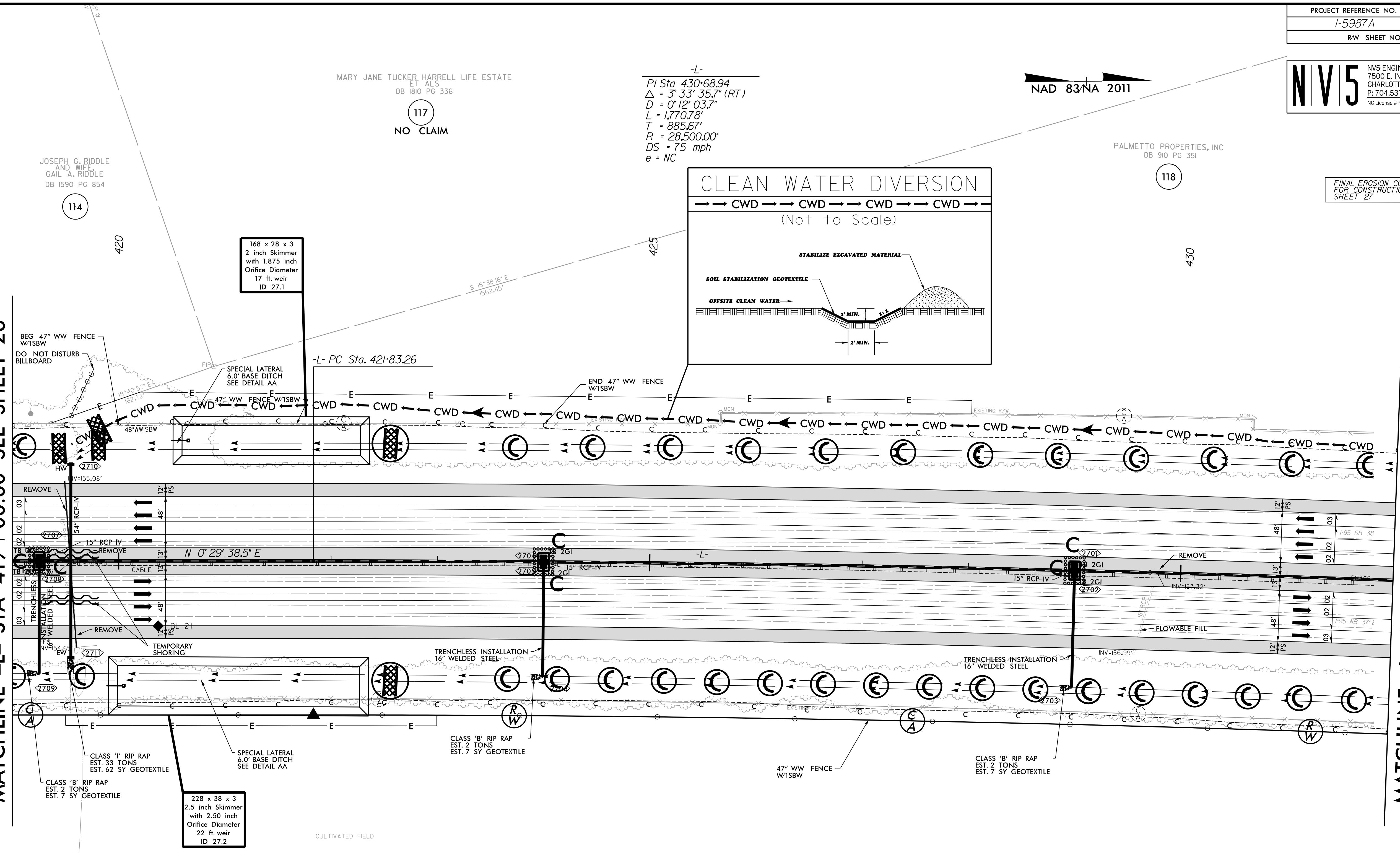
PALMETTO PROPERTIES, INC
 DB 910 PG 351
 (118)

FINAL EROSION CONTROL
 FOR CONSTRUCTION
 SHEET 27



MATCHLINE -L- STA 419 + 00.00 SEE SHEET 26

MATCHLINE -L- STA 432 + 00.00 SEE SHEET 28



REVISIONS
 FROM REVISION - 10/22/2021 - ADDED DO NOT DISTURB BILLBOARD NOTE ON PARCEL 114

4/7/2022
 R:\E:\Commentary\Design\15987A_EC_PSH_063.dwg
 samuel.skala

GEORGE FRANK WHITE LIFE ESTATE
 DB 13E PG 288
 DB 152 PG 531
 DB 175 PG 327
 (116)

- NOTE: ALL EROSION CONTROL DEVICES SHOWN ARE LOCATED WITHIN EXISTING RW OR EASEMENT.
- NOTE: CONTRACTOR SHALL PROVIDE GROUND COVER ON EXPOSED SLOPES IN ACCORDANCE WITH THE "SOIL STABILIZATION TIMEFRAMES" SEE EC-3.
- NOTE: CONTRACTOR SHALL PROVIDE INLET PROTECTION FOR PARTIALLY INSTALLED STORM DRAINS. THIS MEASURE SHOULD BE INSTALLED AT THE END OF EACH WORKING DAY.
- NOTE: CONTRACTOR SHALL MAINTAIN ALL DEVICES AS PROJECT IS BROUGHT UP TO GRADE.
- NOTE: INSTALL MATTING FOR EROSION CONTROL IN ALL PROPOSED DITCH LINES EXCEPT WHERE PERMANENT LINERS ARE SPECIFIED ON THE PLANS OR DIRECTED OTHERWISE BY THE ENGINEER.
- NOTE: UTILIZE FABRIC INSERT INLET PROTECTION DEVICES IN LIEU OF ROCK INLET SEDIMENT TRAPS TYPE-C AS DIRECTED TO AVOID IMPOUNDMENT OF "RUNOFF" IN ROADWAY OPEN TO TRAFFIC.

FOR -L- PROFILE SEE SHEET 66
 FOR DITCH DETAILS SEE SHEET 2D-3