

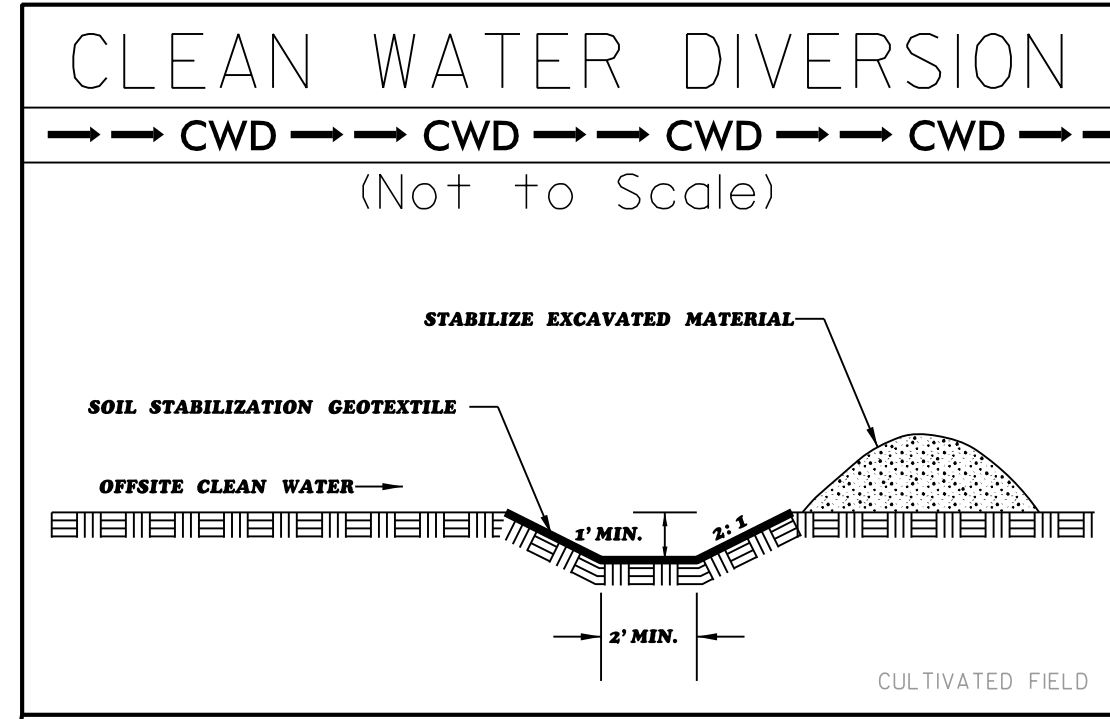
NAD 83/NA 2011

NV5
 NV5 ENGINEERS & CONSULTANTS, INC.
 7500 E. INDEPENDENCE BLVD, STE 100
 CHARLOTTE, NC 28227
 P: 704.537.7300 www.NV5.com
 NC License # F-1333

FINAL EROSION CONTROL FOR CONSTRUCTION SHEET 26

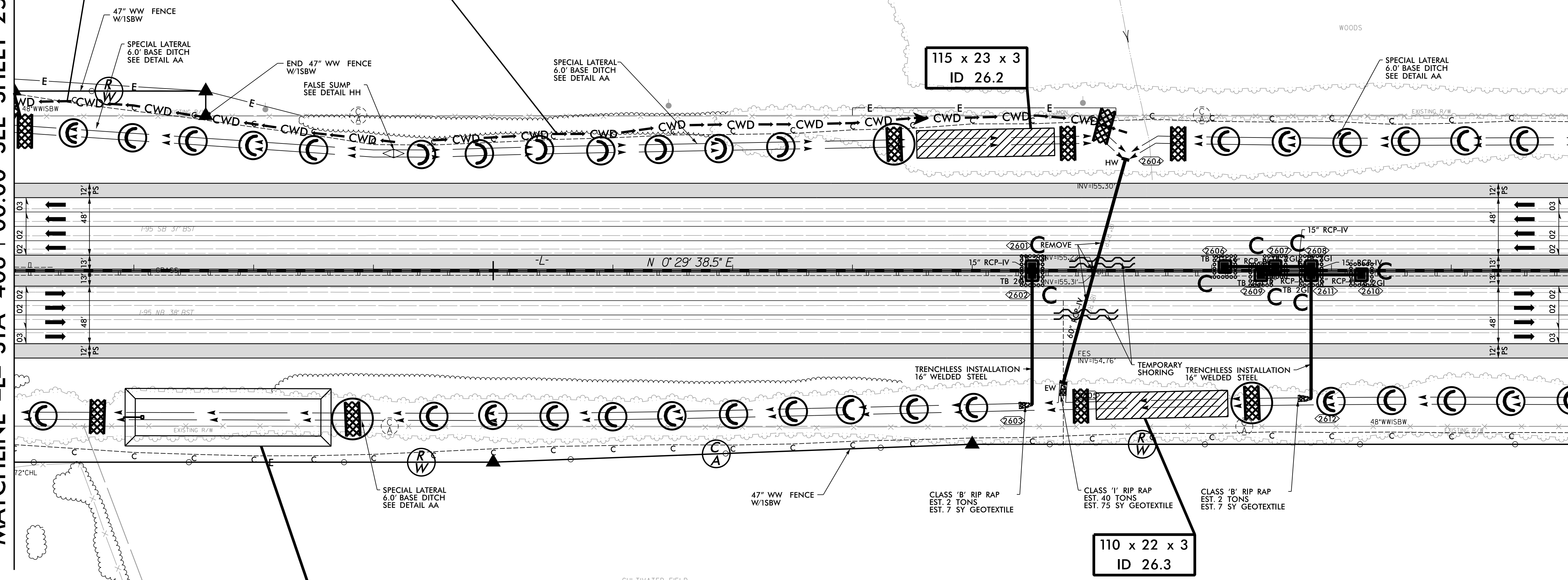
JOSEPH G. RIDDLE AND WIFE
 GAIL A. RIDDLE
 DB 1590 PG 854

114



MATCHLINE -L- STA 406 + 00.00 SEE SHEET 25

MATCHLINE -L- STA 419 + 00.00 SEE SHEET 27



REVISIONS
 ROW REVISION - 10/22/2021 - REVISED PROPERTY LINES TO SHOW PARCEL 115 AS PART OF PARCEL 116. REMOVED PARCEL NUMBER 115 (NOT USED)

RAYMOND W. JONES AND WIFE
 MYRA W. JONES
 DB 1359 PG 85

113

GEORGE FRANK WHITE LIFE ESTATE
 DB 136 PG 288
 DB 152 PG 631
 DB 175 PG 327

116

- NOTE: ALL EROSION CONTROL DEVICES SHOWN ARE LOCATED WITHIN EXISTING RW OR EASEMENT.
- NOTE: CONTRACTOR SHALL PROVIDE GROUND COVER ON EXPOSED SLOPES IN ACCORDANCE WITH THE "SOIL STABILIZATION TIMEFRAMES", SEE EC-3.
- NOTE: CONTRACTOR SHALL PROVIDE INLET PROTECTION FOR PARTIALLY INSTALLED STORM DRAINS. THIS MEASURE SHOULD BE INSTALLED AT THE END OF EACH WORKING DAY.
- NOTE: CONTRACTOR SHALL MAINTAIN ALL DEVICES AS PROJECT IS BROUGHT UP TO GRADE.
- NOTE: INSTALL MATTING FOR EROSION CONTROL IN ALL PROPOSED DITCH LINES EXCEPT WHERE PERMANENT LINERS ARE SPECIFIED ON THE PLANS OR DIRECTED OTHERWISE BY THE ENGINEER.
- NOTE: UTILIZE FABRIC INSERT INLET PROTECTION DEVICES IN LIEU OF ROCK INLET SEDIMENT TRAPS TYPE-C AS DIRECTED TO AVOID IMPOUNDMENT OF RUNOFF IN ROADWAY OPEN TO TRAFFIC.

FOR -L- PROFILE SEE SHEET 65
 FOR DITCH DETAILS SEE SHEET 2D-3