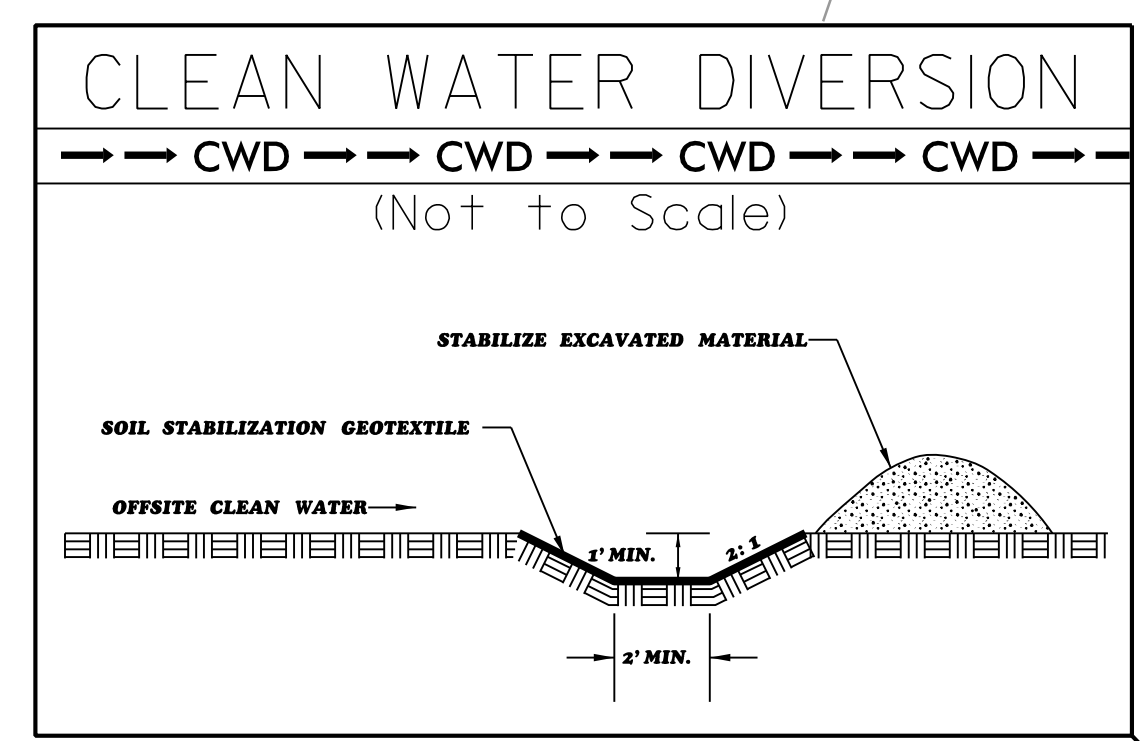


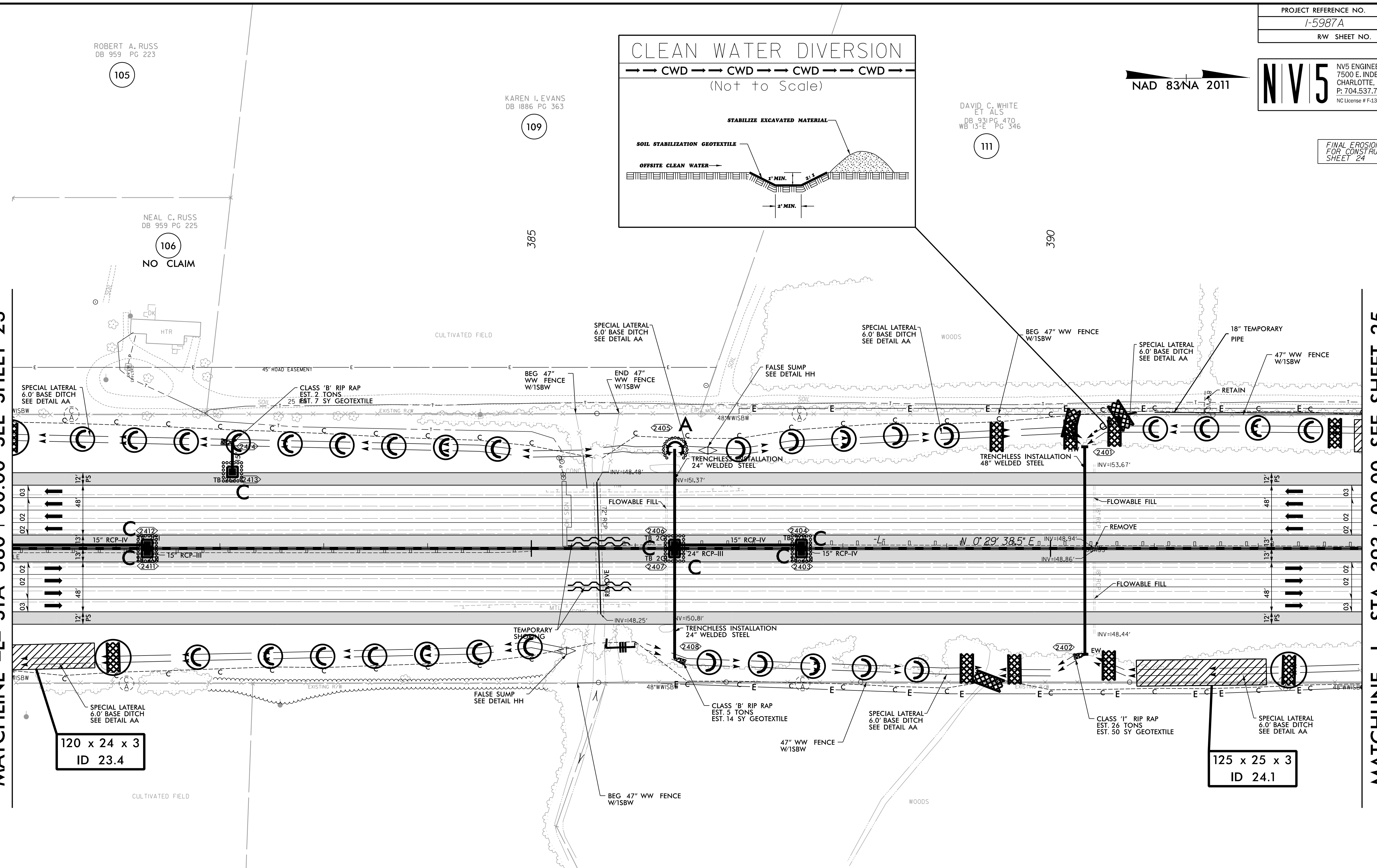
NAD 83/NA 2011

FINAL EROSION CONTROL FOR CONSTRUCTION SHEET 24



MATCHLINE -L- STA 380 + 00.00 SEE SHEET 23

MATCHLINE -L- STA 393 + 00.00 SEE SHEET 25



120 x 24 x 3  
ID 23.4

125 x 25 x 3  
ID 24.1

- NOTE: ALL EROSION CONTROL DEVICES SHOWN ARE LOCATED WITHIN EXISTING RW OR EASEMENT.
- NOTE: CONTRACTOR SHALL PROVIDE GROUND COVER ON EXPOSED SLOPES IN ACCORDANCE WITH THE "SOIL STABILIZATION TIMEFRAMES", SEE EC-3.
- NOTE: CONTRACTOR SHALL PROVIDE INLET PROTECTION FOR PARTIALLY INSTALLED STORM DRAINS. THIS MEASURE SHOULD BE INSTALLED AT THE END OF EACH WORKING DAY.
- NOTE: CONTRACTOR SHALL MAINTAIN ALL DEVICES AS PROJECT IS BROUGHT UP TO GRADE.
- NOTE: INSTALL MATTING FOR EROSION CONTROL IN ALL PROPOSED DITCH LINES EXCEPT WHERE PERMANENT LINERS ARE SPECIFIED ON THE PLANS OR DIRECTED OTHERWISE BY THE ENGINEER.
- NOTE: UTILIZE FABRIC INSERT INLET PROTECTION DEVICES IN LIEU OF ROCK INLET SEDIMENT TRAPS TYPE C AS DIRECTED TO AVOID IMPONDMENT OF RUNOFF IN ROADWAY OPEN TO TRAFFIC.

FRANKLIN G. MELVIN AND WIFE  
GENEVIEVE C. MELVIN  
DB 1499 PG 537

110

REVISIONS

4/7/2022 RA\F\Commentary\Design\15987A\_EC\_PSH\_060.dwg samuel.skalata

ROBERT A. RUSS  
DB 959 PG 223

105

NEAL C. RUSS  
DB 959 PG 225

106

NO CLAIM

KAREN I. EVANS  
DB 1886 PG 363

109

DAVID C. WHITE  
ET ALS  
DB 931 PG 470  
WB 13-E PG 346

111

NEILL D. FOWLER  
DB 784 PG 350  
WB 15-E PG 228

107

NO CLAIM

SHIRLEY M. WARD  
DB 784 PG 360

108