

NAD 83/NA 2011

CAROL POWERS LIFE ESTATE  
 DB 590 PG 363  
 WB 1-E PG 632

THAD J. DAVIS AND WIFE  
 CHERYL J. DAVIS  
 DB 1841 PG 734  
 MB 42 PG 140

CAROL POWERS LIFE ESTATE  
 DB 590 PG 363  
 WB 1-E PG 632

99  
NO CLAIM

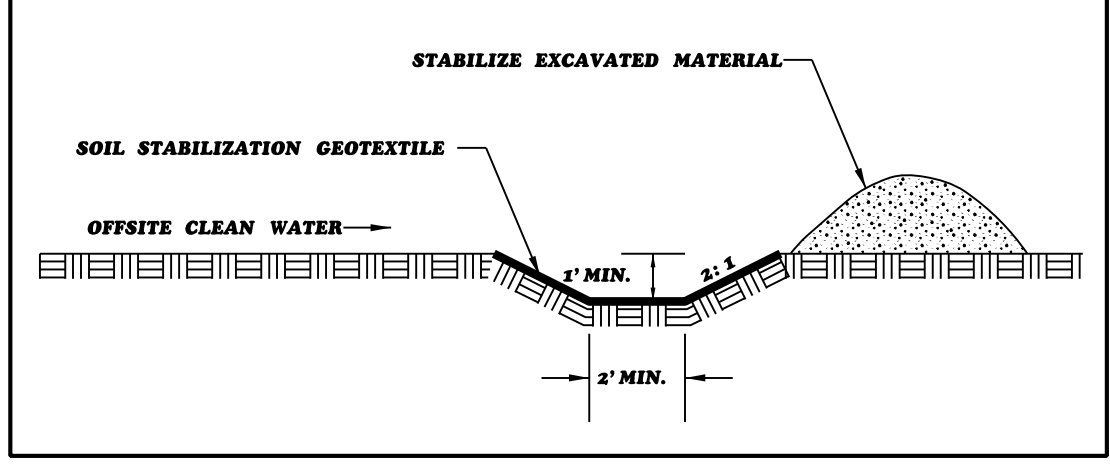
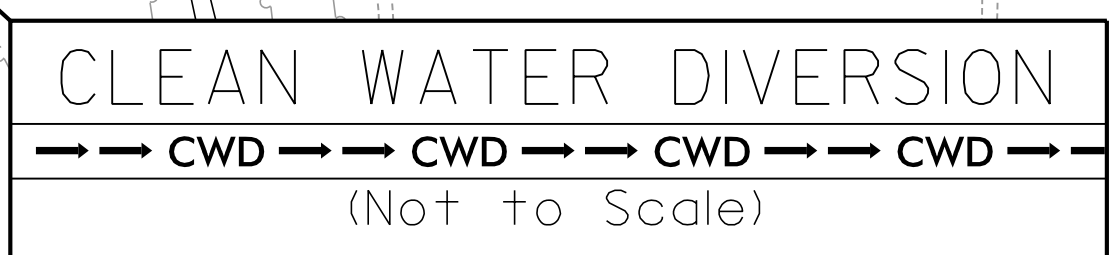
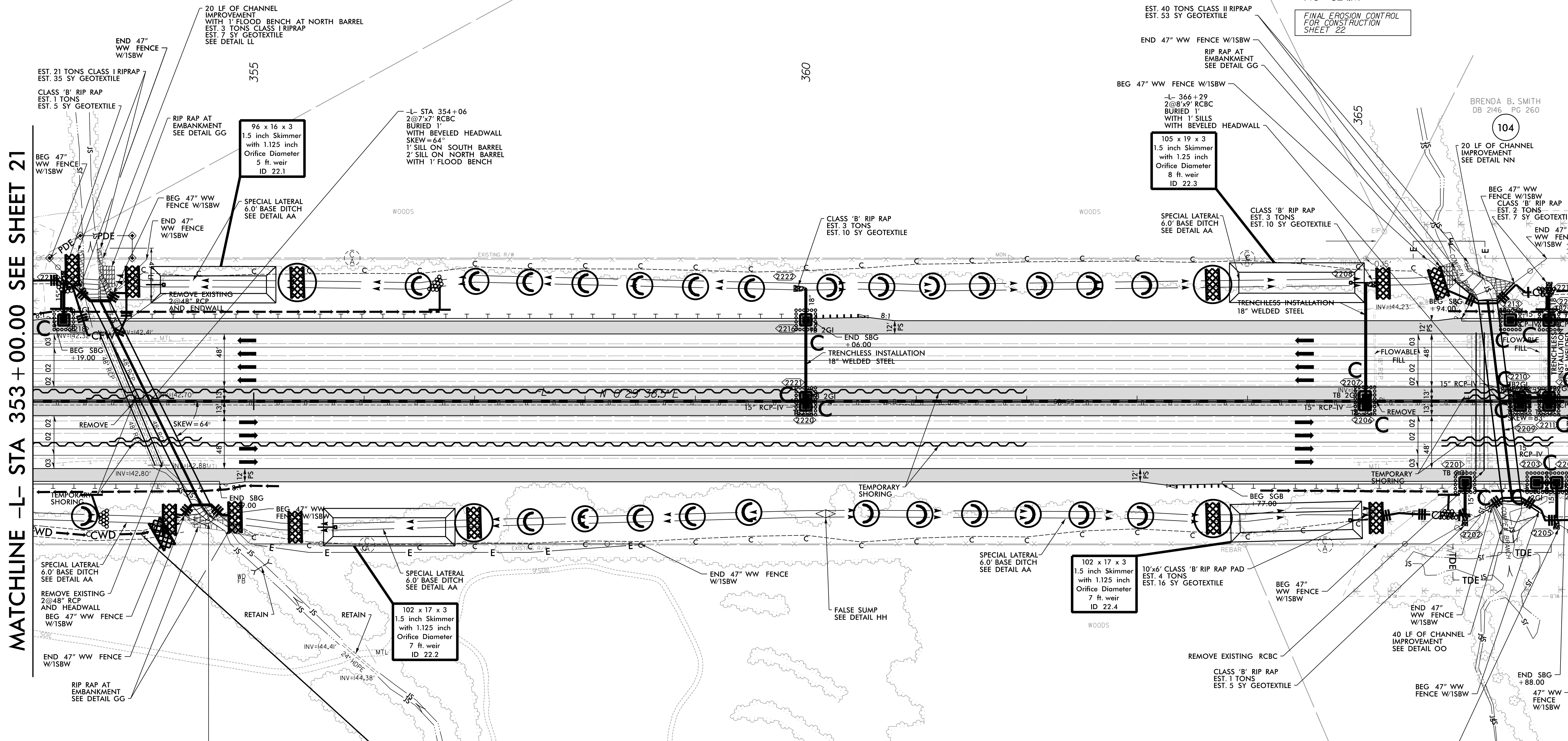
102

99  
NO CLAIM

FINAL EROSION CONTROL FOR CONSTRUCTION SHEET 22

MATCHLINE -L- STA 353 + 00.00 SEE SHEET 21

MATCHLINE -L- STA 367 + 00.00 SEE SHEET 23



- NOTE: ALL EROSION CONTROL DEVICES SHOWN ARE LOCATED WITHIN EXISTING RW OR EASEMENT.
- NOTE: CONTRACTOR SHALL PROVIDE GROUND COVER ON EXPOSED SLOPES IN ACCORDANCE WITH THE "SOIL STABILIZATION TIMEFRAMES," SEE EC-3.
- NOTE: CONTRACTOR SHALL PROVIDE INLET PROTECTION FOR PARTIALLY INSTALLED STORM DRAINS; THIS MEASURE SHOULD BE INSTALLED AT THE END OF EACH WORKING DAY.
- NOTE: CONTRACTOR SHALL MAINTAIN ALL DEVICES AS PROJECT IS BROUGHT UP TO GRADE.
- NOTE: INSTALL MATTING FOR EROSION CONTROL IN ALL PROPOSED DITCH LINES EXCEPT WHERE PERMANENT LINERS ARE SPECIFIED ON THE PLANS OR DIRECTED OTHERWISE BY THE ENGINEER.
- NOTE: UTILIZE FABRIC INSERT INLET PROTECTION DEVICES IN LIEU OF ROCK INLET SEDIMENT TRAPS TYPE-C AS DIRECTED TO AVOID IMPEDIMENT OF RUNOFF IN ROADWAY OPEN TO TRAFFIC.

REVISIONS

8.17.17.99  
 4.7.2022  
 R:\E\2022\Commental\Design\15987A\_EC\_PSH\_058.dgn  
 samuel.skala