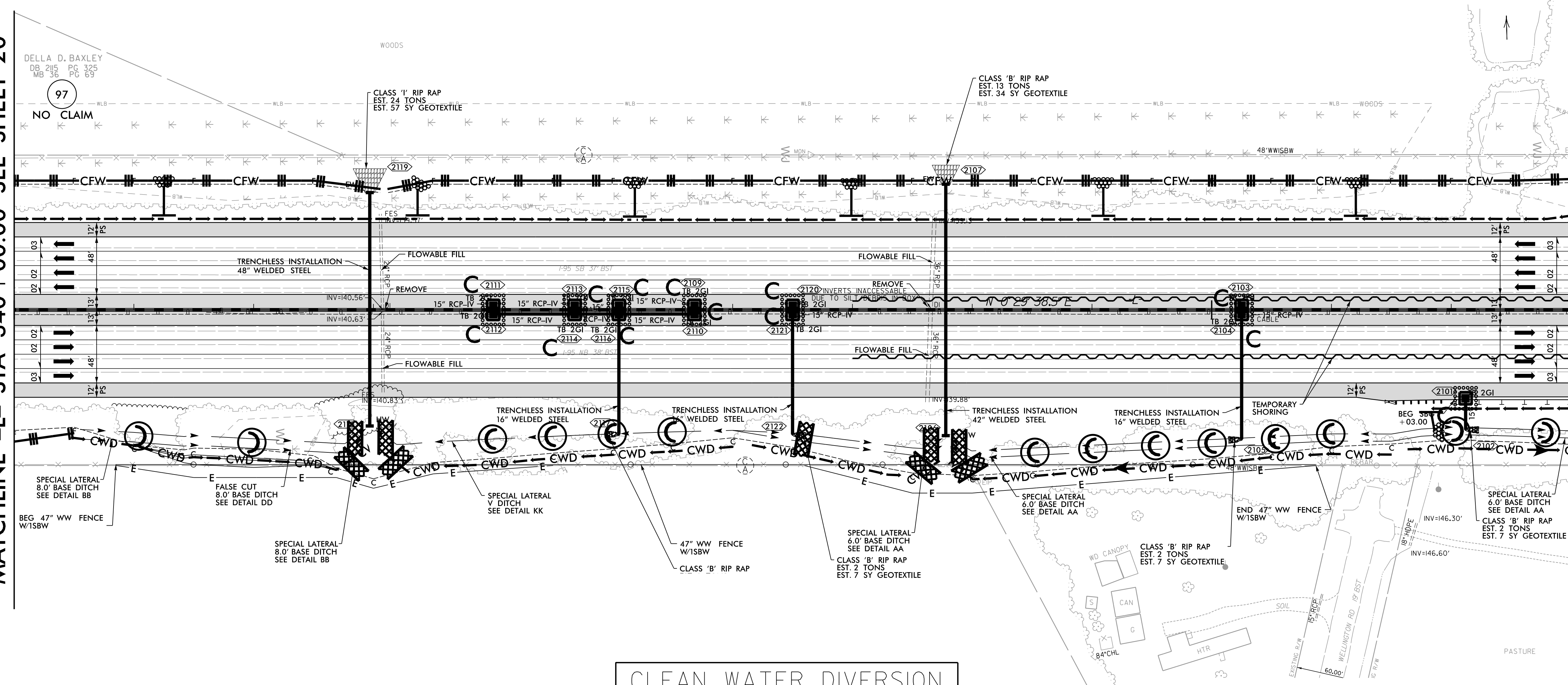


CAROL POWERS LIFE ESTATE
 DB 590 PG 363
 WB 11-E PG 632
 99
 NO CLAIM

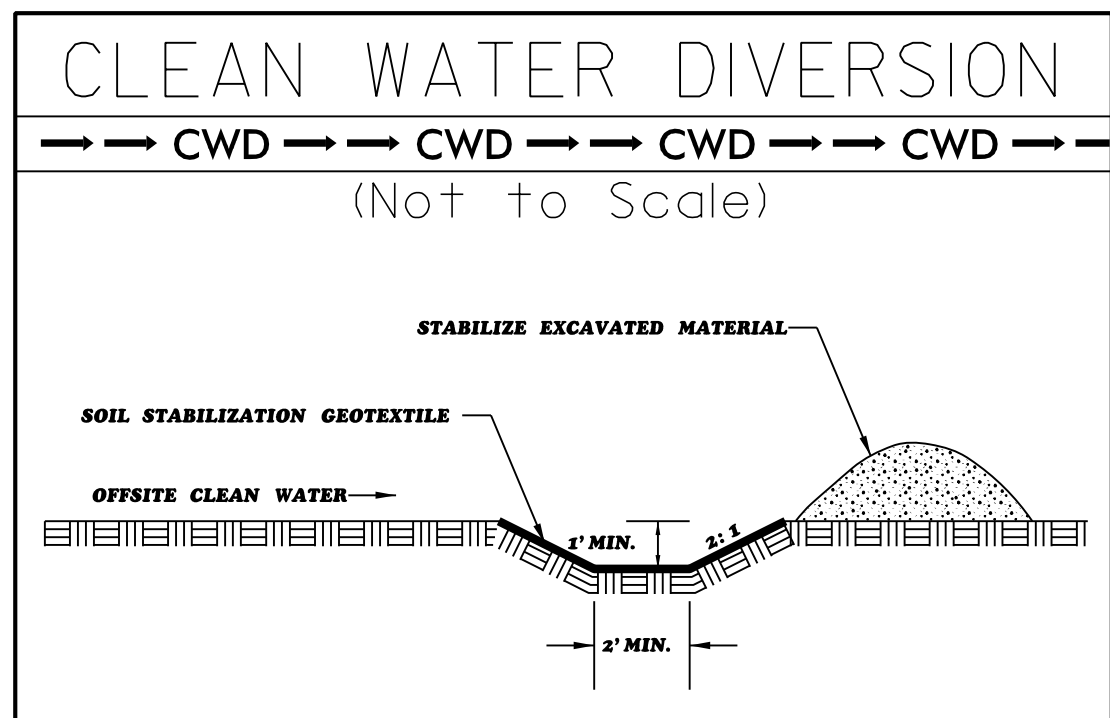
FINAL EROSION CONTROL
 FOR CONSTRUCTION
 SHEET 21

MATCHLINE -L- STA 340 + 00.00 SEE SHEET 20

MATCHLINE -L- STA 353 + 00.00 SEE SHEET 22



- NOTE: ALL EROSION CONTROL DEVICES SHOWN ARE LOCATED WITHIN EXISTING RW OR EASEMENT.
- NOTE: CONTRACTOR SHALL PROVIDE GROUND COVER ON EXPOSED SLOPES IN ACCORDANCE WITH THE "SOIL STABILIZATION TIMEFRAMES"; SEE EC-3.
- NOTE: CONTRACTOR SHALL PROVIDE INLET PROTECTION FOR PARTIALLY INSTALLED STORM DRAINS. THIS MEASURE SHOULD BE INSTALLED AT THE END OF EACH WORKING DAY.
- NOTE: CONTRACTOR SHALL MAINTAIN ALL DEVICES AS PROJECT IS BROUGHT UP TO GRADE.
- NOTE: INSTALL MATTING FOR EROSION CONTROL IN ALL PROPOSED DITCH LINES EXCEPT WHERE PERMANENT LINERS ARE SPECIFIED ON THE PLANS OR DIRECTED OTHERWISE BY THE ENGINEER.
- NOTE: UTILIZE FABRIC INSERT INLET PROTECTION DEVICES IN LIEU OF ROCK INLET SEDIMENT TRAPS TYPE C, AS DIRECTED TO AVOID IMPEDIMENT OF RUNOFF IN ROADWAY OPEN TO TRAFFIC.



FOR -L- PROFILE SEE SHEET 60

REVISIONS

8/17/99
 4/7/2022
 R:\E:\Commentary\Design\15987A_EC_PSH_057.dwg
 samuel.sokalato