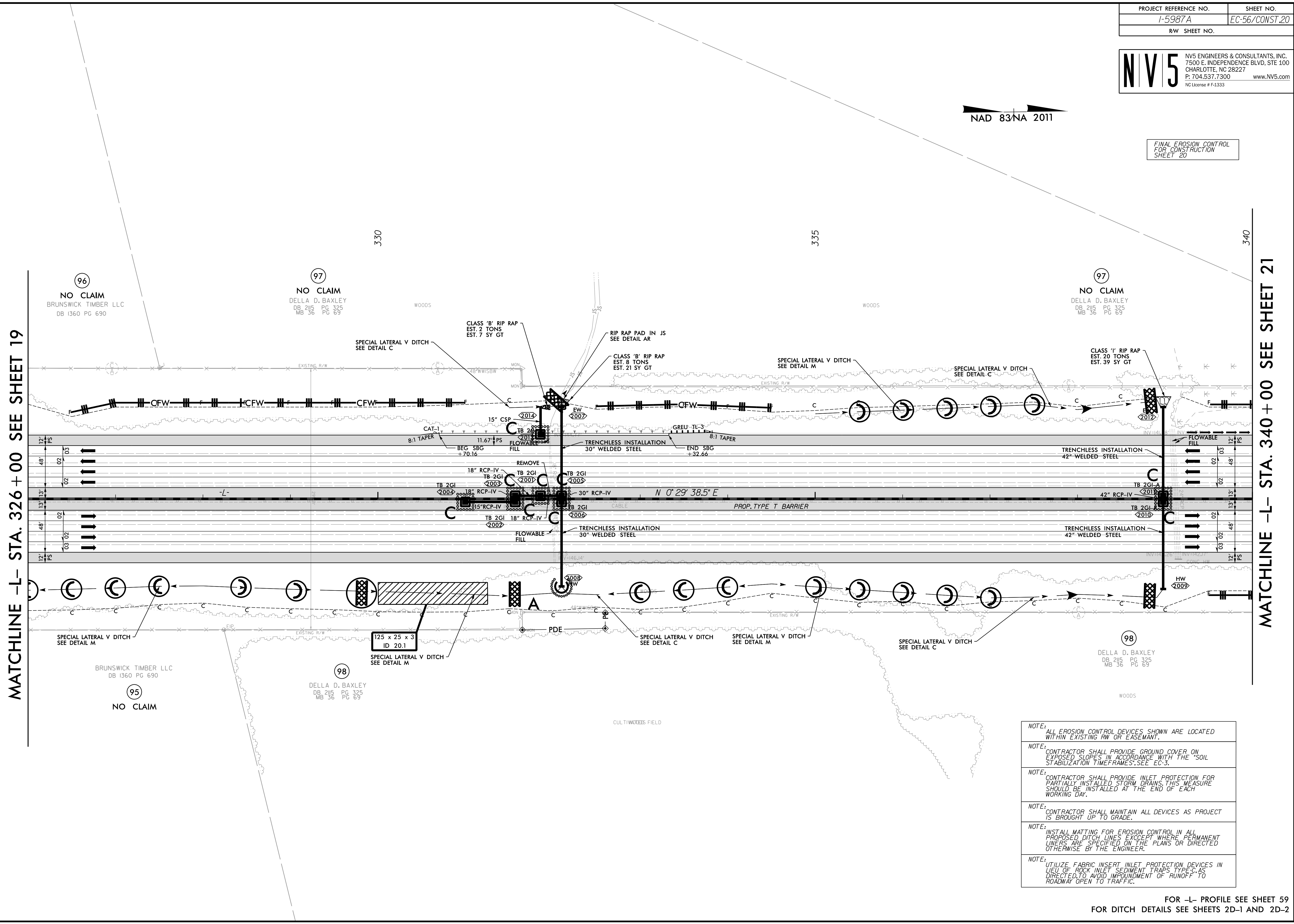


FINAL EROSION CONTROL FOR CONSTRUCTION SHEET 20

MATCHLINE -L- STA. 326 + 00 SEE SHEET 19

MATCHLINE -L- STA. 340 + 00 SEE SHEET 21



REVISIONS

- NOTE: ALL EROSION CONTROL DEVICES SHOWN ARE LOCATED WITHIN EXISTING RW OR EASEMENT.
- NOTE: CONTRACTOR SHALL PROVIDE GROUND COVER ON EXPOSED SLOPES IN ACCORDANCE WITH THE "SOIL STABILIZATION TIMEFRAMES", SEE EC-3.
- NOTE: CONTRACTOR SHALL PROVIDE INLET PROTECTION FOR PARTIALLY INSTALLED STORM DRAINS. THIS MEASURE SHOULD BE INSTALLED AT THE END OF EACH WORKING DAY.
- NOTE: CONTRACTOR SHALL MAINTAIN ALL DEVICES AS PROJECT IS BROUGHT UP TO GRADE.
- NOTE: INSTALL MATTING FOR EROSION CONTROL IN ALL PROPOSED DITCH LINES EXCEPT WHERE PERMANENT LINERS ARE SPECIFIED ON THE PLANS OR DIRECTED OTHERWISE BY THE ENGINEER.
- NOTE: UTILIZE FABRIC INSERT INLET PROTECTION DEVICES IN LIEU OF ROCK INLET SEDIMENT TRAPS TYPE-C, AS DIRECTED TO AVOID IMPEDIMENT OF RUNOFF TO ROADWAY OPEN TO TRAFFIC.

FOR -L- PROFILE SEE SHEET 59
 FOR DITCH DETAILS SEE SHEETS 2D-1 AND 2D-2

4/7/2022 R:\E:\Environmental\Design\15987A_EC_PSH_056.dgn samuel.skala