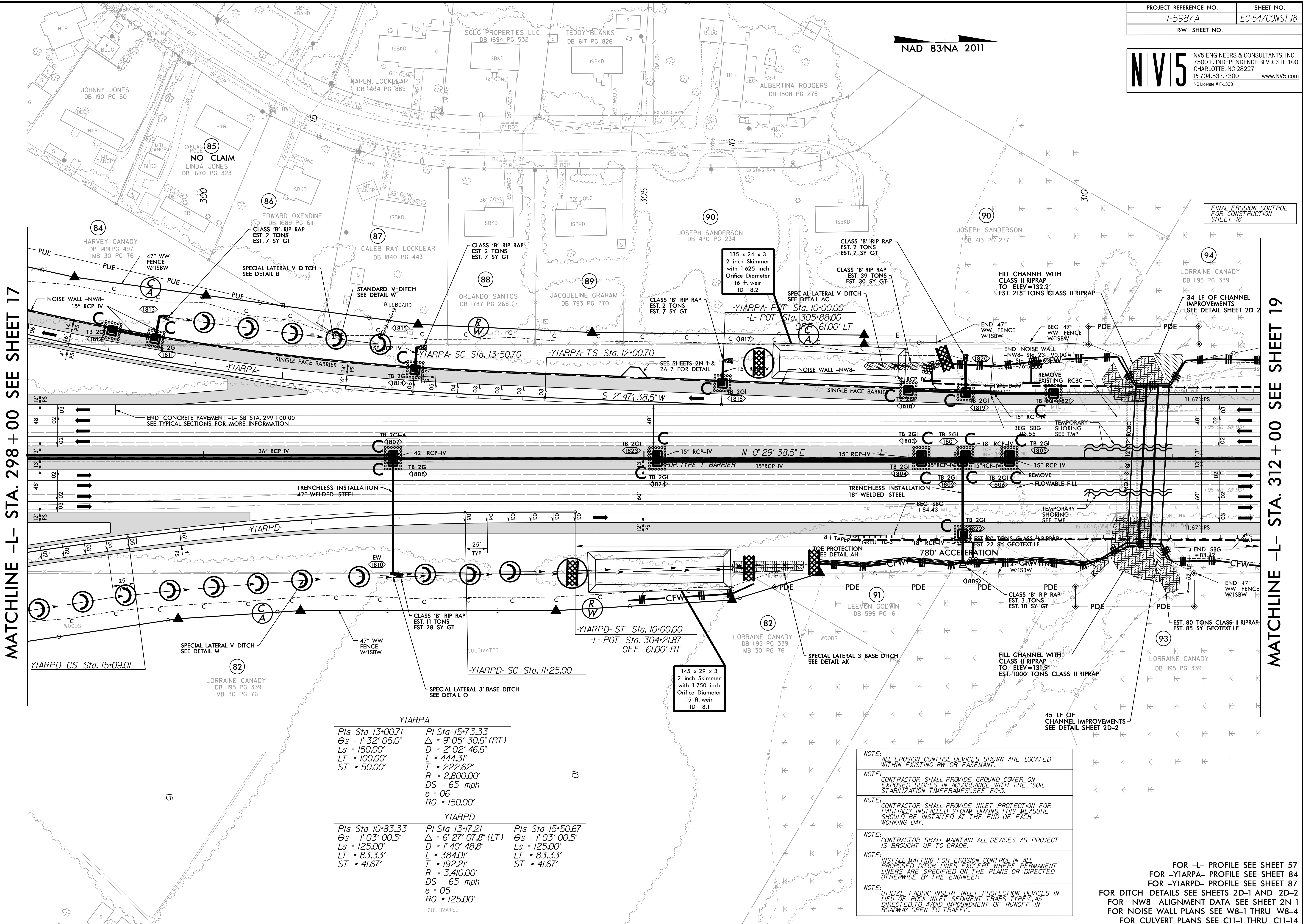


NAD 83/NA 2011



MATCHLINE -L- STA. 298+00 SEE SHEET 17

MATCHLINE -L- STA. 312+00 SEE SHEET 19

-YIARPA-		
PIs Sta 13+00.71	PI Sta 15+73.33	
Os = 1' 32' 05.0"	Δ = 9' 05' 30.6" (RT)	
Ls = 150.00'	D = 2' 02' 46.6"	
LT = 100.00'	L = 444.31'	
ST = 50.00'	T = 222.62'	
	R = 2,800.00'	
	DS = 65 mph	
	e = 06	
	RO = 150.00'	
-YIARPD-		
PIs Sta 10+83.33	PI Sta 13+17.21	PIs Sta 15+50.67
Os = 1' 03' 00.5"	Δ = 6' 27' 07.8" (LT)	Os = 1' 03' 00.5"
Ls = 125.00'	D = 1' 40' 48.8"	Ls = 125.00'
LT = 83.33'	L = 384.01'	LT = 83.33'
ST = 41.67'	T = 192.21'	ST = 41.67'
	R = 3,410.00'	
	DS = 65 mph	
	e = 05	
	RO = 125.00'	
	CULTIVATED	

- NOTE: ALL EROSION CONTROL DEVICES SHOWN ARE LOCATED WITHIN EXISTING RW OR EASEMENT.
- NOTE: CONTRACTOR SHALL PROVIDE GROUND COVER ON EXPOSED SLOPES IN ACCORDANCE WITH THE "SOIL STABILIZATION TIMEFRAMES" SEE EC-3.
- NOTE: CONTRACTOR SHALL PROVIDE INLET PROTECTION FOR PARTIALLY INSTALLED STORM DRAINS. THIS MEASURE SHOULD BE INSTALLED AT THE END OF EACH WORKING DAY.
- NOTE: CONTRACTOR SHALL MAINTAIN ALL DEVICES AS PROJECT IS BROUGHT UP TO GRADE.
- NOTE: INSTALL MATTING FOR EROSION CONTROL IN ALL PROPOSED DITCH LINES EXCEPT WHERE PERMANENT LINERS ARE SPECIFIED ON THE PLANS OR DIRECTED OTHERWISE BY THE ENGINEER.
- NOTE: UTILIZE FABRIC INSERT INLET PROTECTION DEVICES IN LIEU OF ROCK INLET SEDIMENT TRAPS TYPE-C AS DIRECTED TO AVOID IMPOUNDMENT OF RUNOFF IN ROADWAY OPEN TO TRAFFIC.

FOR -L- PROFILE SEE SHEET 57  
 FOR -YIARPA- PROFILE SEE SHEET 84  
 FOR -YIARPD- PROFILE SEE SHEET 87  
 FOR DITCH DETAILS SEE SHEETS 2D-1 AND 2D-2  
 FOR -NW8- ALIGNMENT DATA SEE SHEET 2N-1  
 FOR NOISE WALL PLANS SEE W8-1 THRU W8-4  
 FOR CULVERT PLANS SEE C11-1 THRU C11-14

8/17/2022  
 R:\E\2022\02\01\Design\15987A\_EC\_PSH\_054.dgn  
 samuel.sokolata