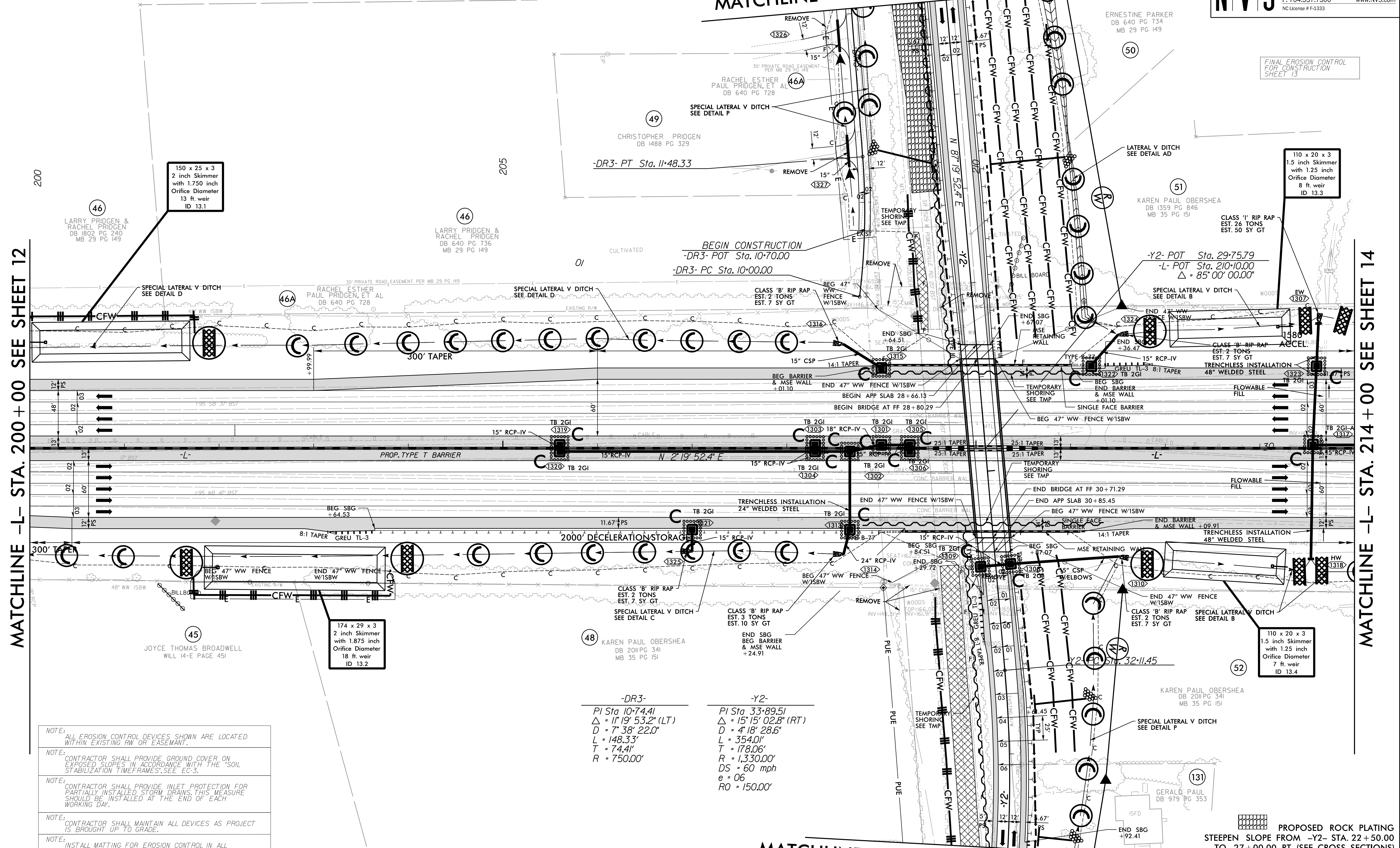


NAD 83/NA 2011

MATCHLINE -Y2- STA. 25+00 SEE SHEET 33

MATCHLINE -L- STA. 200+00 SEE SHEET 12

MATCHLINE -L- STA. 214+00 SEE SHEET 14



- NOTE: ALL EROSION CONTROL DEVICES SHOWN ARE LOCATED WITHIN EXISTING RW OR EASEMENT.
- NOTE: CONTRACTOR SHALL PROVIDE GROUND COVER ON EXPOSED SLOPES IN ACCORDANCE WITH THE "SOIL STABILIZATION TIMEFRAMES," SEE EC-3.
- NOTE: CONTRACTOR SHALL PROVIDE INLET PROTECTION FOR PARTIALLY INSTALLED STORM DRAINS. THIS MEASURE SHOULD BE INSTALLED AT THE END OF EACH WORKING DAY.
- NOTE: CONTRACTOR SHALL MAINTAIN ALL DEVICES AS PROJECT IS BROUGHT UP TO GRADE.
- NOTE: INSTALL MATTING FOR EROSION CONTROL IN ALL PROPOSED DITCH LINES EXCEPT WHERE PERMANENT LINERS ARE SPECIFIED ON THE PLANS OR DIRECTED OTHERWISE BY THE ENGINEER.
- NOTE: UTILIZE FABRIC INSERT INLET PROTECTION DEVICES IN LIEU OF ROCK INLET SEDIMENT TRAPS TYPICAL AS DIRECTED TO AVOID IMPONDMENT OF RUNOFF IN ROADWAY OPEN TO TRAFFIC.

-DR3-	-Y2-
PI Sta 10+74.41	PI Sta 33+89.51
$\Delta = 11' 19'' 53.2''$ (LT)	$\Delta = 15' 15'' 02.8''$ (RT)
D = 7' 38' 22.0"	D = 4' 18' 28.6"
L = 148.33'	L = 354.01'
T = 74.41'	T = 178.06'
R = 750.00'	R = 1,330.00'
	DS = 60 mph
	e = 06
	RO = 150.00'

MATCHLINE -Y2- STA. 34+00 SEE SHEET 34

FOR WALL PLANS SEE W-1 THRU W-11  
 FOR STRUCTURE PLANS SEE S1-1 THRU S1-36

PROPOSED ROCK PLATING  
 STEEPEN SLOPE FROM -Y2- STA. 22+50.00  
 TO 27+00.00 RT. (SEE CROSS SECTIONS)  
 SEE DETAIL SHEET 2C-13 FOR ROCK PLATING

PROPOSED PAVEMENT REMOVAL  
 FOR -L- PROFILE SEE SHEET 50  
 FOR -Y2- PROFILE SEE SHEET 72  
 FOR DITCH DETAILS SEE SHEETS 2D-1 AND 2D-2

8/17/2022  
 R:\E:\C:\Orion\Orion\Design\15987A\_EC\_PSH\_049.dgn  
 samuel.skalata