

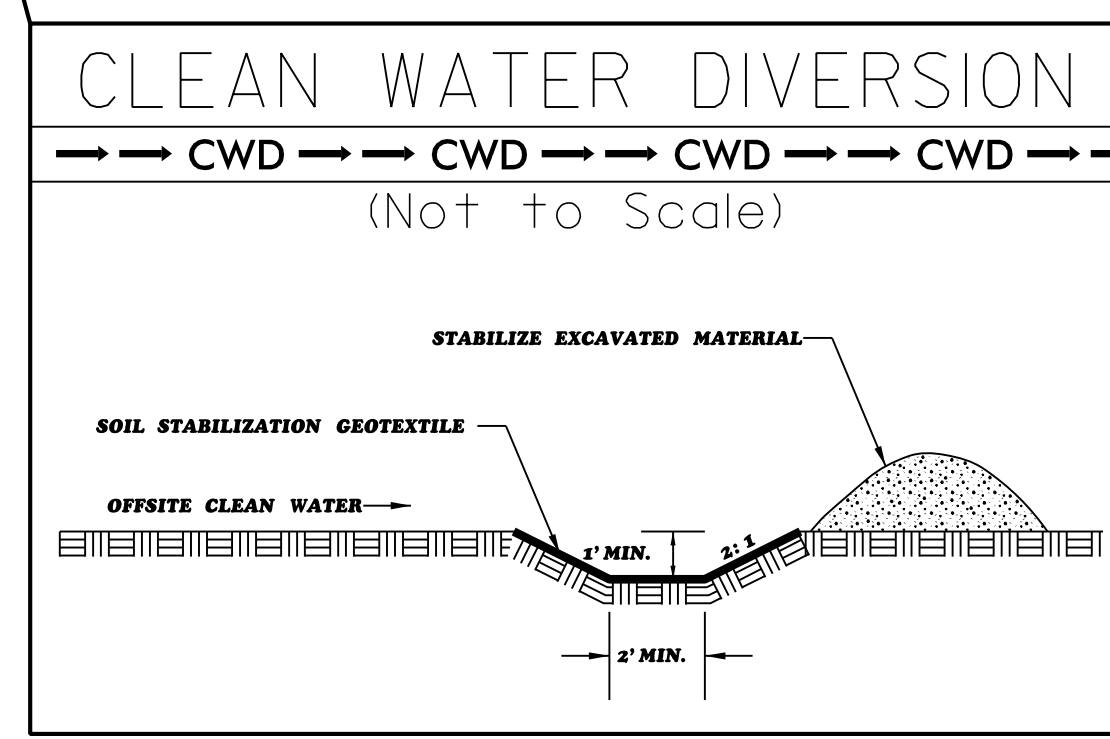
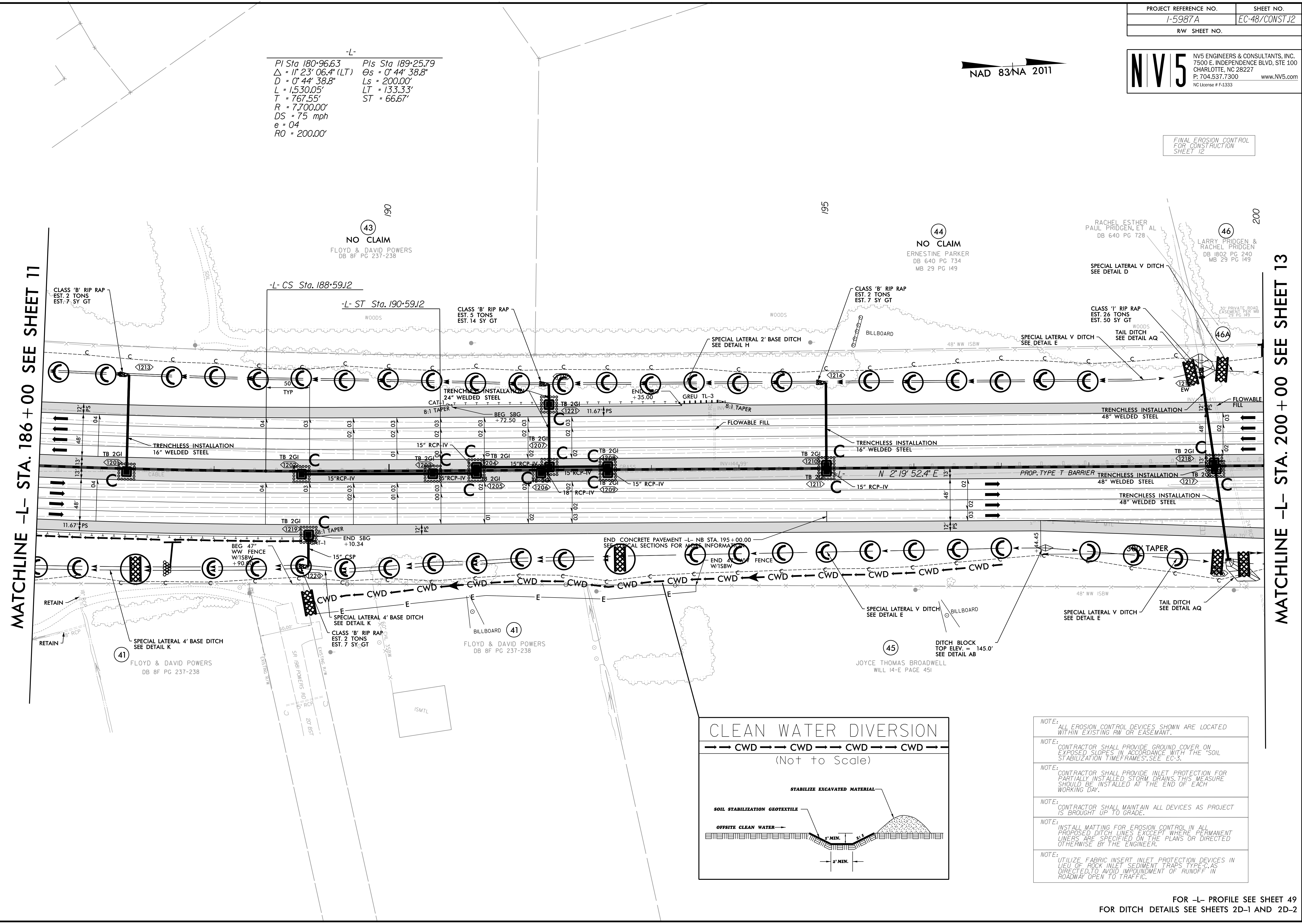
NAD 83/NA 2011

-L-  
 Pls Sta 180+96.63 Pls Sta 189+25.79  
 $\Delta = 17' 23" 06.4" (LT)$   $\Theta_s = 0' 44" 38.8"$   
 $D = 0' 44" 38.8"$   $L_s = 200.00'$   
 $L = 1,530.05'$   $LT = 133.33'$   
 $T = 767.55'$   $ST = 66.67'$   
 $R = 7,700.00'$   
 $DS = 75 \text{ mph}$   
 $e = 04$   
 $RO = 200.00'$

FINAL EROSION CONTROL FOR CONSTRUCTION SHEET 12

MATCHLINE -L- STA. 186+00 SEE SHEET 11

MATCHLINE -L- STA. 200+00 SEE SHEET 13



- NOTE: ALL EROSION CONTROL DEVICES SHOWN ARE LOCATED WITHIN EXISTING RW OR EASEMENT.
- NOTE: CONTRACTOR SHALL PROVIDE GROUND COVER ON EXPOSED SLOPES IN ACCORDANCE WITH THE "SOIL STABILIZATION TIMEFRAMES," SEE EC-3.
- NOTE: CONTRACTOR SHALL PROVIDE INLET PROTECTION FOR PARTIALLY INSTALLED STORM DRAINS. THIS MEASURE SHOULD BE INSTALLED AT THE END OF EACH WORKING DAY.
- NOTE: CONTRACTOR SHALL MAINTAIN ALL DEVICES AS PROJECT IS BROUGHT UP TO GRADE.
- NOTE: INSTALL MATTING FOR EROSION CONTROL IN ALL PROPOSED DITCH LINES EXCEPT WHERE PERMANENT LINERS ARE SPECIFIED ON THE PLANS OR DIRECTED OTHERWISE BY THE ENGINEER.
- NOTE: UTILIZE FABRIC INSERT INLET PROTECTION DEVICES IN LIEU OF ROCK INLET SEDIMENT TRAPS TYPE-C AS DIRECTED TO AVOID IMPOUNDMENT OF "RUNOFF" IN ROADWAY OPEN TO TRAFFIC.

FOR -L- PROFILE SEE SHEET 49  
 FOR DITCH DETAILS SEE SHEETS 2D-1 AND 2D-2

8/17/99  
 4/7/2022  
 R:\E:\environmental\Design\15987A\_EC\_PSH\_048.dgn  
 samuel.skalata