

- NOTE: ALL EROSION CONTROL DEVICES SHOWN ARE LOCATED WITHIN EXISTING RW OR EASEMENT.
- NOTE: CONTRACTOR SHALL PROVIDE GROUND COVER ON EXPOSED SLOPES IN ACCORDANCE WITH THE "SOIL STABILIZATION TIMEFRAMES", SEE EC-3.
- NOTE: CONTRACTOR SHALL PROVIDE INLET PROTECTION FOR PARTIALLY INSTALLED STORM DRAINS. THIS MEASURE SHOULD BE INSTALLED AT THE END OF EACH WORKING DAY.
- NOTE: CONTRACTOR SHALL MAINTAIN ALL DEVICES AS PROJECT IS BROUGHT UP TO GRADE.
- NOTE: INSTALL MATTING FOR EROSION CONTROL IN ALL PROPOSED DITCH LINES EXCEPT WHERE PERMANENT LINERS ARE SPECIFIED ON THE PLANS OR DIRECTED OTHERWISE BY THE ENGINEER.
- NOTE: UTILIZE FABRIC INSERT INLET PROTECTION DEVICES IN LIEU OF ROCK INLET SEDIMENT TRAPS TYPE C AS DIRECTED TO AVOID IMPROVEMENT OF RUNOFF IN ROADWAY OPEN TO TRAFFIC.

-L-
 Pls Sta 172+62.41
 $\Theta_s = 0' 44' 38.8"$
 $L_s = 200.00'$
 $LT = 133.33'$
 $ST = 66.67'$

40
 NO CLAIM
 PAM PETTY
 WILL 18-E PG 590
 MB 33 PG 70

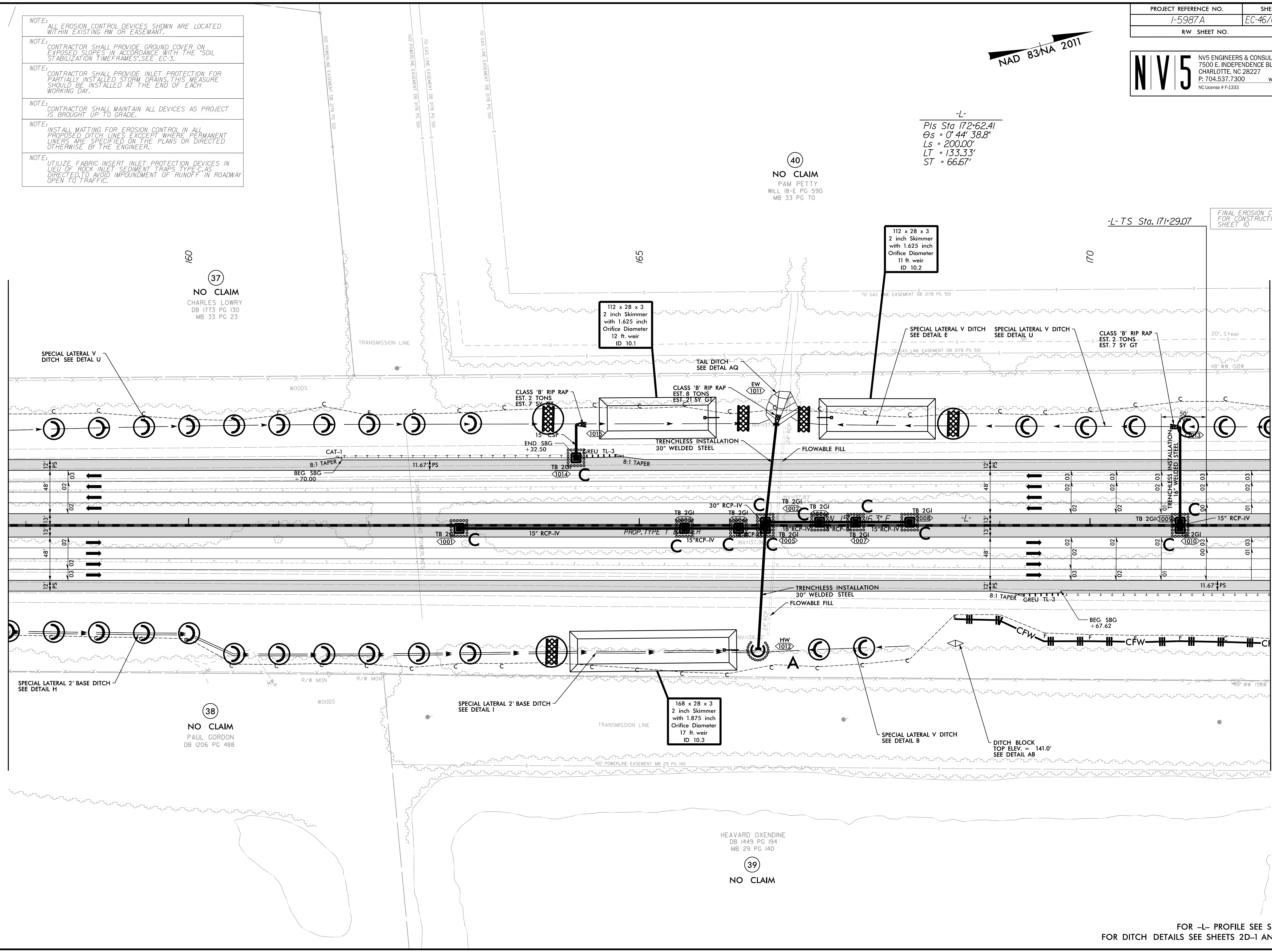
37
 NO CLAIM
 CHARLES LOWRY
 DB 1773 PG 130
 MB 33 PG 23

38
 NO CLAIM
 PAUL GORDON
 DB 1206 PG 488

39
 NO CLAIM
 HEAVARD OXENDINE
 DB 1449 PG 194
 MB 29 PG 140

MATCHLINE -L- STA. 158+00 SEE SHEET 9

MATCHLINE -L- STA. 172+00 SEE SHEET 11



FINAL EROSION CONTROL FOR CONSTRUCTION SHEET 10

REVISIONS

8/17/99
 4/7/2022
 R:\E\Commental\Design\15987A_EC_PSH_046.dwg
 samuel.skalata