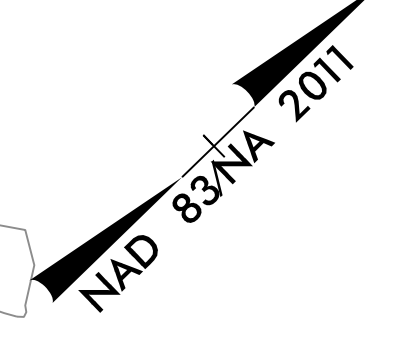
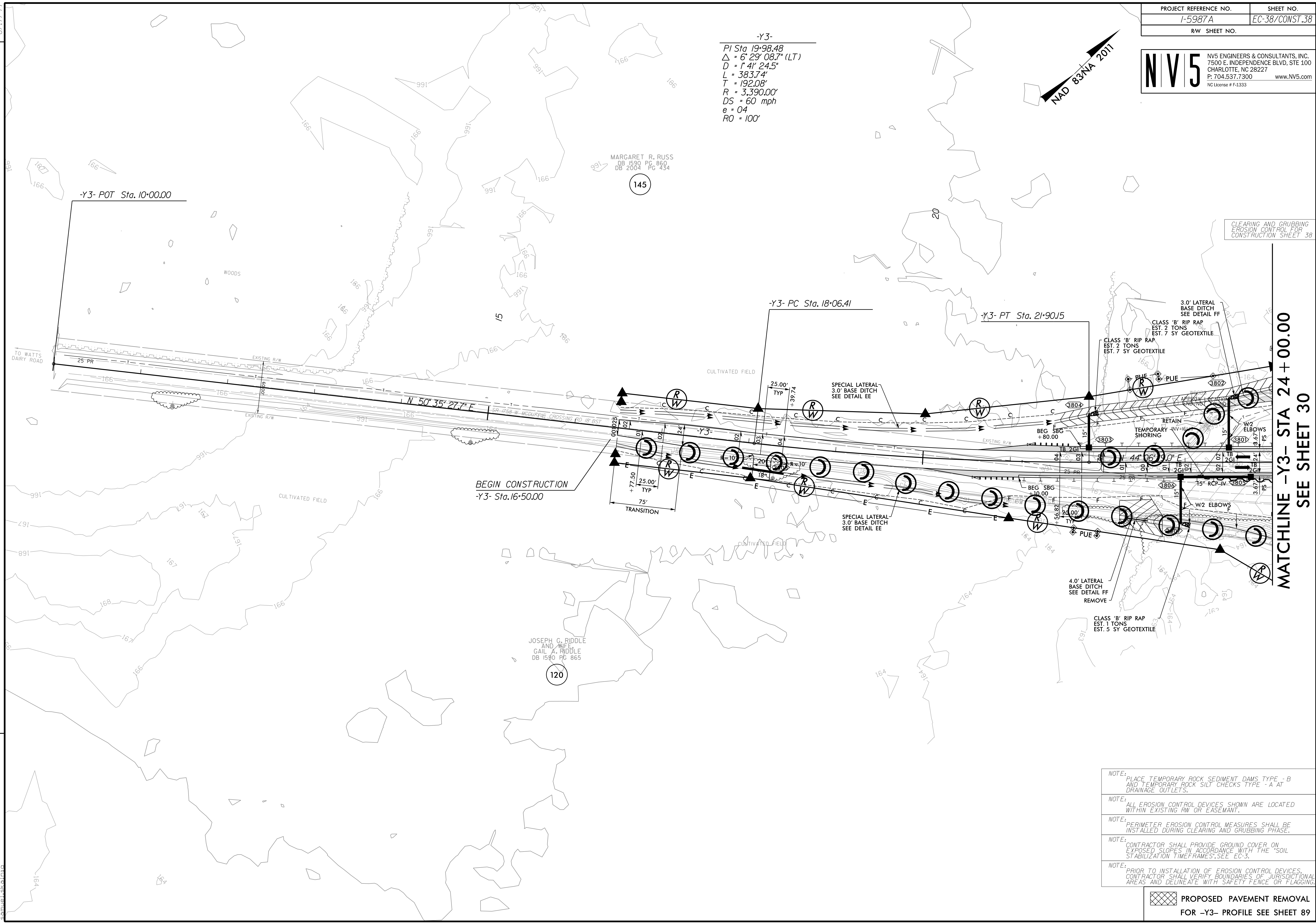


-Y3-  
 PI Sta 19+98.48  
 $\Delta = 6' 29'' 08.7'' (LT)$   
 $D = 1' 41'' 24.5''$   
 $L = 383.74'$   
 $T = 192.08'$   
 $R = 3,390.00'$   
 $DS = 60 \text{ mph}$   
 $e = 0.4$   
 $RO = 100'$



CLEARING AND GRUBBING  
 EROSION CONTROL FOR  
 CONSTRUCTION SHEET 38

MATCHLINE -Y3- STA 24+00.00  
 SEE SHEET 30



REVISIONS

4/7/2022  
 R:\E\Environmental\Design\15987A\_EC\_PSH\_038.dwg  
 samuel.skalata

- NOTE: PLACE TEMPORARY ROCK SEDIMENT DAMS TYPE - B AND TEMPORARY ROCK SILT CHECKS TYPE - A AT DRAINAGE OUTLETS.
- NOTE: ALL EROSION CONTROL DEVICES SHOWN ARE LOCATED WITHIN EXISTING RW OR EASEMENT.
- NOTE: PERIMETER EROSION CONTROL MEASURES SHALL BE INSTALLED DURING CLEARING AND GRUBBING PHASE.
- NOTE: CONTRACTOR SHALL PROVIDE GROUND COVER ON EXPOSED SLOPES IN ACCORDANCE WITH THE "SOIL STABILIZATION TIMEFRAMES" SEE EC-3.
- NOTE: PRIOR TO INSTALLATION OF EROSION CONTROL DEVICES, CONTRACTOR SHALL VERIFY BOUNDARIES OF JURISDICTIONAL AREAS AND DELINEATE WITH SAFETY FENCE OR FLAGGING.

PROPOSED PAVEMENT REMOVAL  
 FOR -Y3- PROFILE SEE SHEET 89