

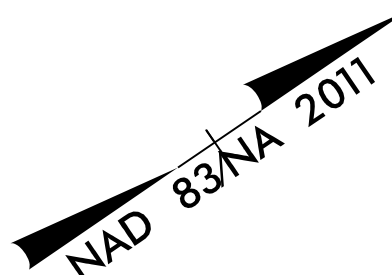
NOTE: PLACE TEMPORARY ROCK SEDIMENT DAMS TYPE - B AND TEMPORARY ROCK SILT CHECKS TYPE - A AT DRAINAGE OUTLETS.

NOTE: ALL EROSION CONTROL DEVICES SHOWN ARE LOCATED WITHIN EXISTING RW OR EASEMENT.

NOTE: PERIMETER EROSION CONTROL MEASURES SHALL BE INSTALLED DURING CLEARING AND GRUBBING PHASE.

NOTE: CONTRACTOR SHALL PROVIDE GROUND COVER ON EXPOSED SLOPES IN ACCORDANCE WITH THE "SOIL STABILIZATION TIMEFRAMES", SEE EC-3.

NOTE: PRIOR TO INSTALLATION OF EROSION CONTROL DEVICES, CONTRACTOR SHALL VERIFY BOUNDARIES OF JURISDICTIONAL AREAS AND DELINEATE WITH SAFETY FENCE OR FLAGGING.



MATCHLINE -YIA- STA. 49 + 00 SEE SHEET 17

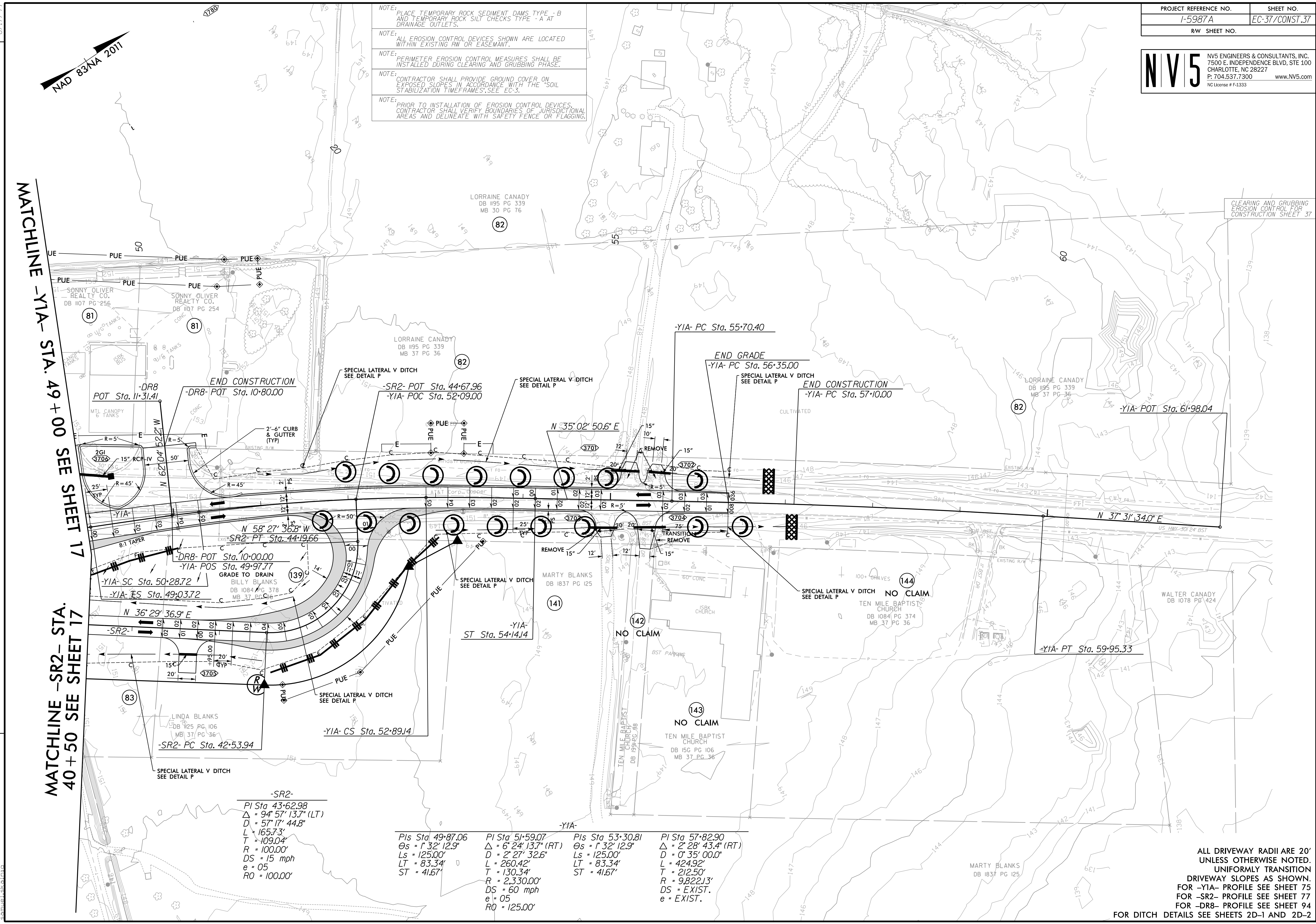
MATCHLINE -SR2- STA. 41 + 50 SEE SHEET 17

REVISIONS

ROW REVISION - 10/22/2021 - CHANGED PARCEL 138 TO B1 PARCEL 138 IS REMOVED (NOT USED) - CDA

ROW REVISION - 10/22/2021 - CHANGED PARCEL 140 TO B2 PARCEL 140 IS REMOVED (NOT USED) - CDA

ROW REVISION - 10/22/2021 - MODIFIED PUE ON PARCEL 81 AND PARCEL 82 - CDA



-SR2-  
 PI Sta 43+62.98  
 $\Delta = 94^{\circ} 57' 13.7" (LT)$   
 $D = 57^{\circ} 17' 44.8"$   
 $L = 165.73'$   
 $T = 109.04'$   
 $R = 100.00'$   
 $DS = 15 \text{ mph}$   
 $e = 05$   
 $RO = 100.00'$

PIs Sta 49+87.06  
 $\Delta = 1^{\circ} 32' 12.9"$   
 $Ls = 125.00'$   
 $LT = 83.34'$   
 $ST = 41.67'$

PI Sta 51+59.07  
 $\Delta = 6^{\circ} 24' 13.7" (RT)$   
 $D = 2^{\circ} 27' 32.6"$   
 $L = 260.42'$   
 $T = 130.34'$   
 $R = 2,330.00'$   
 $DS = 60 \text{ mph}$   
 $e = 05$   
 $RO = 125.00'$

PIs Sta 53+30.81  
 $\Delta = 1^{\circ} 32' 12.9"$   
 $Ls = 125.00'$   
 $LT = 83.34'$   
 $ST = 41.67'$

PI Sta 57+82.90  
 $\Delta = 2^{\circ} 28' 43.4" (RT)$   
 $D = 0^{\circ} 35' 00.0"$   
 $L = 424.92'$   
 $T = 212.50'$   
 $R = 9,822.13'$   
 $DS = EXIST.$   
 $e = EXIST.$

ALL DRIVEWAY RADII ARE 20'  
 UNLESS OTHERWISE NOTED.  
 UNIFORMLY TRANSITION  
 DRIVEWAY SLOPES AS SHOWN.  
 FOR -YIA- PROFILE SEE SHEET 75  
 FOR -SR2- PROFILE SEE SHEET 77  
 FOR -DR8- PROFILE SEE SHEET 94  
 FOR DITCH DETAILS SEE SHEETS 2D-1 AND 2D-2