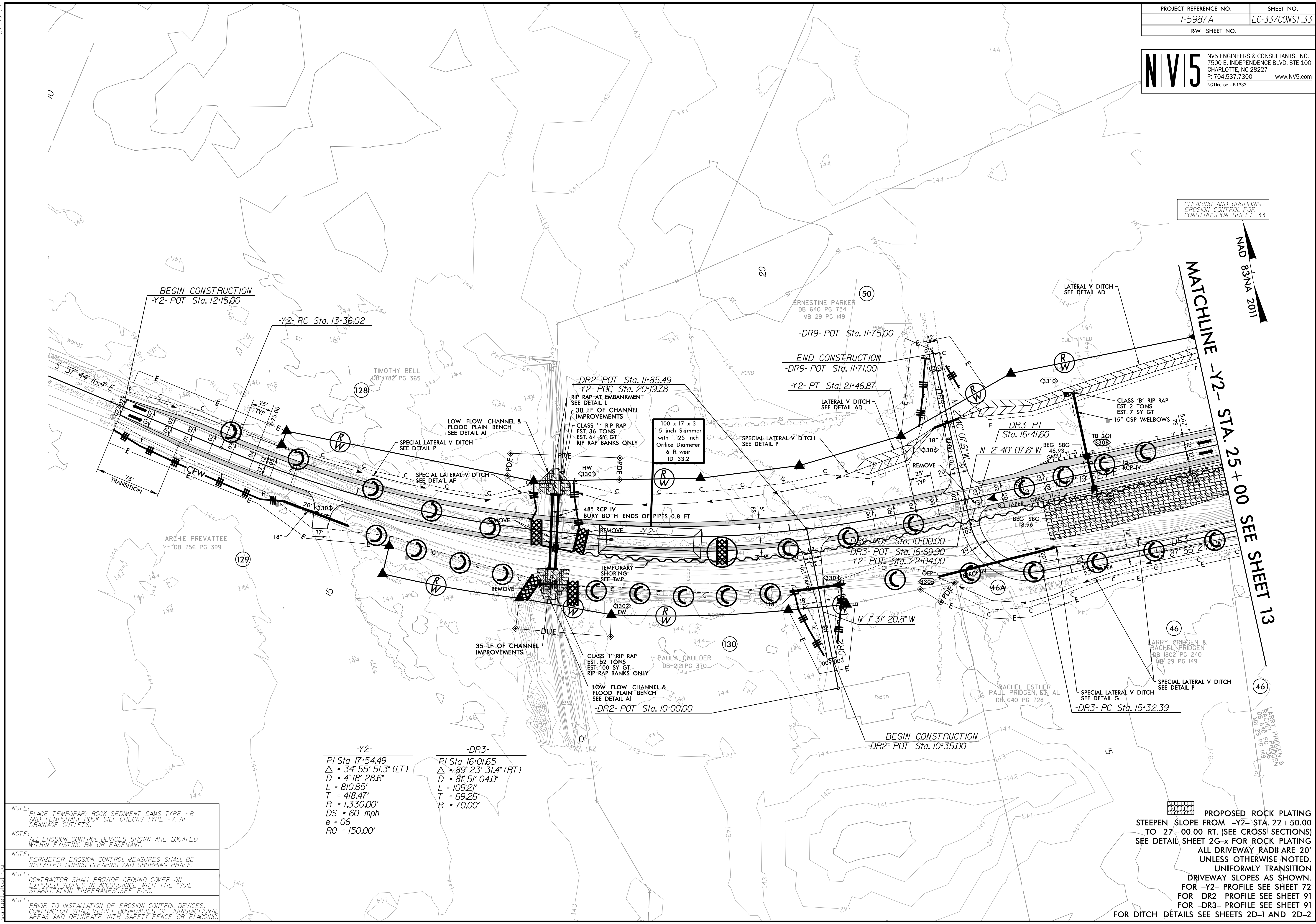


CLEARING AND GRUBBING
 EROSION CONTROL FOR
 CONSTRUCTION SHEET 33

NAD 83/NA 2011



-Y2-	-DR3-
PI Sta 17+54.49	PI Sta 16+01.65
$\Delta = 34^{\circ} 55' 51.3''$ (LT)	$\Delta = 89^{\circ} 23' 31.4''$ (RT)
D = 4' 18" 28.6"	D = 8' 51" 04.0"
L = 810.85'	L = 109.21'
T = 418.47'	T = 69.26'
R = 1,330.00'	R = 70.00'
DS = 60 mph	
e = 06	
RO = 150.00'	

- NOTE: PLACE TEMPORARY ROCK SEDIMENT DAMS TYPE -B AND TEMPORARY ROCK SILT CHECKS TYPE -A AT DRAINAGE OUTLETS.
- NOTE: ALL EROSION CONTROL DEVICES SHOWN ARE LOCATED WITHIN EXISTING RW OR EASEMENT.
- NOTE: PERIMETER EROSION CONTROL MEASURES SHALL BE INSTALLED DURING CLEARING AND GRUBBING PHASE.
- NOTE: CONTRACTOR SHALL PROVIDE GROUND COVER ON EXPOSED SLOPES IN ACCORDANCE WITH THE "SOIL STABILIZATION TIMEFRAMES," SEE EC-3.
- NOTE: PRIOR TO INSTALLATION OF EROSION CONTROL DEVICES, CONTRACTOR SHALL VERIFY BOUNDARIES OF JURISDICTIONAL AREAS AND DELINEATE WITH SAFETY FENCE OR FLAGGING.

PROPOSED ROCK PLATING
 STEEPEN SLOPE FROM -Y2- STA. 22+50.00
 TO 27+00.00 FT. (SEE CROSS SECTIONS)
 SEE DETAIL SHEET 2G-x FOR ROCK PLATING
 ALL DRIVEWAY RADII ARE 20'
 UNLESS OTHERWISE NOTED.
 UNIFORMLY TRANSITION
 DRIVEWAY SLOPES AS SHOWN.
 FOR -Y2- PROFILE SEE SHEET 72
 FOR -DR2- PROFILE SEE SHEET 91
 FOR -DR3- PROFILE SEE SHEET 91
 FOR DITCH DETAILS SEE SHEETS 2D-1 AND 2D-2

8/17/99
 R:\E:\Environmental\Design\15987A_EC_PSH_033.dgn
 samuel.skidmore