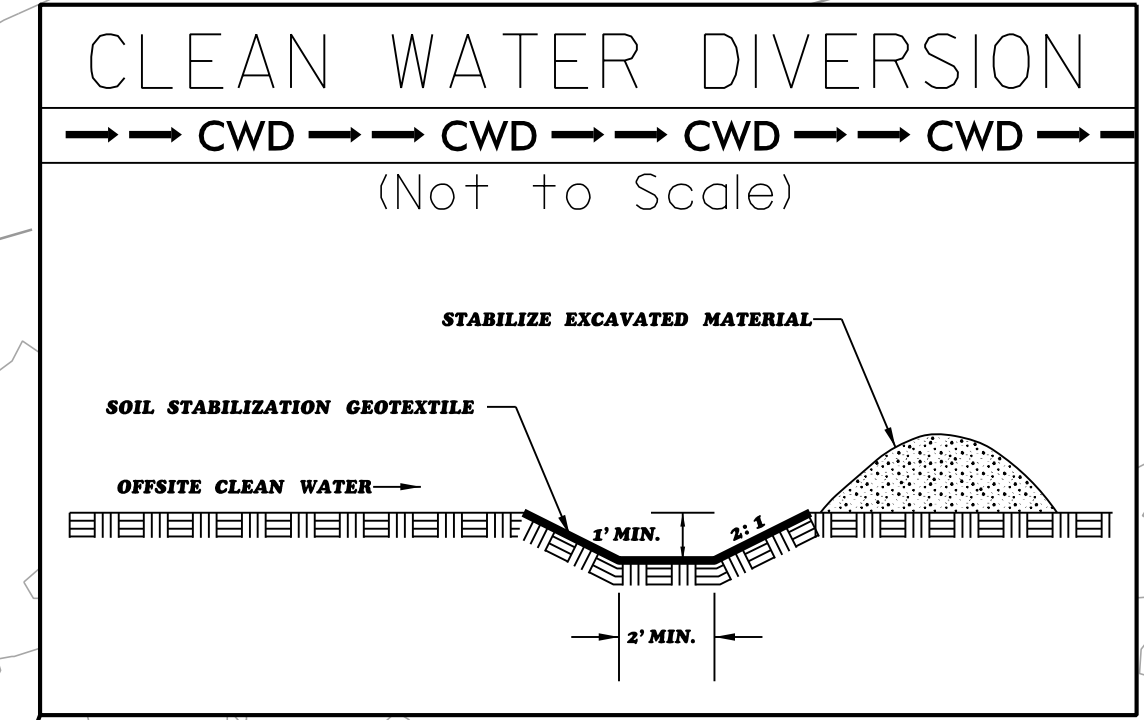


NAD 83/NA 2011

CLEARING AND GRUBBING
 EROSION CONTROL FOR
 CONSTRUCTION SHEET 27

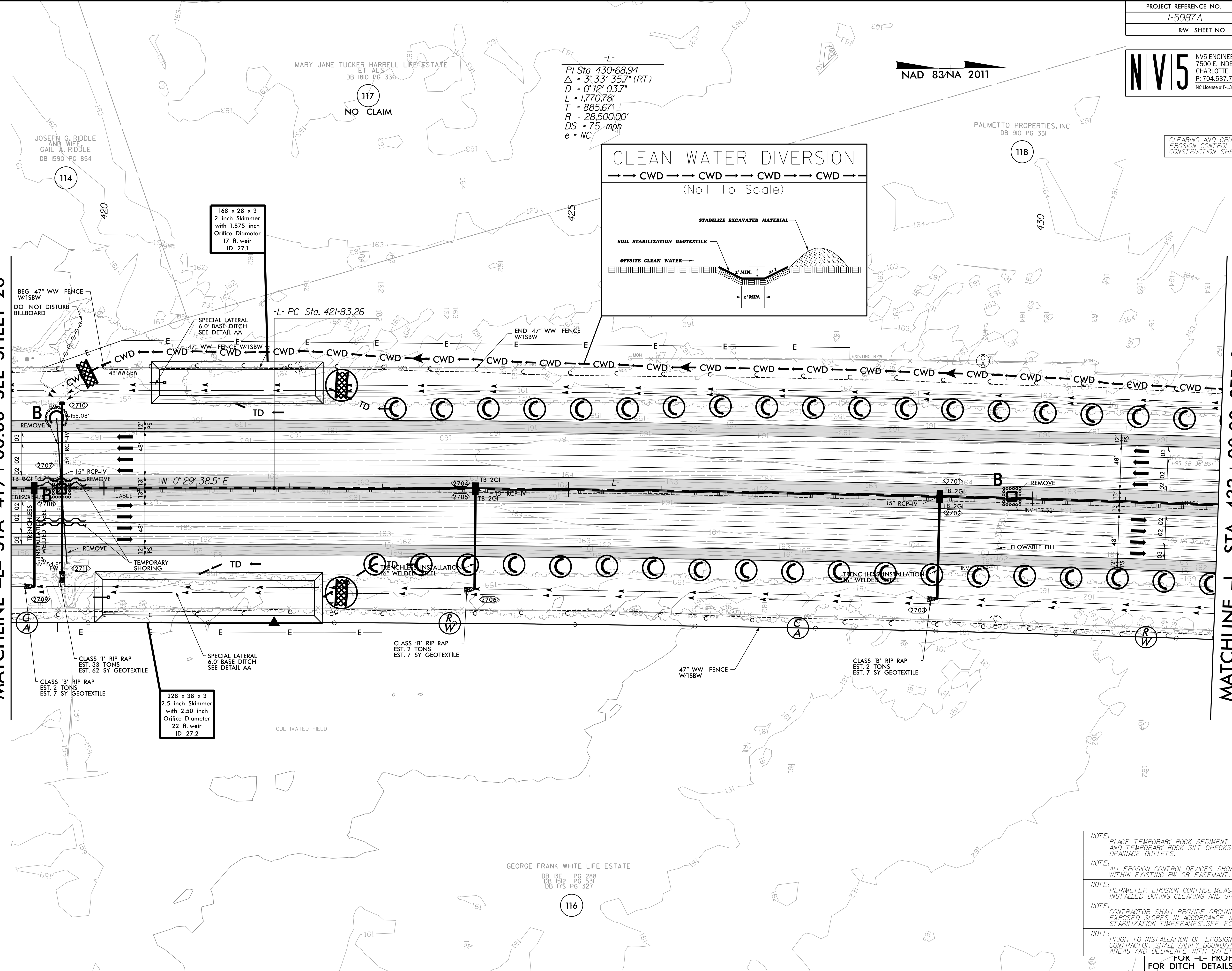
-L-
 PI Sta 430+68.94
 $\Delta = 3^{\circ} 33' 35.7" (RT)$
 $D = 0^{\circ} 12' 03.7"$
 $L = 1,770.78'$
 $T = 885.67'$
 $R = 28,500.00'$
 $DS = 75 \text{ mph}$
 $e = NC$



MATCHLINE -L- STA 419 + 00.00 SEE SHEET 26

MATCHLINE -L- STA 432 + 00.00 SEE SHEET 28

REVISIONS



- NOTE: PLACE TEMPORARY ROCK SEDIMENT DAMS TYPE - B AND TEMPORARY ROCK SILT CHECKS TYPE - A AT DRAINAGE OUTLETS.
- NOTE: ALL EROSION CONTROL DEVICES SHOWN ARE LOCATED WITHIN EXISTING RW OR EASEMENT.
- NOTE: PERIMETER EROSION CONTROL MEASURES SHALL BE INSTALLED DURING CLEARING AND GRUBBING PHASE.
- NOTE: CONTRACTOR SHALL PROVIDE GROUND COVER ON EXPOSED SLOPES IN ACCORDANCE WITH THE "SOIL STABILIZATION TIMEFRAMES"; SEE EC-3.
- NOTE: PRIOR TO INSTALLATION OF EROSION CONTROL DEVICES, CONTRACTOR SHALL VERIFY BOUNDARIES OF JURISDICTIONAL AREAS AND DELINEATE WITH SAFETY FENCE OR FLAGGING.

FOR -L- PROFILE SEE SHEET 60
 FOR DITCH DETAILS SEE SHEET 2D-3

8/17/99

A:\E\2022\Comments\Design\I5987A_EC_PSH_027.dwg
 8/17/2022
 R:\E\2022\Comments\Design\I5987A_EC_PSH_027.dwg