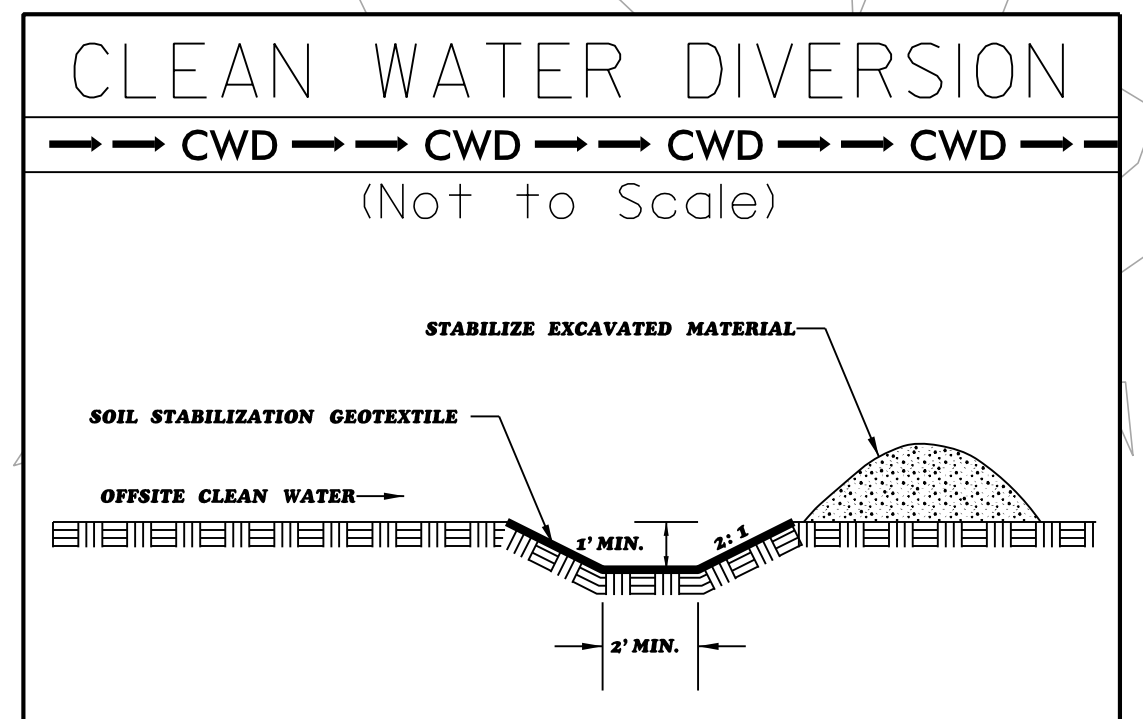
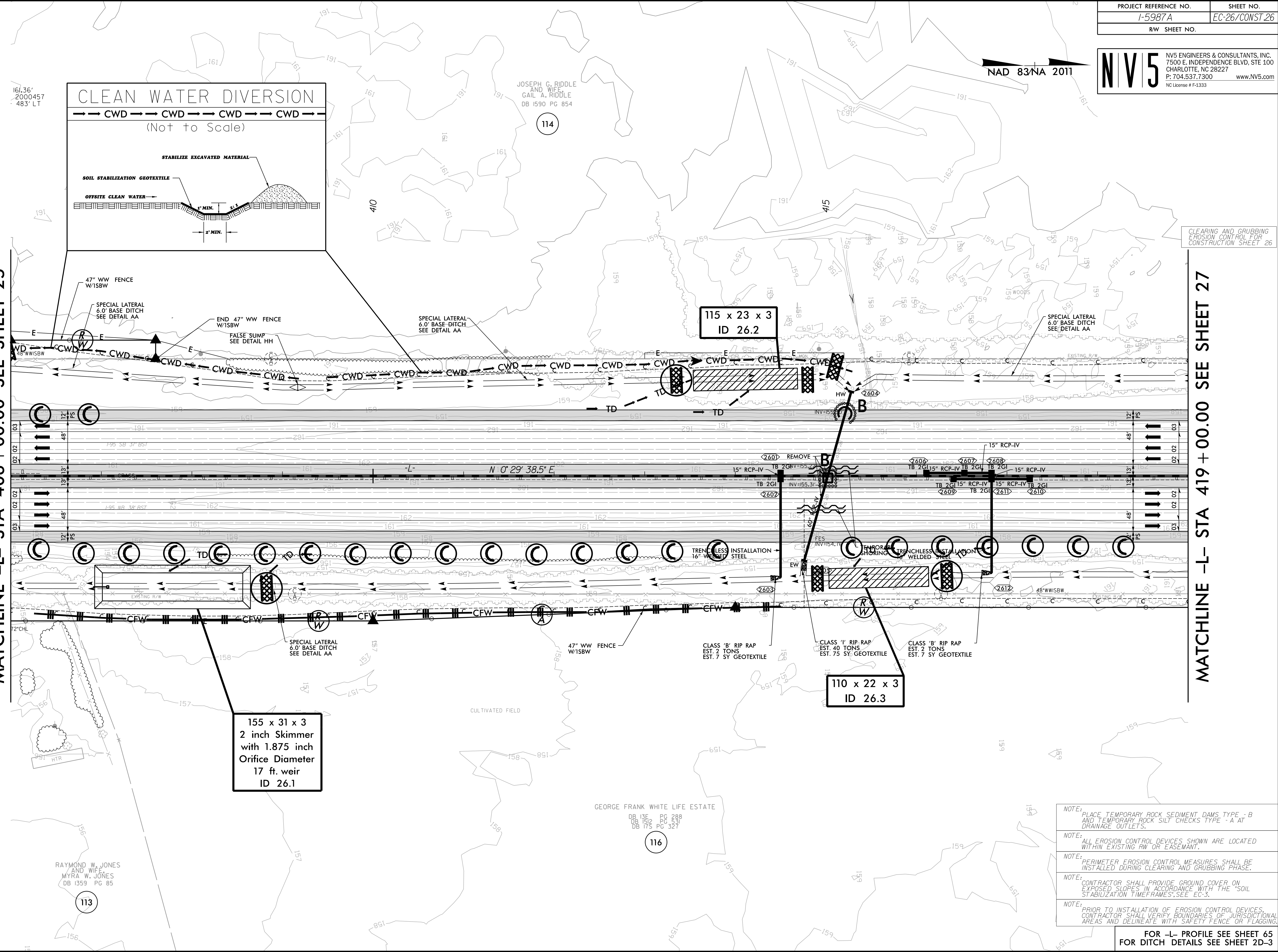


NAD 83/NA 2011



MATCHLINE -L- STA 406 + 00.00 SEE SHEET 25

MATCHLINE -L- STA 419 + 00.00 SEE SHEET 27



REVISIONS ROW REVISION - 10/22/2021 - REVISED PROPERTY LINES TO SHOW PARCEL I16, REMOVED PARCEL NUMBER I15 (NOT USED)

8/17/99
 161.36' 2000457 483' LT
 4/7/2022
 R:\E\Comments\Design\I5987A_EC_PSH_026.dwg
 some1\skidmore

CLEARING AND GRUBBING EROSION CONTROL FOR CONSTRUCTION SHEET 26

- NOTE: PLACE TEMPORARY ROCK SEDIMENT DAMS TYPE - B AND TEMPORARY ROCK SILT CHECKS TYPE - A AT DRAINAGE OUTLETS.
- NOTE: ALL EROSION CONTROL DEVICES SHOWN ARE LOCATED WITHIN EXISTING RW OR EASEMENT.
- NOTE: PERIMETER EROSION CONTROL MEASURES SHALL BE INSTALLED DURING CLEARING AND GRUBBING PHASE.
- NOTE: CONTRACTOR SHALL PROVIDE GROUND COVER ON EXPOSED SLOPES IN ACCORDANCE WITH THE "SOIL STABILIZATION TIMEFRAMES"; SEE EC-3.
- NOTE: PRIOR TO INSTALLATION OF EROSION CONTROL DEVICES, CONTRACTOR SHALL VERIFY BOUNDARIES OF JURISDICTIONAL AREAS AND DELINEATE WITH SAFETY FENCE OR FLAGGING.

FOR -L- PROFILE SEE SHEET 65
 FOR DITCH DETAILS SEE SHEET 2D-3