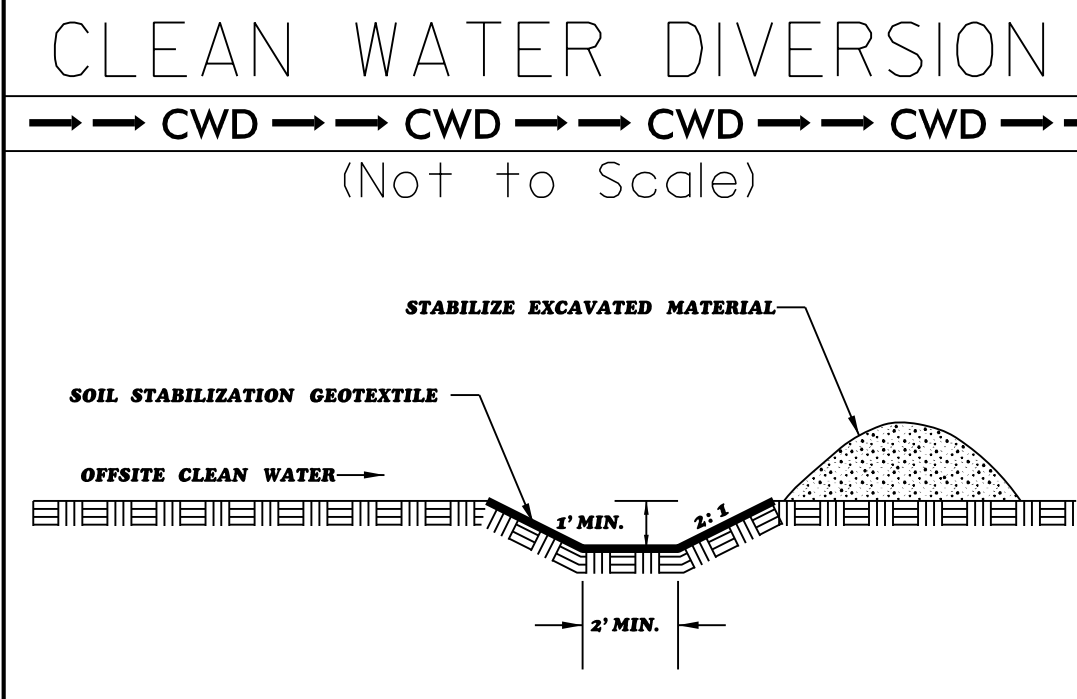


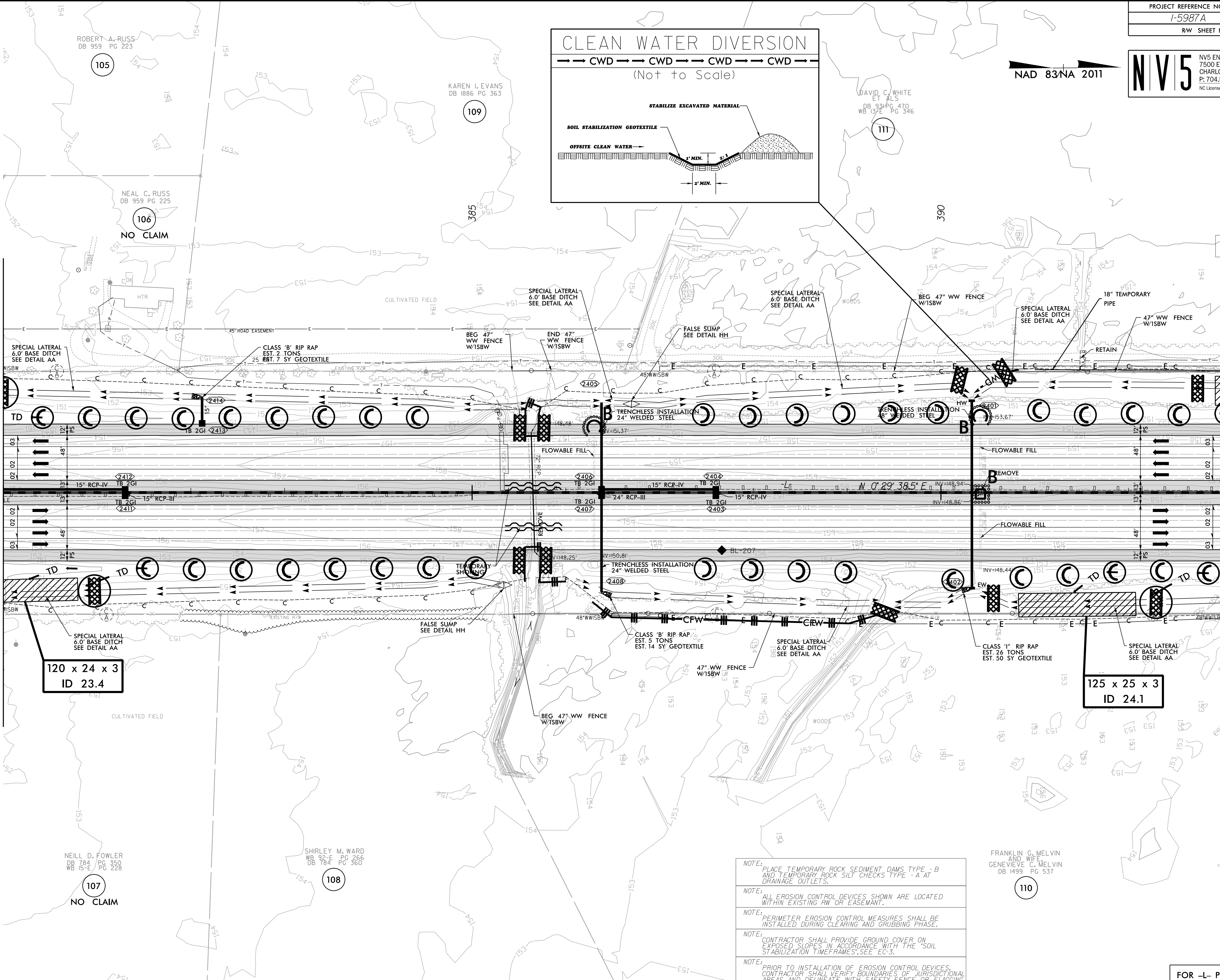
NAD 83/NA 2011



CLEARING AND GRUBBING  
EROSION CONTROL FOR  
CONSTRUCTION SHEET 24

MATCHLINE -L- STA 380 + 00.00 SEE SHEET 23

MATCHLINE -L- STA 393 + 00.00 SEE SHEET 25



120 x 24 x 3  
ID 23.4

125 x 25 x 3  
ID 24.1

- NOTE: PLACE TEMPORARY ROCK SEDIMENT DAMS TYPE - B AND TEMPORARY ROCK SILT CHECKS TYPE - A AT DRAINAGE OUTLETS.
- NOTE: ALL EROSION CONTROL DEVICES SHOWN ARE LOCATED WITHIN EXISTING RW OR EASEMENT.
- NOTE: PERIMETER EROSION CONTROL MEASURES SHALL BE INSTALLED DURING CLEARING AND GRUBBING PHASE.
- NOTE: CONTRACTOR SHALL PROVIDE GROUND COVER ON EXPOSED SLOPES IN ACCORDANCE WITH THE "SOIL STABILIZATION TIMEFRAMES", SEE EC-3.
- NOTE: PRIOR TO INSTALLATION OF EROSION CONTROL DEVICES, CONTRACTOR SHALL VERIFY BOUNDARIES OF JURISDICTIONAL AREAS AND DELINEATE WITH SAFETY FENCE OR FLAGGING.

FOR -L- PROFILE SEE SHEET 63

REVISIONS

8/17/99

8/7/2022  
A:\E\Commented\Design\15987A\_EC\_PSH\_024.dwg  
some130110

ROBERT A. RUSS  
DB 959 PG 223  
105

KAREN L. EVANS  
DB 1886 PG 363  
109

DAVID C. WHITE  
ET AL'S  
DB 934 PG 470  
WB 137E PG 346  
111

NEAL C. RUSS  
DB 959 PG 225  
106  
NO CLAIM

NEILL D. FOWLER  
DB 784 PG 350  
WB 15-E PG 228  
107  
NO CLAIM

SHIRLEY M. WARD  
WB 92-E PG 266  
DB 784 PG 360  
108

FRANKLIN G. MELVIN  
AND WIFE  
GENEVIEVE C. MELVIN  
DB 1499 PG 537  
110