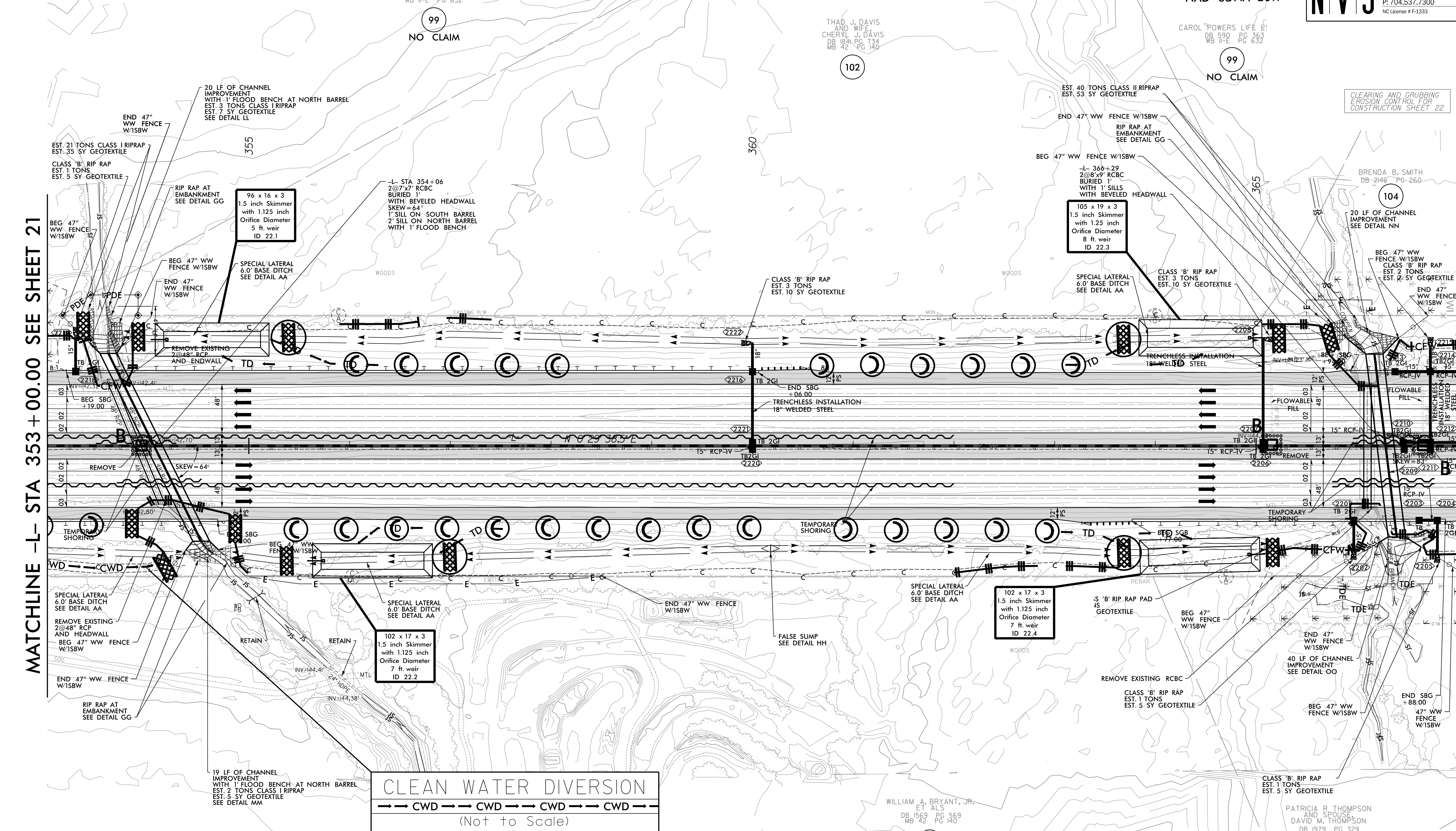


NAD 83/NA 2011

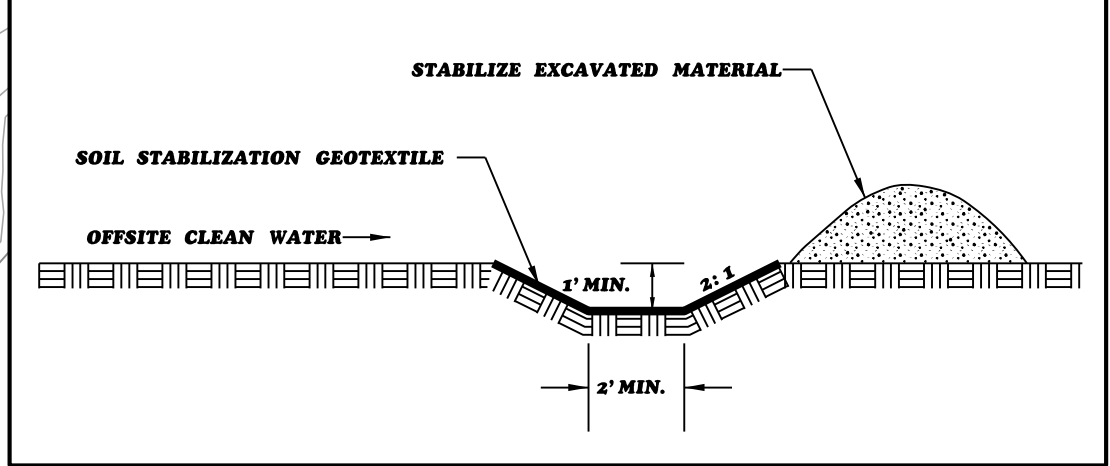
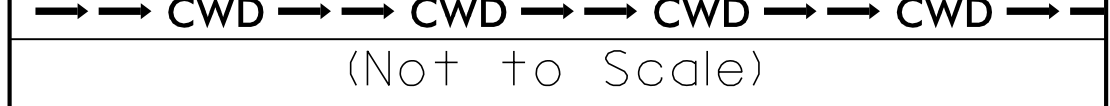
8/17/19

MATCHLINE -L- STA 353 + 00.00 SEE SHEET 21

MATCHLINE -L- STA 367 + 00.00 SEE SHEET 23



CLEAN WATER DIVERSION



- NOTE: PLACE TEMPORARY ROCK SEDIMENT DAMS TYPE - B AND TEMPORARY ROCK SILT CHECKS TYPE - A AT DRAINAGE OUTLETS.
- NOTE: ALL EROSION CONTROL DEVICES SHOWN ARE LOCATED WITHIN EXISTING RW OR EASEMENT.
- NOTE: PERIMETER EROSION CONTROL MEASURES SHALL BE INSTALLED DURING CLEARING AND GRUBBING PHASE.
- NOTE: CONTRACTOR SHALL PROVIDE GROUND COVER ON EXPOSED SLOPES IN ACCORDANCE WITH THE "SOIL STABILIZATION TIMEFRAMES", SEE EC-3.
- NOTE: PRIOR TO INSTALLATION OF EROSION CONTROL DEVICES, CONTRACTOR SHALL VERIFY BOUNDARIES OF JURISDICTIONAL AREAS AND DELINEATE WITH SAFETY FENCE OR FLAGGING.