

NOTE: PLACE TEMPORARY ROCK SEDIMENT DAMS TYPE - B AND TEMPORARY ROCK SILT CHECKS TYPE - A AT DRAINAGE OUTLETS.

NOTE: ALL EROSION CONTROL DEVICES SHOWN ARE LOCATED WITHIN EXISTING RW OR EASEMENT.

NOTE: PERIMETER EROSION CONTROL MEASURES SHALL BE INSTALLED DURING CLEARING AND GRUBBING PHASE.

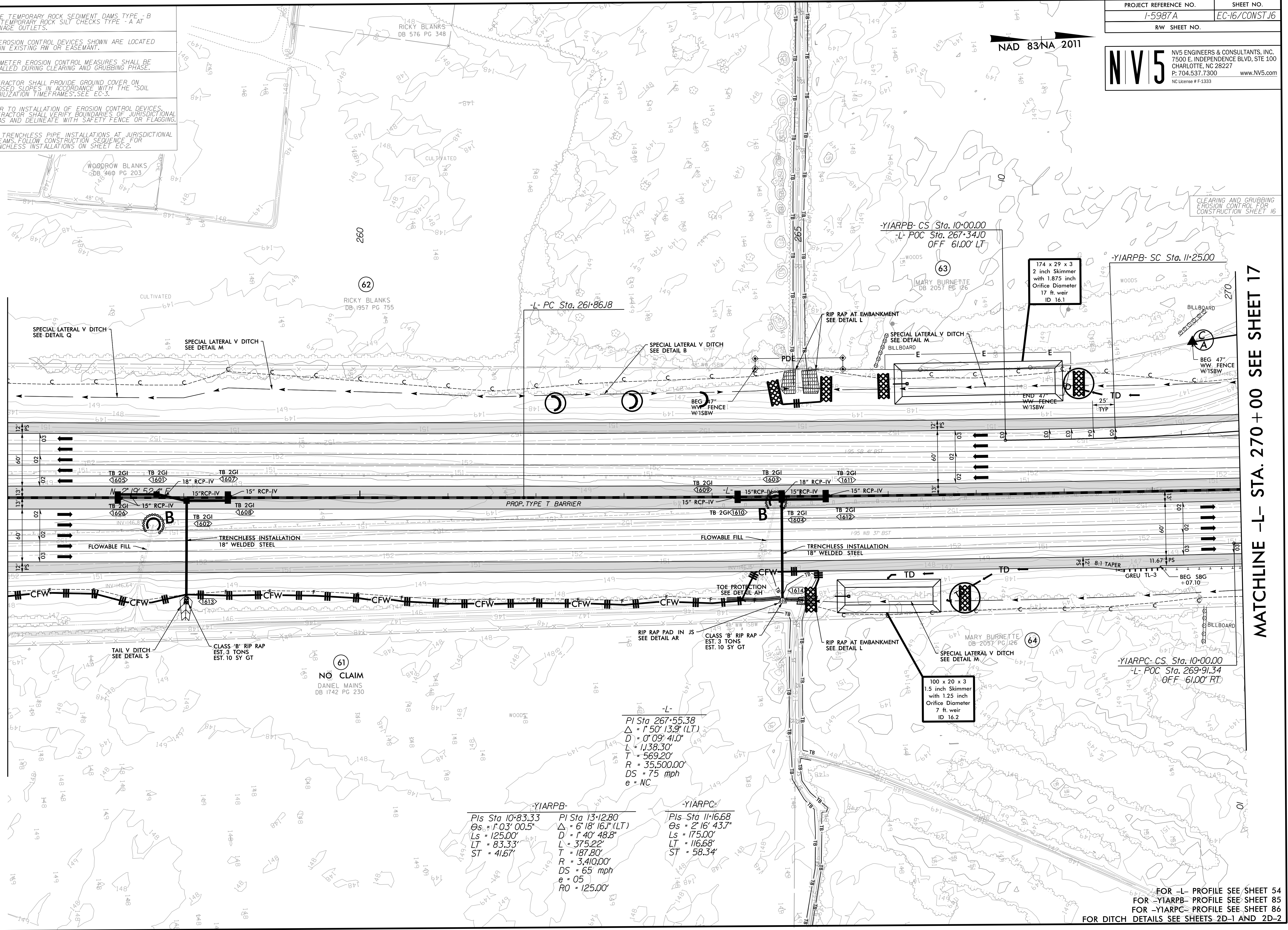
NOTE: CONTRACTOR SHALL PROVIDE GROUND COVER ON EXPOSED SLOPES IN ACCORDANCE WITH THE SOIL STABILIZATION TIMEFRAMES, SEE EC-3.

NOTE: PRIOR TO INSTALLATION OF EROSION CONTROL DEVICES, CONTRACTOR SHALL VERIFY BOUNDARIES OF JURISDICTIONAL AREAS AND DELINEATE WITH SAFETY FENCE OR FLAGGING.

NOTE: FOR TRENCHLESS PIPE INSTALLATIONS AT JURISDICTIONAL STREAMS, FOLLOW CONSTRUCTION SEQUENCE FOR TRENCHLESS INSTALLATIONS ON SHEET EC-2.

MATCHLINE -L- STA. 256 + 00 SEE SHEET 15

MATCHLINE -L- STA. 270 + 00 SEE SHEET 17



-L-
 PI Sta 267+55.38
 $\Delta = 1' 50" 13.9" (LT)$
 $D = 0' 09" 41.0"$
 $L = 1138.30'$
 $T = 569.20'$
 $R = 35,500.00'$
 $DS = 75 \text{ mph}$
 $e = NC$

-YIARPB-
 Pls Sta 10+83.33
 $\Theta_s = 1' 03" 00.5"$
 $L_s = 125.00'$
 $LT = 83.33'$
 $ST = 41.67'$

PI Sta 13+12.80
 $\Delta = 6' 18" 16.1" (LT)$
 $D = 1' 40" 48.8"$
 $L = 375.22'$
 $T = 187.80'$
 $R = 3,410.00'$
 $DS = 65 \text{ mph}$
 $e = 05$
 $RO = 125.00'$

-YIARPC-
 Pls Sta 11+16.68
 $\Theta_s = 2' 16" 43.7"$
 $L_s = 175.00'$
 $LT = 116.68'$
 $ST = 58.34'$

FOR -L- PROFILE SEE SHEET 54
 FOR -YIARPB- PROFILE SEE SHEET 85
 FOR -YIARPC- PROFILE SEE SHEET 86
 FOR DITCH DETAILS SEE SHEETS 2D-1 AND 2D-2

4/7/2022 R:\Environmental\Design\15987A_EC.PSH_016.dgn