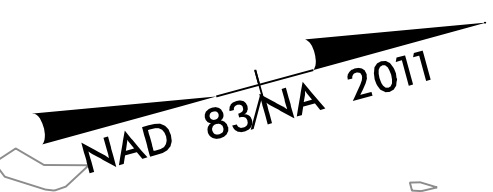


8/17/99

- NOTE: PLACE TEMPORARY ROCK SEDIMENT DAMS TYPE - B AND TEMPORARY ROCK SILT CHECKS TYPE - A AT DRAINAGE OUTLETS.
- NOTE: ALL EROSION CONTROL DEVICES SHOWN ARE LOCATED WITHIN EXISTING RW OR EASEMENT.
- NOTE: PERIMETER EROSION CONTROL MEASURES SHALL BE INSTALLED DURING CLEARING AND GRUBBING PHASE.
- NOTE: CONTRACTOR SHALL PROVIDE GROUND COVER ON EXPOSED SLOPES IN ACCORDANCE WITH THE "SOIL STABILIZATION TIMEFRAMES", SEE EC-3.
- NOTE: PRIOR TO INSTALLATION OF EROSION CONTROL DEVICES, CONTRACTOR SHALL VERIFY BOUNDARIES OF JURISDICTIONAL AREAS AND DELINEATE WITH SAFETY FENCE OR FLAGGING.

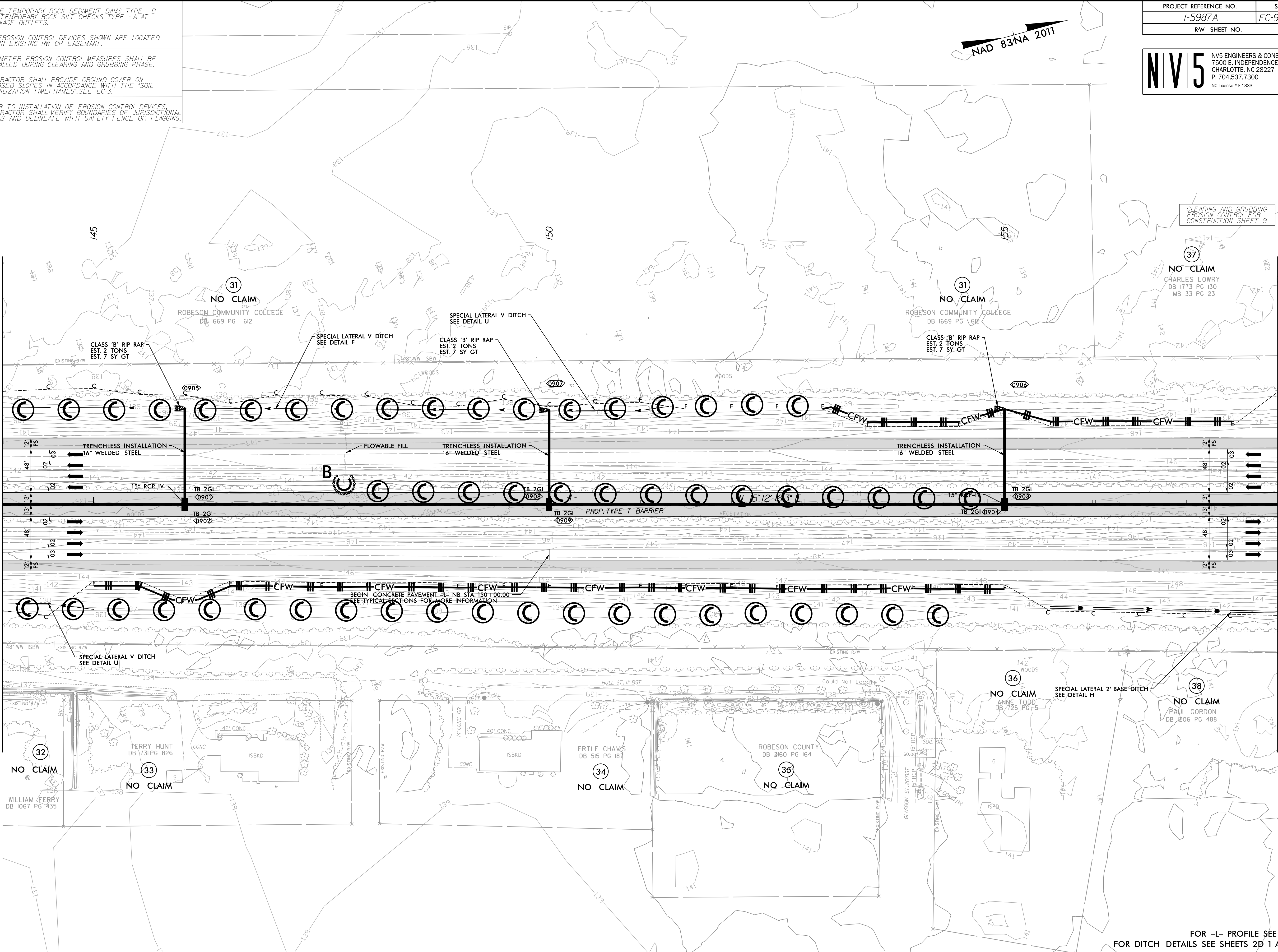
PROJECT REFERENCE NO. 1-5987A	SHEET NO. EC-9/CONST.9
RW SHEET NO.	

NIV5 NV5 ENGINEERS & CONSULTANTS, INC.
7500 E. INDEPENDENCE BLVD, STE 100
CHARLOTTE, NC 28227
P: 704.537.7300 www.NV5.com
NC License # F-1333



MATCHLINE -L- STA. 144 + 00 SEE SHEET 8

MATCHLINE -L- STA. 158 + 00 SEE SHEET 10



CLEARING AND GRUBBING EROSION CONTROL FOR CONSTRUCTION SHEET 9

31 NO CLAIM
ROBESON COMMUNITY COLLEGE
DB 1669 PG 612

31 NO CLAIM
ROBESON COMMUNITY COLLEGE
DB 1669 PG 612

37 NO CLAIM
CHARLES LOWRY
DB 1773 PG 130
MB 33 PG 23

32 NO CLAIM
WILLIAM FERRY
DB 1067 PG 435

33 NO CLAIM
TERRY HUNT
DB 731 PG 826

34 NO CLAIM
ERTLE CHAVS
DB 515 PG 181

35 NO CLAIM
ROBESON COUNTY
DB 2160 PG 164

36 NO CLAIM
ANNE TODD
DB 1725 PG 15

38 NO CLAIM
PAUL GORDON
DB 1206 PG 488

FOR -L- PROFILE SEE SHEET 46
FOR DITCH DETAILS SEE SHEETS 2D-1 AND 2D-2

4/7/2022
R:\E\2022\Commented\Design\15987A_EC_PSH_09.dgn
some15987A