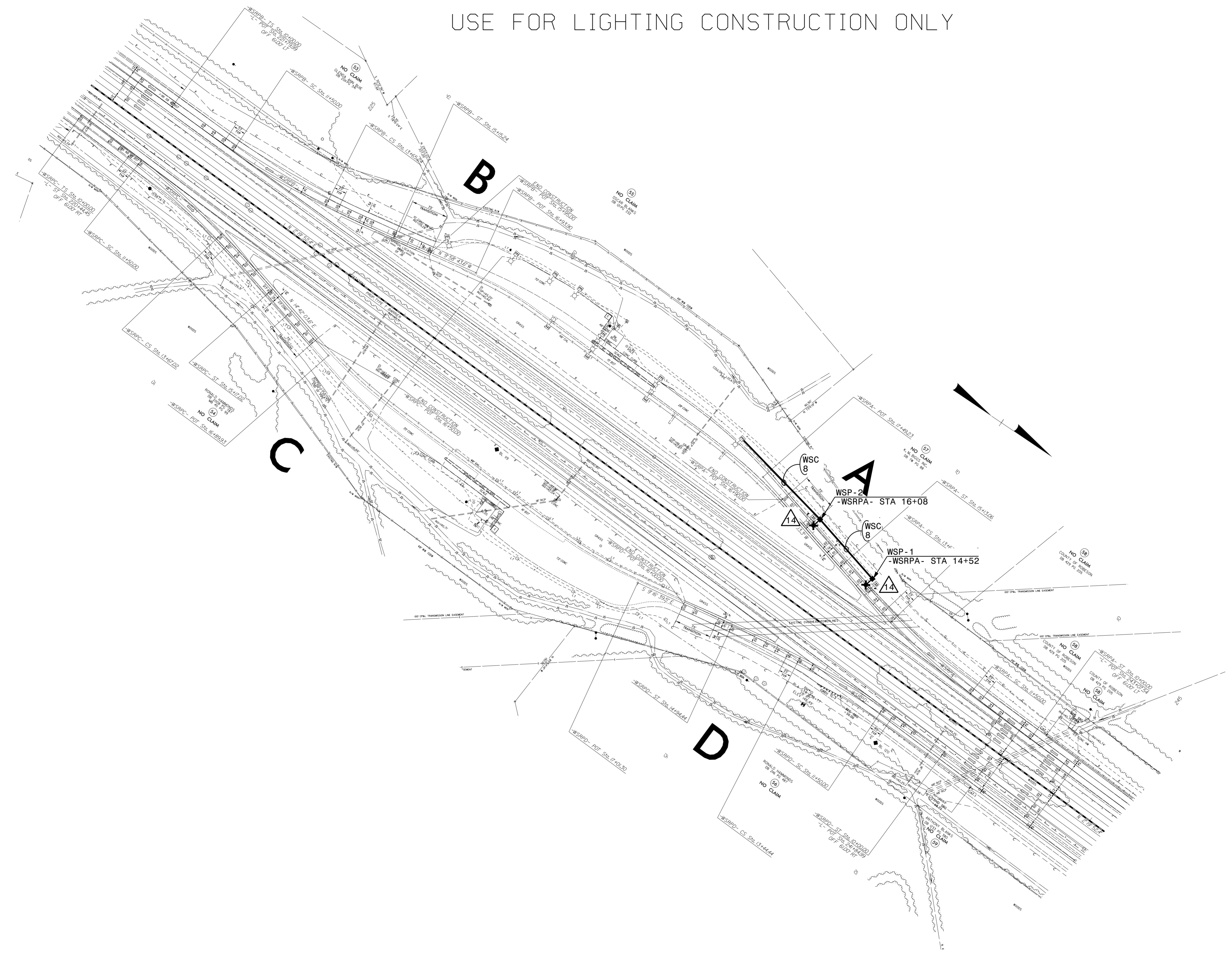


**DOCUMENT NOT CONSIDERED FINAL
UNLESS ALL SIGNATURES COMPLETED**

USE FOR LIGHTING CONSTRUCTION ONLY



SEE SHEET "E-1" FOR
LEGEND & △ NOTES

2			
1			
Rev.	Date	Description	Approved
NORTH CAROLINA DEPARTMENT OF TRANSPORTATION ROADWAY DESIGN LIGHTING/ELECTRICAL SECTION LIGHTING LAYOUT WEIGH STATION SOUTH BOUND I-95 ROBESON COUNTY			
Drawn By:	SAM	Approved By:	RGH
		Dwg No.:	

24-FEB-2022 14:37
 R:\1\Lighting Design\1-5987A CS - L & M\15987A.LE_PSH.E5.dgn
 somehtk AT RD-304555