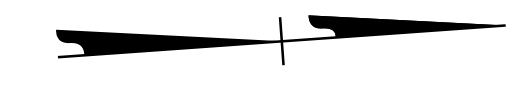
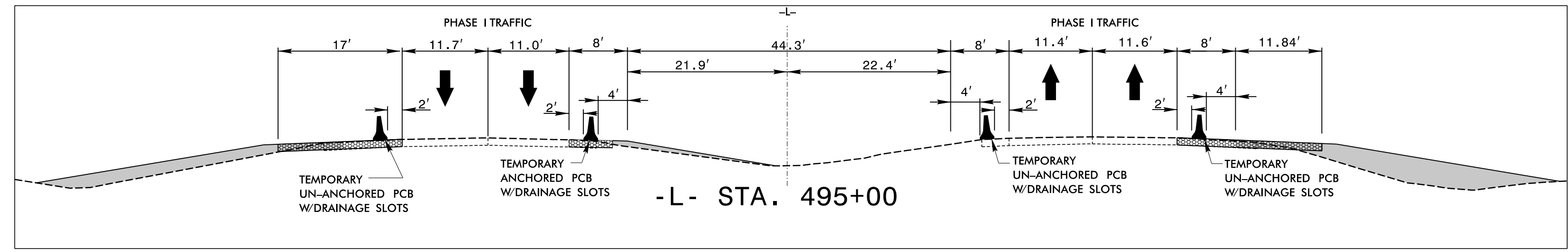
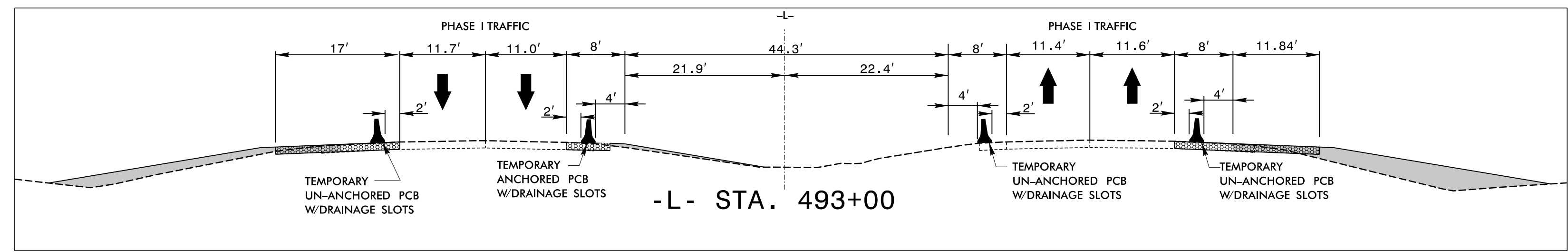
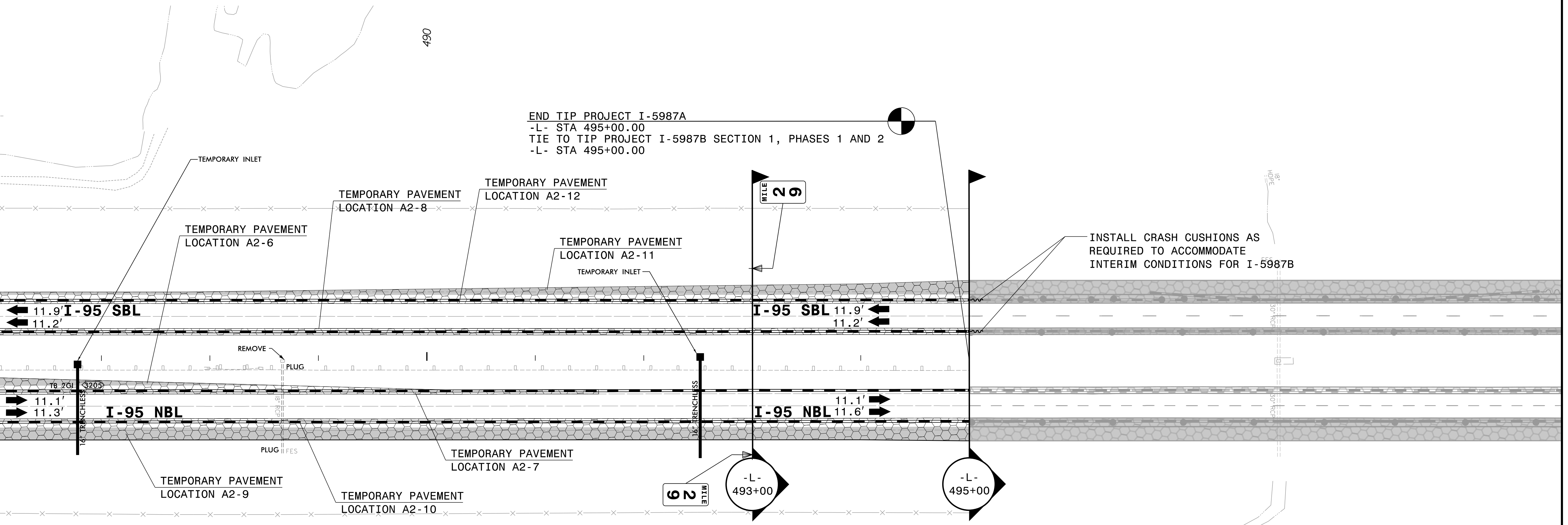


TEMPORARY PAVEMENT LOCATION A2-6 ON INSIDE SHOULDER OF NB I-95 ON -L- FROM STA 464+00 +/- TO STA 477+00 +/- FOR TEMPORARY TRAFFIC PATTERN (48,835 SF)	TEMPORARY PAVEMENT LOCATION A2-8 ON INSIDE SHOULDER OF SB I-95 ON -L- FROM STA 465+50 +/- TO STA 495+00 +/- FOR THE PLACEMENT OF TEMPORARY ANCHORED PCB (17,698 SF)	TEMPORARY PAVEMENT LOCATION A2-10 ON OUTSIDE SHOULDER OF NB I-95 ON -L- FROM STA 477+00 +/- TO STA 495+00 +/- FOR THE PLACEMENT OF TEMPORARY PCB (14,400SF)	TEMPORARY PAVEMENT LOCATION A2-12 ON OUTSIDE SHOULDER OF SB I-95 ON -L- FROM STA 464+00 +/- TO STA 474+00 +/- FOR THE PLACEMENT OF TEMPORARY ANCHORED PCB (11,760 SF)
TEMPORARY PAVEMENT LOCATION A2-7 ON INSIDE SHOULDER OF NB I-95 ON -L- FROM STA 464+00 +/- TO STA 477+00 +/- FOR THE PLACEMENT OF TEMPORARY ANCHORED PCB (21,175 SF)	TEMPORARY PAVEMENT LOCATION A2-9 ON OUTSIDE SHOULDER OF NB I-95 ON -L- FROM STA 477+00 +/- TO STA 495+00 +/- FOR TEMPORARY TRAFFIC PATTERN (20,906 SF)	TEMPORARY PAVEMENT LOCATION A2-11 ON OUTSIDE SHOULDER OF SB I-95 ON -L- FROM STA 464+00 +/- TO STA 474+00 +/- FOR TEMPORARY TRAFFIC PATTERN (7,037 SF)	TEMPORARY PAVEMENT LESS THAN 8' WIDE TO BE COMPLETED USING LANE CLOSURES. SEE PHASING NOTES FOR DETAIL.



MATCHLINE -L- STA 486+00.00 SEE SHEET TMP-153



4/14/2022 X:\Raleigh\20-0629.001 - I-5987A TCP Sec IN:05-CADNI-5987A\TrafficControl\TCP\PSHV\Phase IN:5987A-TMP_psh54.dgn JAdorno

APPROVED: _____
 DATE: 04/12/2022

5/18/2022

**DOCUMENT NOT CONSIDERED FINAL
UNLESS ALL SIGNATURES COMPLETED**



**TEMPORARY TRAFFIC CONTROL
PHASE I DETAIL**