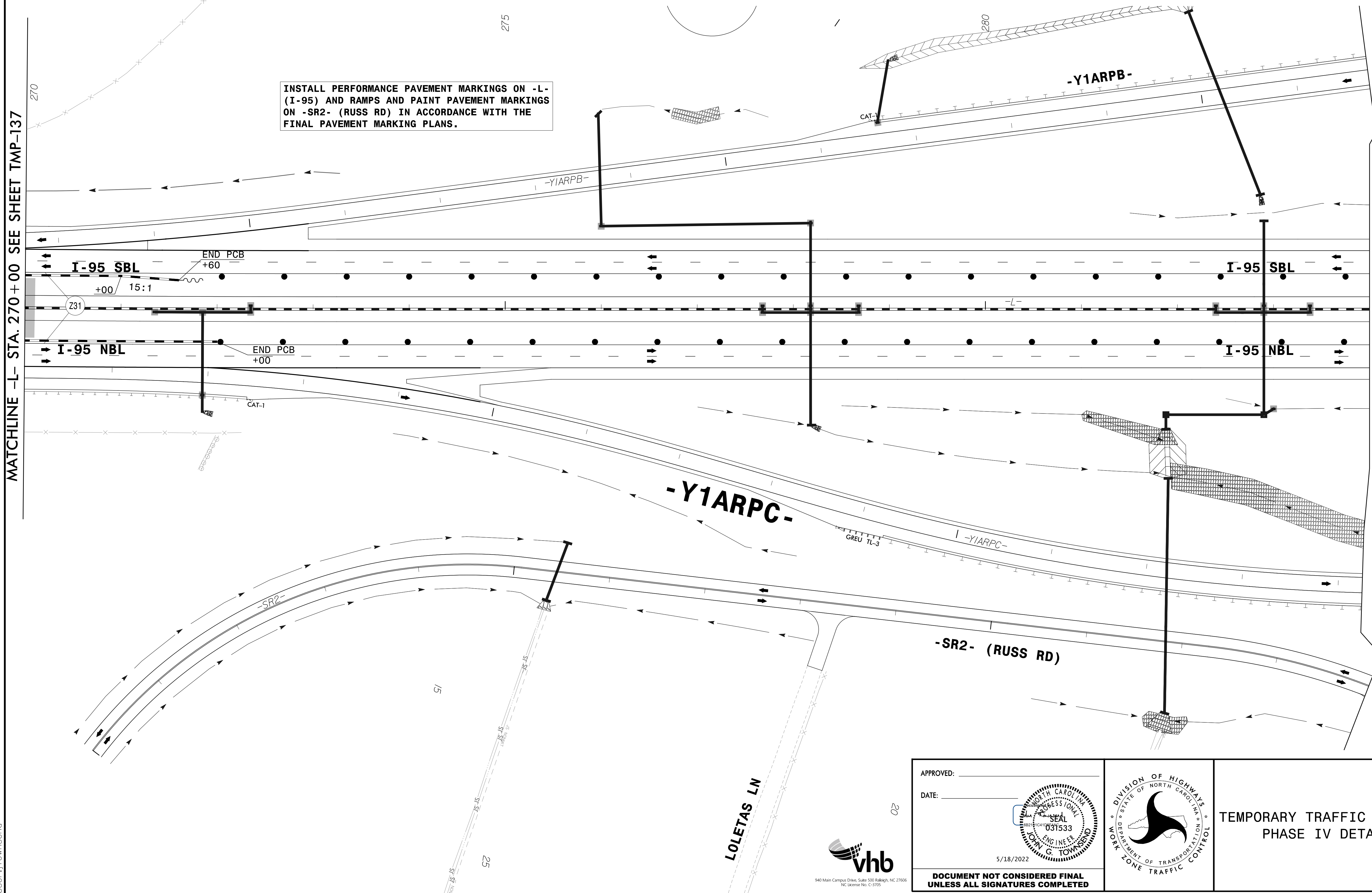


MATCHLINE -L- STA. 270 +00 SEE SHEET TMP-137

MATCHLINE -L- STA. 284 +00 SEE SHEET TMP-139

INSTALL PERFORMANCE PAVEMENT MARKINGS ON -L- (I-95) AND RAMPS AND PAINT PAVEMENT MARKINGS ON -SR2- (RUSS RD) IN ACCORDANCE WITH THE FINAL PAVEMENT MARKING PLANS.



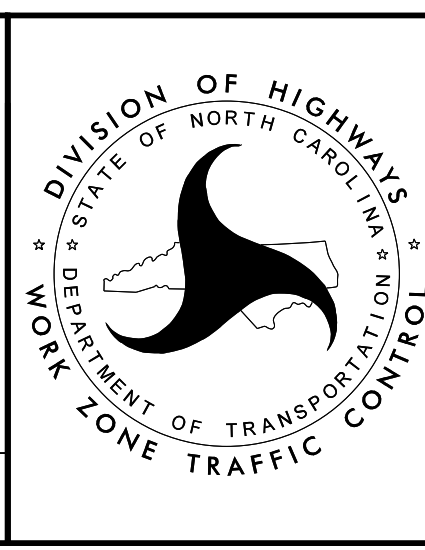
4/26/2022 R:\TrafficControl\TCP\B987a_tcp_secd_phase_4_psh138.dgn User:jtowmsend



APPROVED: _____
DATE: _____

5/18/2022

**DOCUMENT NOT CONSIDERED FINAL
UNLESS ALL SIGNATURES COMPLETED**



TEMPORARY TRAFFIC CONTROL
PHASE IV DETAIL