

MATCHLINE -L- STA. 298 + 00 SEE SHEET TMP-124

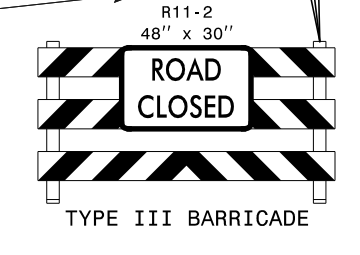
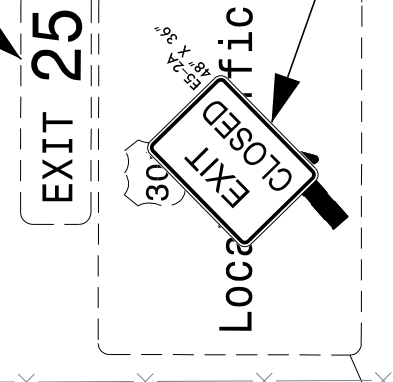
MATCHLINE -L- STA. 312 + 00 SEE SHEET TMP-126

TEMPORARY RAMP CONNECTION TO BE COMPLETED UNDER 15 DAY ICT FOR CLOSURE OF THE I-95 SB OFF RAMP AT THE START OF PHASE III. SEE ROADWAY PLANS FOR TEMPORARY RAMP DETAIL (-Y1ARPADET-).

INSTALL UPON COMPLETION OF THE TEMPORARY RAMP CONNECTION REMOVE WITH THE CLOSURE OF THE TEMPORARY RAMP CONNECTION

RELOCATED ONTO TEMPORARY SUPPORTS

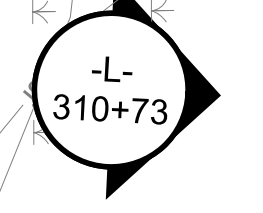
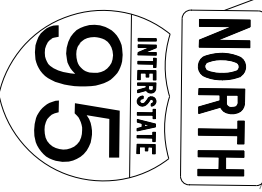
REMOVE UPON COMPLETION OF THE TEMPORARY RAMP CONNECTION AND REINSTALL WITH THE CLOSURE OF THE TEMPORARY RAMP CONNECTION



TEMPORARY PCB W/ DRAINAGE SLOTS AND TEMPORARY GLARE SCREEN

TEMPORARY PCB W/ DRAINAGE SLOTS REMOVE UPON COMPLETION OF THE TEMPORARY RAMP CONNECTION AND REINSTALL WITH THE CLOSURE OF THE TEMPORARY RAMP CONNECTION

SHIFT/RELOCATE SIGNS LOCATED BEHIND PCB WITHIN THE WORK AREA AS NEEDED TO COMPLETE THE WORK AROUND THEM.



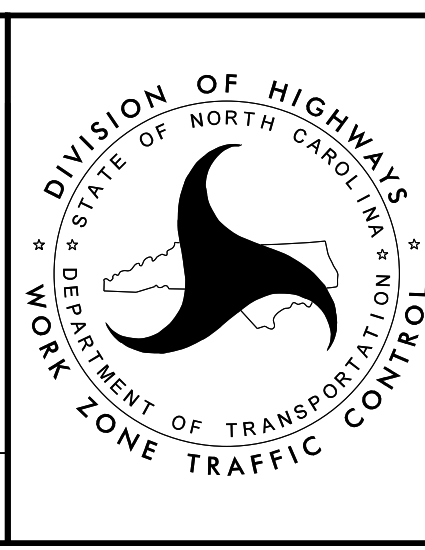
4/26/2022 R:\TrafficControl\TCP\B987a\_tcp\_secd\_phase\_3\_psh\25.dgn User:jtownsend



APPROVED: \_\_\_\_\_  
DATE: \_\_\_\_\_

5/18/2022

**DOCUMENT NOT CONSIDERED FINAL UNLESS ALL SIGNATURES COMPLETED**



TEMPORARY TRAFFIC CONTROL PHASE III DETAIL