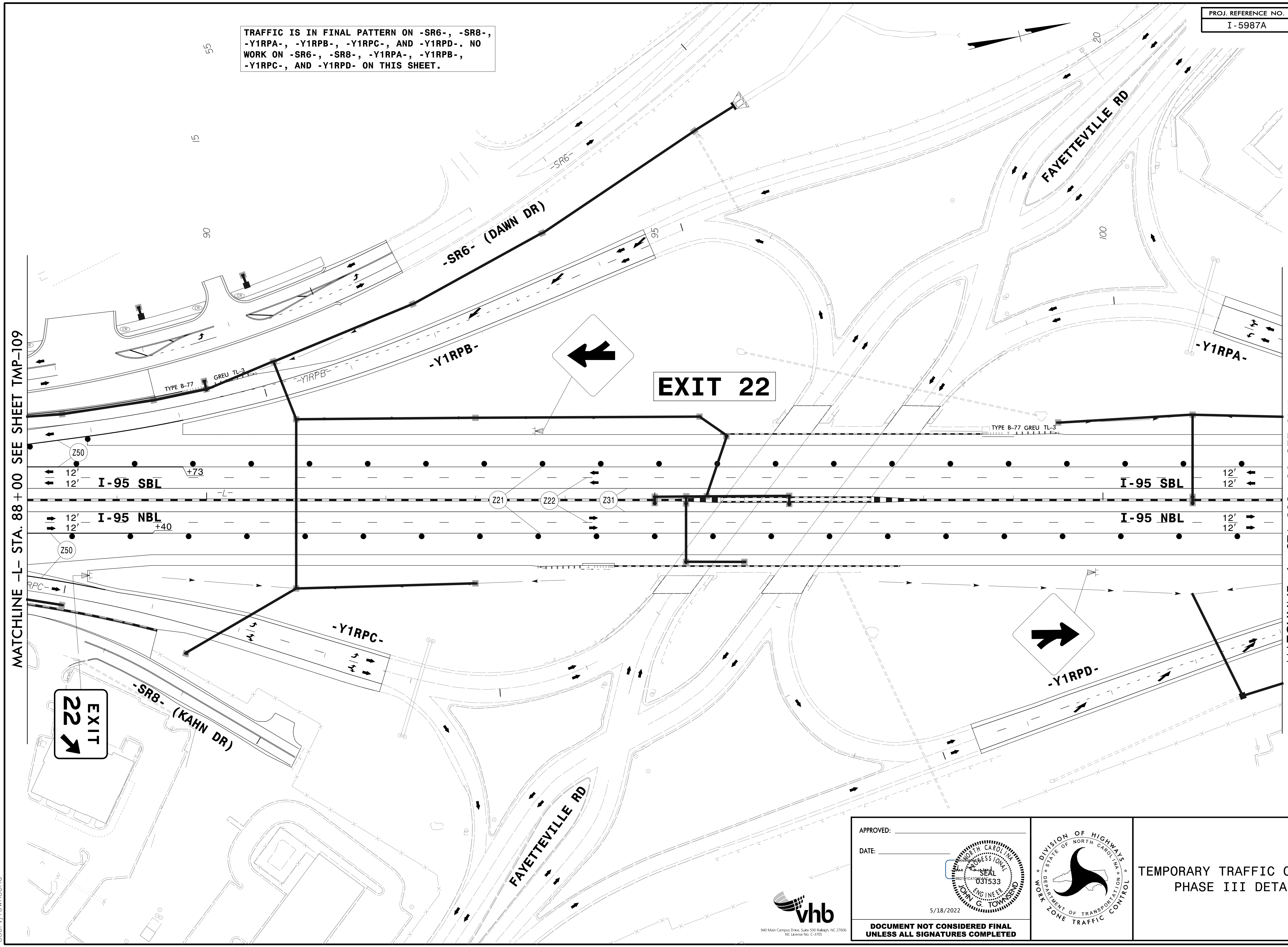


TRAFFIC IS IN FINAL PATTERN ON -SR6-, -SR8-,
 -Y1RPA-, -Y1RPB-, -Y1RPC-, AND -Y1RPD-. NO
 WORK ON -SR6-, -SR8-, -Y1RPA-, -Y1RPB-,
 -Y1RPC-, AND -Y1RPD- ON THIS SHEET.

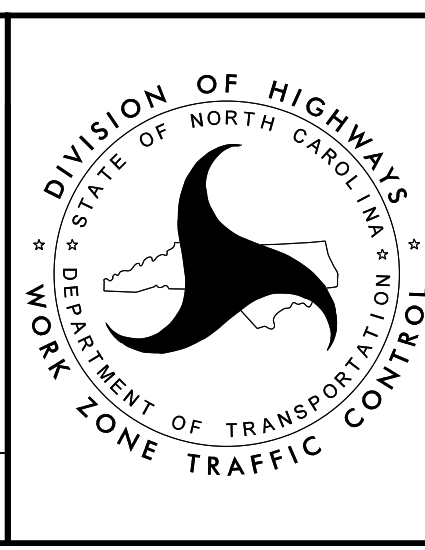


4/26/2022
 R:\TrafficControl\TCP\B987a_tcp_secd_phase_3_pshl10.dgn
 User:jtownsend

APPROVED: _____
 DATE: _____

5/18/2022

**DOCUMENT NOT CONSIDERED FINAL
 UNLESS ALL SIGNATURES COMPLETED**



TEMPORARY TRAFFIC CONTROL
 PHASE III DETAIL

