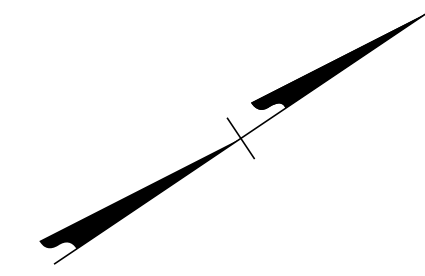


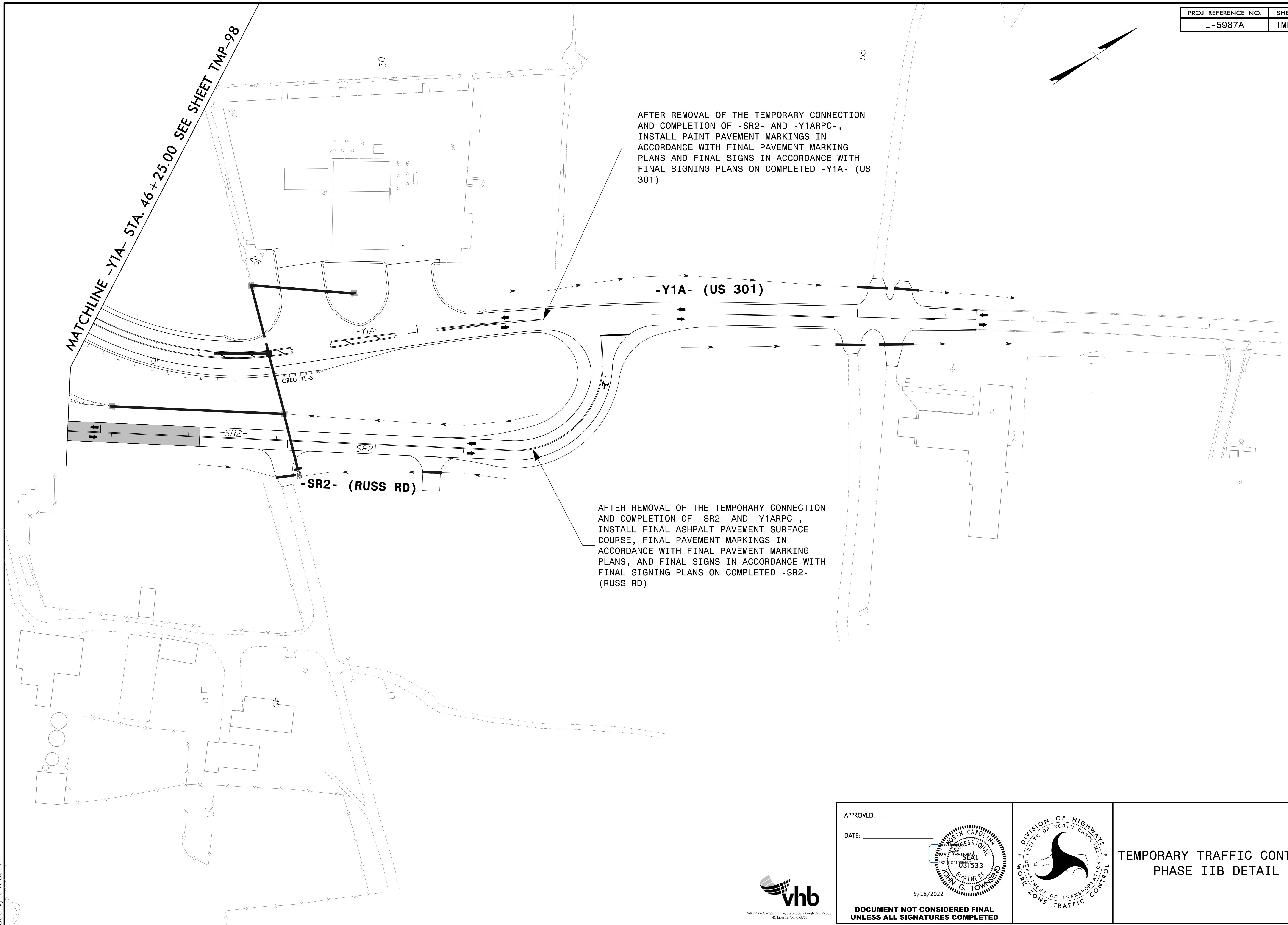
PROJ. REFERENCE NO.	SHEET NO.
I-5987A	TMP-107



MATCHLINE -Y1A- STA. 46+25.00 SEE SHEET TMP-98

AFTER REMOVAL OF THE TEMPORARY CONNECTION AND COMPLETION OF -SR2- AND -Y1ARPC-, INSTALL PAINT PAVEMENT MARKINGS IN ACCORDANCE WITH FINAL PAVEMENT MARKING PLANS AND FINAL SIGNS IN ACCORDANCE WITH FINAL SIGNING PLANS ON COMPLETED -Y1A- (US 301)

AFTER REMOVAL OF THE TEMPORARY CONNECTION AND COMPLETION OF -SR2- AND -Y1ARPC-, INSTALL FINAL ASPHALT PAVEMENT SURFACE COURSE, FINAL PAVEMENT MARKINGS IN ACCORDANCE WITH FINAL PAVEMENT MARKING PLANS, AND FINAL SIGNS IN ACCORDANCE WITH FINAL SIGNING PLANS ON COMPLETED -SR2- (RUSS RD)

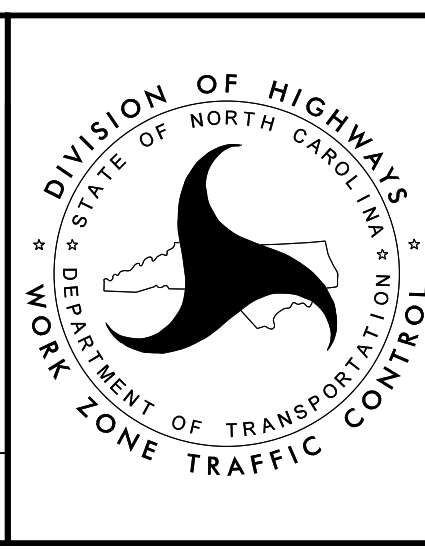


4/26/2022
R:\TrafficControl\TCP\I5987a_tcp_secd_phase_2b_psh07.dgn
User:jtownsend

APPROVED: _____
DATE: _____

5/18/2022

**DOCUMENT NOT CONSIDERED FINAL
UNLESS ALL SIGNATURES COMPLETED**



**TEMPORARY TRAFFIC CONTROL
PHASE IIB DETAIL**

