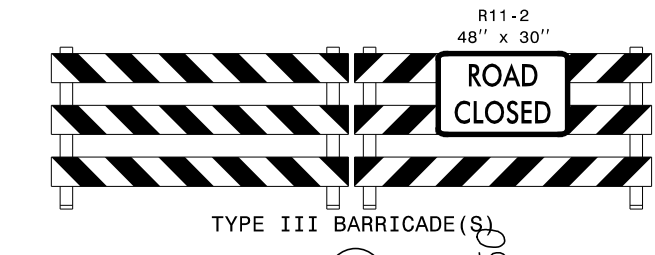
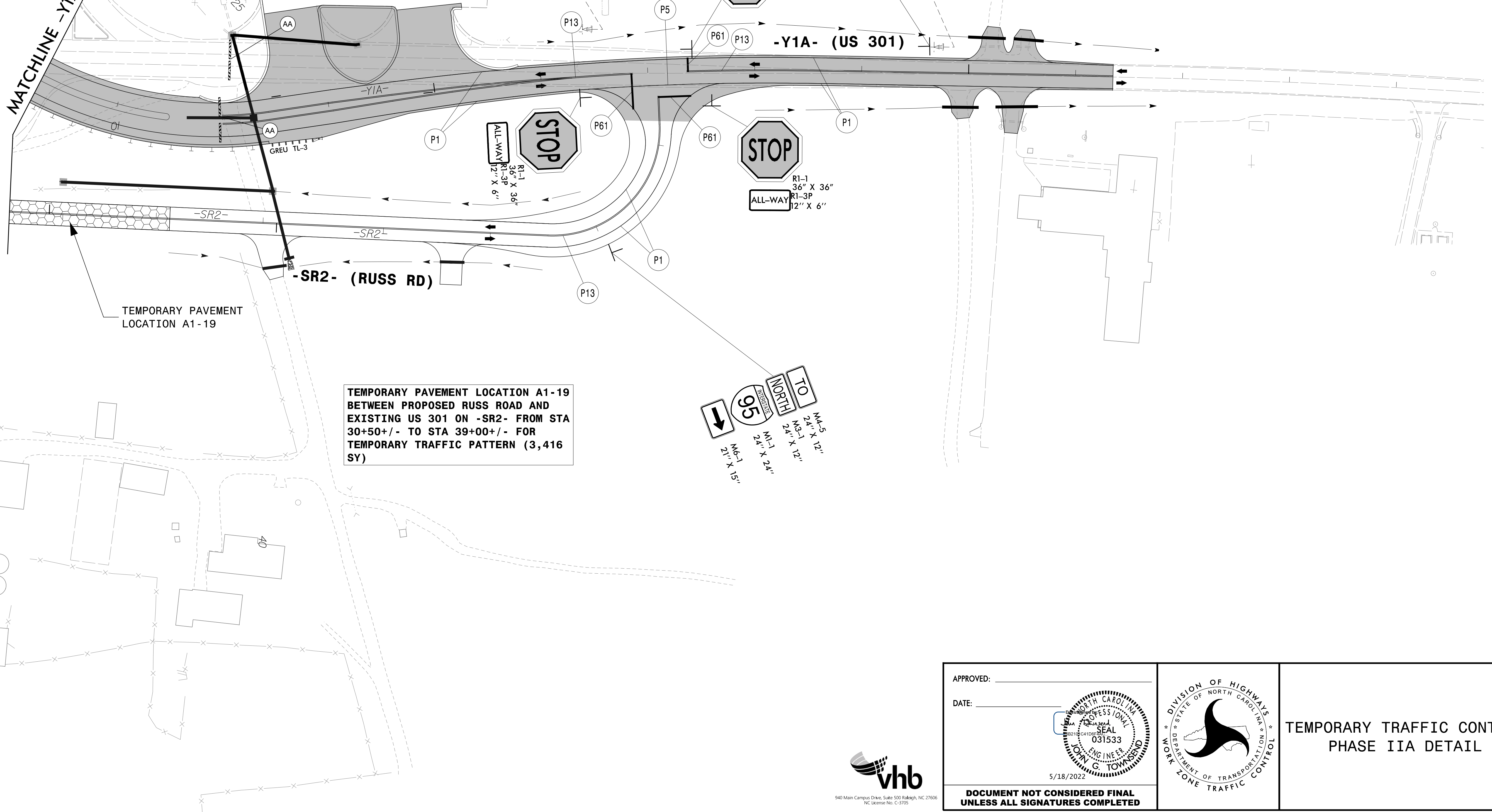
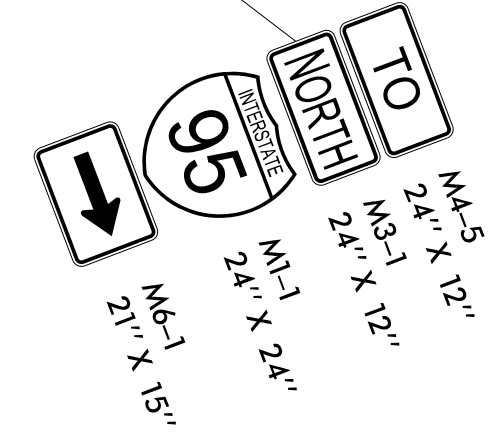
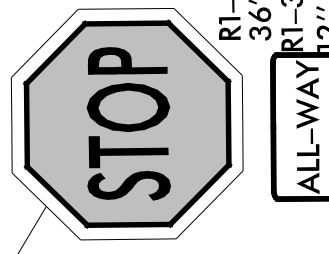
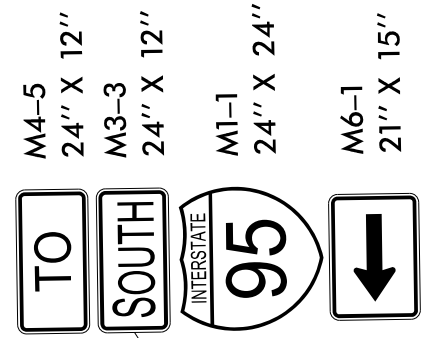
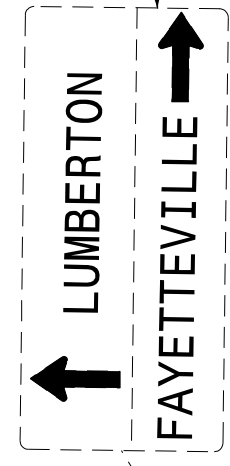


MATCHLINE -Y1A- STA. 46+25.00 SEE SHEET TMP-72



REMOVE



TEMPORARY PAVEMENT LOCATION A1-19

TEMPORARY PAVEMENT LOCATION A1-19 BETWEEN PROPOSED RUSS ROAD AND EXISTING US 301 ON -SR2- FROM STA 30+50+/- TO STA 39+00+/- FOR TEMPORARY TRAFFIC PATTERN (3,416 SY)

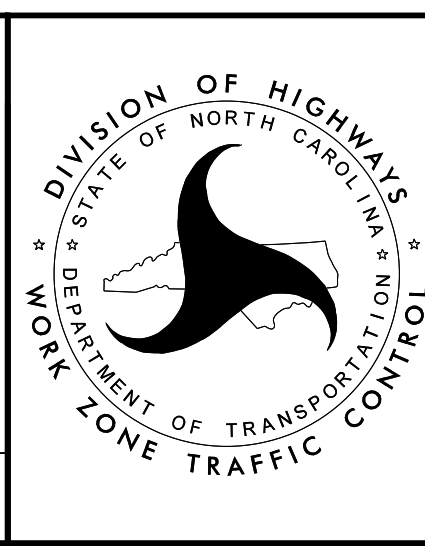
4/26/2022 R:\Traffic\TrafficControl\TCP\B987a_tcp_secd_phase_2a_psh081.dgn User:jtownsend



APPROVED: _____
DATE: _____

5/18/2022

**DOCUMENT NOT CONSIDERED FINAL
UNLESS ALL SIGNATURES COMPLETED**



TEMPORARY TRAFFIC CONTROL
PHASE IIA DETAIL