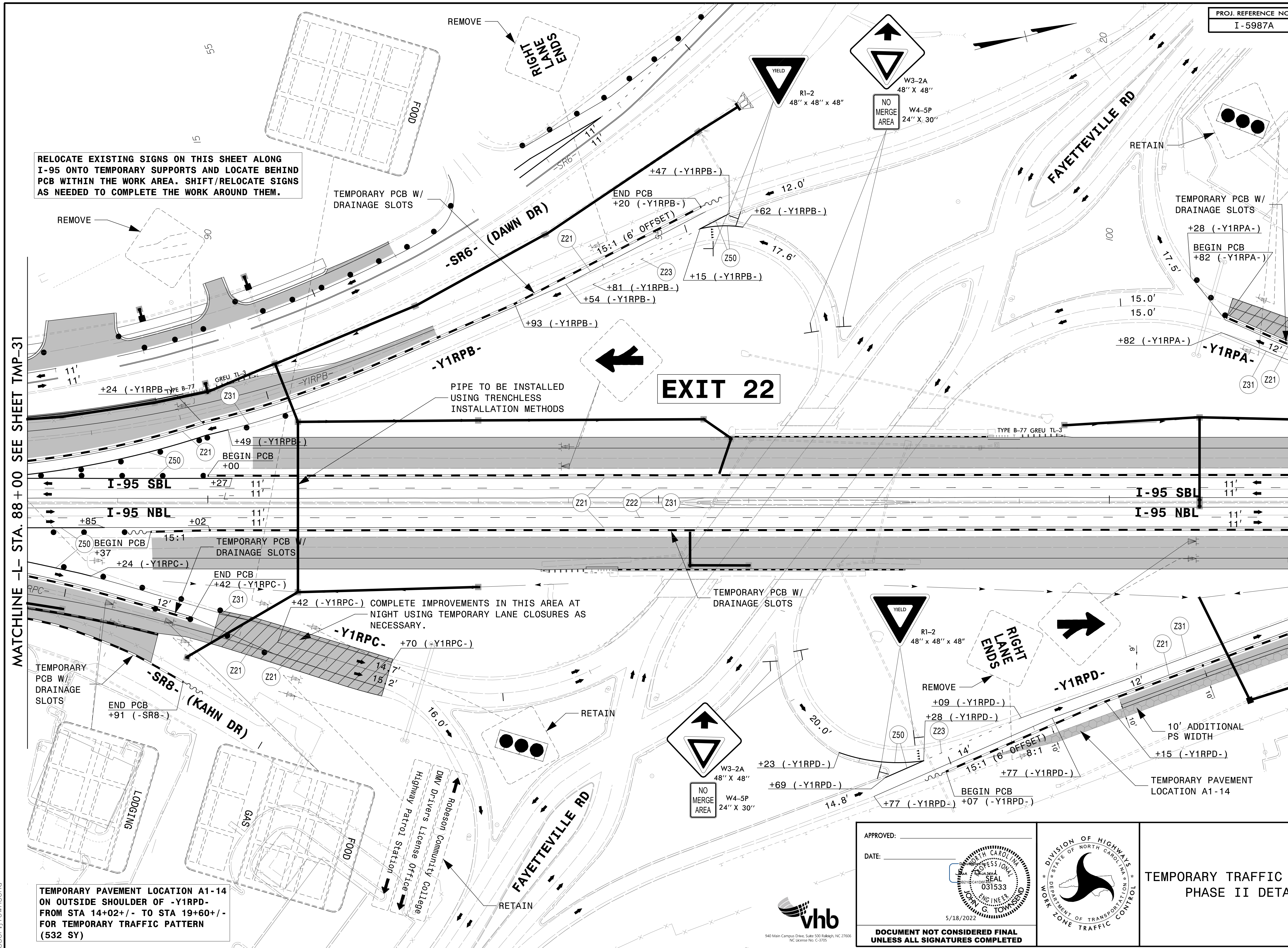


RELOCATE EXISTING SIGNS ON THIS SHEET ALONG I-95 ONTO TEMPORARY SUPPORTS AND LOCATE BEHIND PCB WITHIN THE WORK AREA. SHIFT/RELOCATE SIGNS AS NEEDED TO COMPLETE THE WORK AROUND THEM.

MATCHLINE -L- STA. 88 + 00 SEE SHEET TMP-31

MATCHLINE -L- STA. 102 + 00 SEE SHEET TMP-33

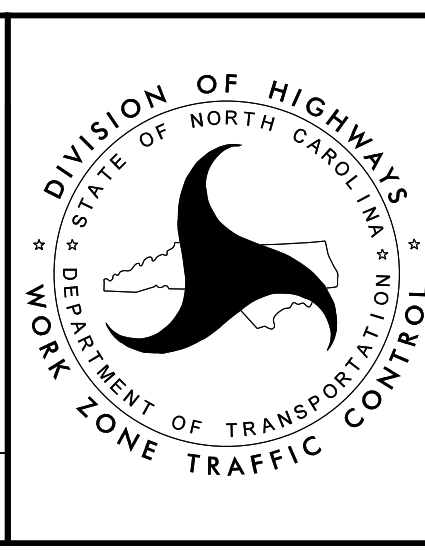


TEMPORARY PAVEMENT LOCATION A1-14 ON OUTSIDE SHOULDER OF -Y1RPD- FROM STA 14+02 +/- TO STA 19+60 +/- FOR TEMPORARY TRAFFIC PATTERN (532 SY)

APPROVED: _____
 DATE: _____

5/18/2022

DOCUMENT NOT CONSIDERED FINAL UNLESS ALL SIGNATURES COMPLETED



TEMPORARY TRAFFIC CONTROL PHASE II DETAIL

4/26/2022 R:\TrafficControl\I-95\I-95987a_tcp_secd_phase_2_psh032.dgn User:jtownsend



940 Main Campus Drive, Suite 500 Raleigh, NC 27606
 NC License No. C-3700