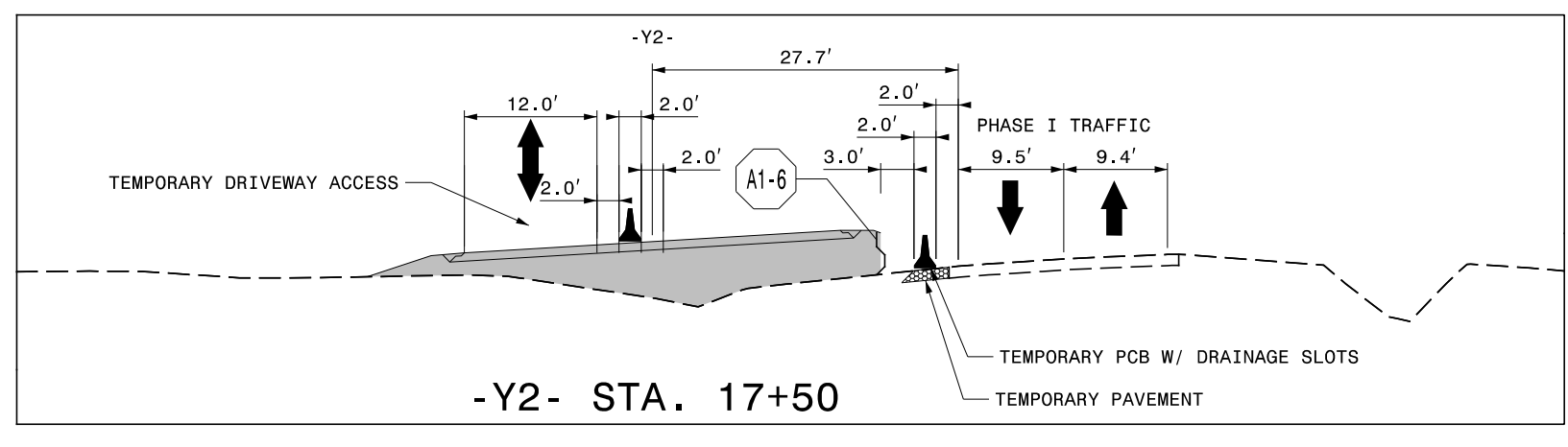


TEMPORARY PAVEMENT LESS THAN 8' WIDE TO BE COMPLETED USING LANE CLOSURES. SEE PHASING NOTES FOR DETAIL.

TEMPORARY PAVEMENT LOCATION A1-9 ON OUTSIDE SHOULDER OF WB POWERSVILLE RD ON -Y2- FROM STA 15+99+/- TO STA 28+20+/- FOR TEMPORARY PCB (814 SY)



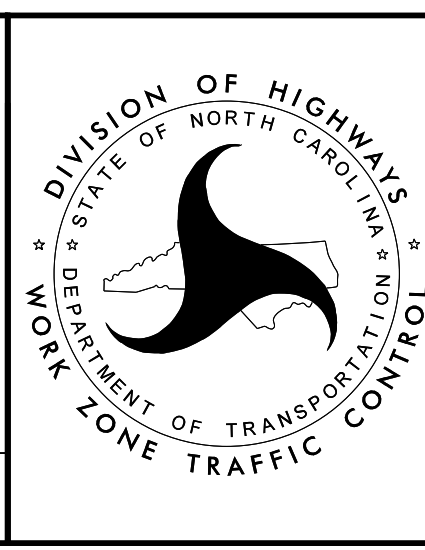
4/26/2022 R:\TrafficControl\TCP\B987a_tcp_secd_phase1.psh024.dgn User:JHwmsend



APPROVED: _____
 DATE: _____

JOHN C. TOWNSEND
 PROFESSIONAL ENGINEER
 031533
 5/18/2022

DOCUMENT NOT CONSIDERED FINAL UNLESS ALL SIGNATURES COMPLETED



TEMPORARY TRAFFIC CONTROL PHASE I DETAIL