

PROJ. REFERENCE NO.	SHEET NO.
I-5987A	TMP-20

MATCHLINE -Y1A-
STA. 37+00.00
SEE SHEET TMP-27

A1-7 QUANTITY = 820 SF
TEMPORARY SHORING
FROM -L- STA. 285+55.84, 67.93'
TO -L- STA. 287+60.01, 68.60'

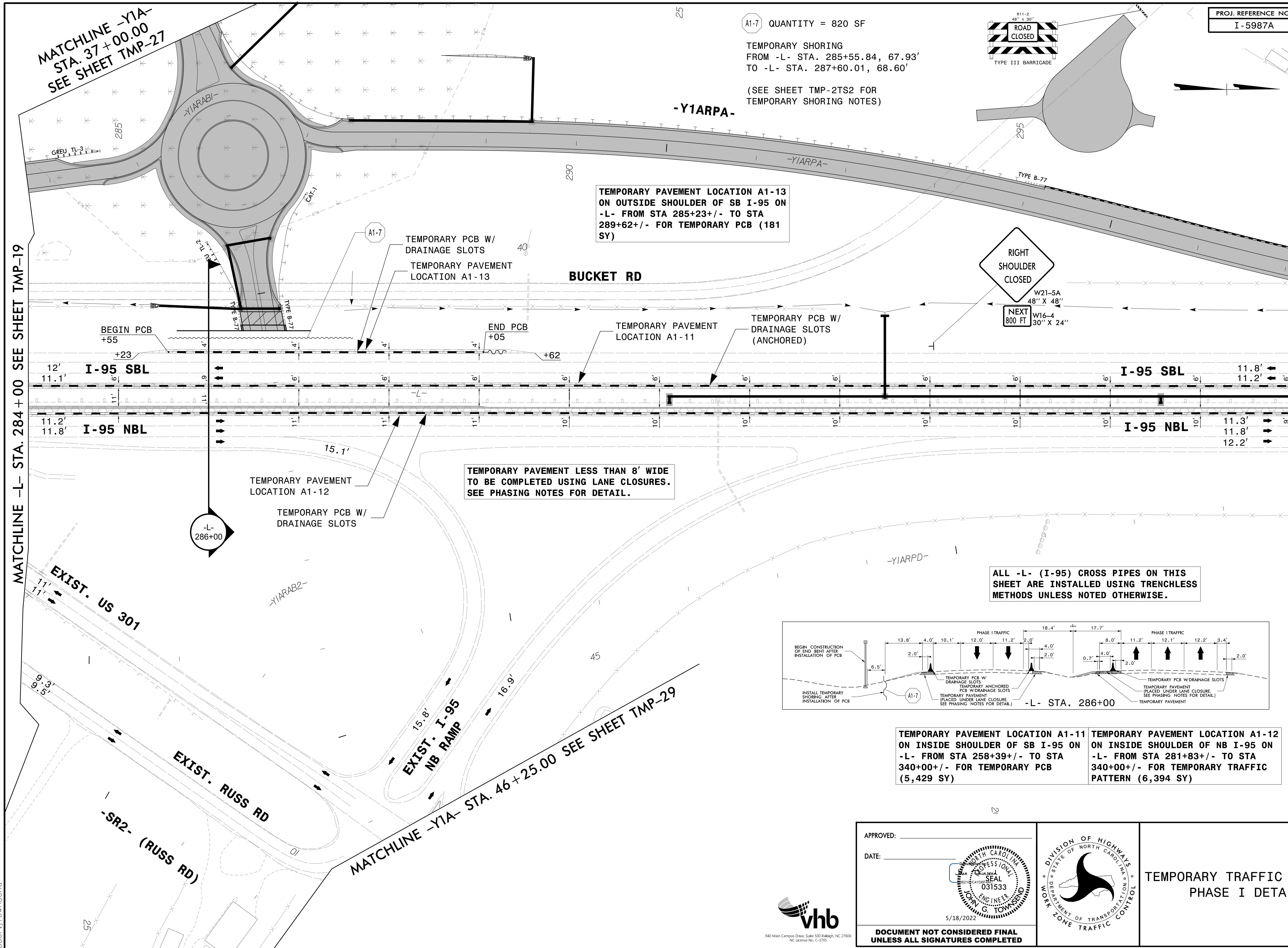
(SEE SHEET TMP-2TS2 FOR
TEMPORARY SHORING NOTES)



TEMPORARY PAVEMENT LOCATION A1-13
ON OUTSIDE SHOULDER OF SB I-95 ON
-L- FROM STA 285+23+/- TO STA
289+62+/- FOR TEMPORARY PCB (181
SY)

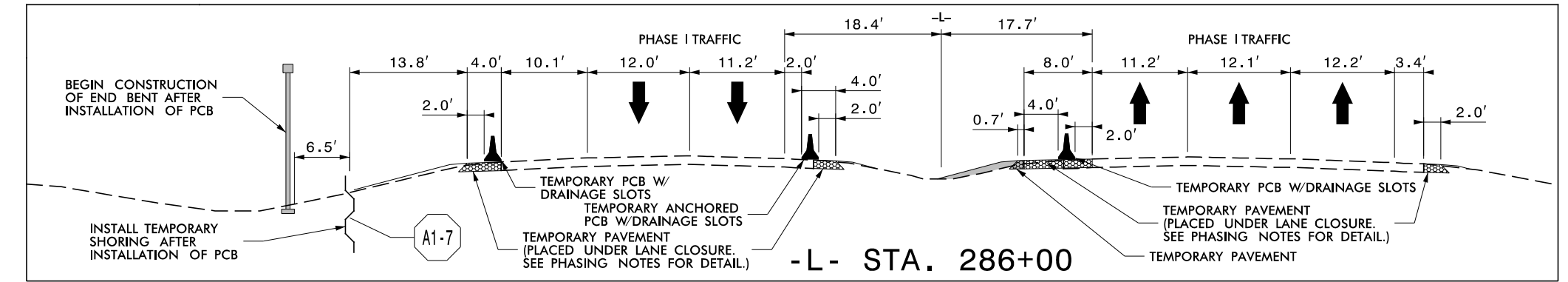
MATCHLINE -L- STA. 284+00 SEE SHEET TMP-19

MATCHLINE -L- STA. 298+00 SEE SHEET TMP-21



TEMPORARY PAVEMENT LESS THAN 8' WIDE
TO BE COMPLETED USING LANE CLOSURES.
SEE PHASING NOTES FOR DETAIL.

ALL -L- (I-95) CROSS PIPES ON THIS
SHEET ARE INSTALLED USING TRENCHLESS
METHODS UNLESS NOTED OTHERWISE.



TEMPORARY PAVEMENT LOCATION A1-11
ON INSIDE SHOULDER OF SB I-95 ON
-L- FROM STA 258+39+/- TO STA
340+00+/- FOR TEMPORARY PCB
(5,429 SY)

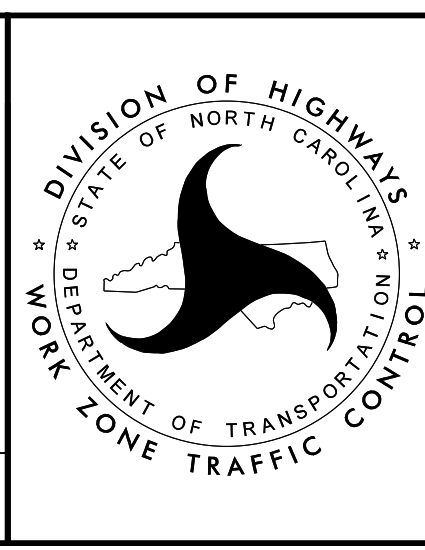
TEMPORARY PAVEMENT LOCATION A1-12
ON INSIDE SHOULDER OF NB I-95 ON
-L- FROM STA 281+83+/- TO STA
340+00+/- FOR TEMPORARY TRAFFIC
PATTERN (6,394 SY)

4/26/2022
R:\TrafficControl\TCP\B987a_tcp_secd_phase1.psd020.dgn
User:JHawnsend

APPROVED: _____
DATE: _____

5/18/2022

**DOCUMENT NOT CONSIDERED FINAL
UNLESS ALL SIGNATURES COMPLETED**



TEMPORARY TRAFFIC CONTROL
PHASE I DETAIL

