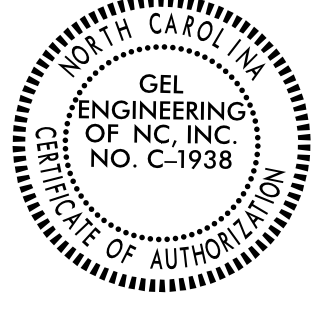

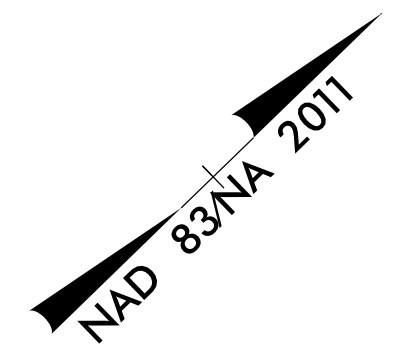


PROJECT REFERENCE NO. I-5987A	SHEET NO. RW-39
Location and Surveys	
GEL SOLUTIONS	
	



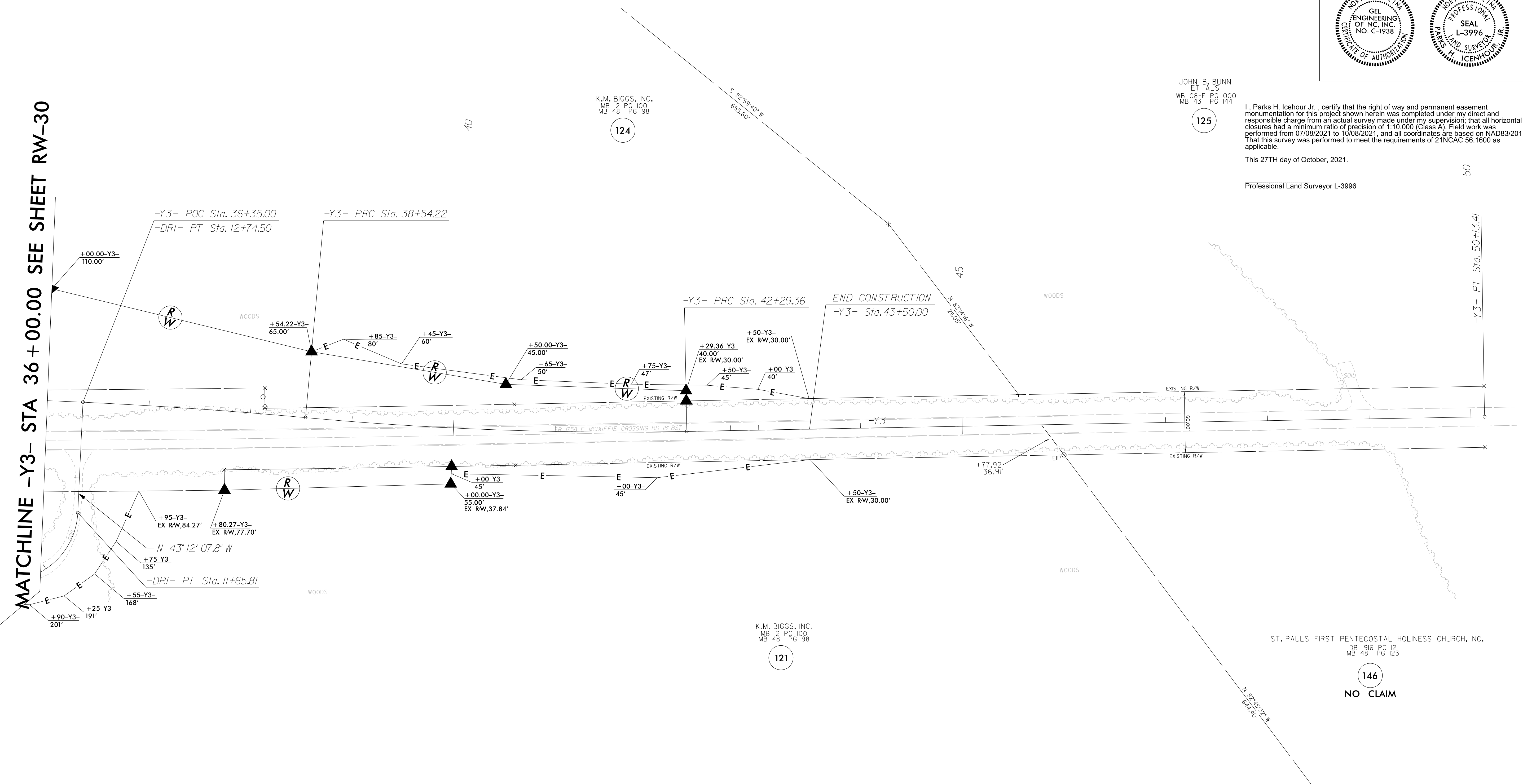
JOHN B. BUNN
E.T. ALS
WB 08-E PG 000
MB 43 PG 144

I, Parks H. Icehour Jr., certify that the right of way and permanent easement monumentation for this project shown herein was completed under my direct and responsible charge from an actual survey made under my supervision; that all horizontal closures had a minimum ratio of precision of 1:10,000 (Class A). Field work was performed from 07/08/2021 to 10/08/2021, and all coordinates are based on NAD83/2011; That this survey was performed to meet the requirements of 21NCAC 56.1600 as applicable.

This 27TH day of October, 2021.
Professional Land Surveyor L-3996

07-OCT-2021 17:53
 C:\p\proj\I5987A\ROW\From dot\revised\CADD_02 (3)\Pro\I5987A\I.s.rw39.dgn
 George Hart
 AT GEORGE

MATCHLINE -Y3- STA 36+00.00 SEE SHEET RW-30



-Y3-		-DRI-	
PI Sta 36+29.63	PI Sta 40+41.98	PI Sta 46+21.38	PI Sta 11+25.86
$\Delta = 5^{\circ}15'21.3''$ (RT)	$\Delta = 6^{\circ}20'25.3''$ (LT)	$\Delta = 0^{\circ}05'40.4''$ (RT)	$\Delta = 89^{\circ}09'07.8''$ (LT)
D = 1'10'09.5"	D = 1'41'24.5"	D = 0'00'43.4"	D = 81'51'04.0"
L = 449.49'	L = 375.14'	L = 784.05'	L = 108.92'
T = 224.90'	T = 187.76'	T = 392.03'	T = 68.97'
R = 4,900.00'	R = 3,390.00'	R = 475,060.14'	R = 70.00'
DS = 60 mph	DS = 60 mph	DS = EXIST	
e = 03	e = 04	e = NC	
RO = 75'	RO = 100'		

NOTES:

1. IF FURTHER INFORMATION REGARDING PROJECT CONTROL IS NEEDED PLEASE CONTACT THE LOCATION AND SURVEYS UNIT.
2. PROJECT CONTROL WAS ESTABLISHED USING GNSS, THE GLOBAL NAVIGATION SATELLITE SYSTEM.
3. RIGHT OF WAY MONUMENTATION ESTABLISHED 07/08/2021 TO 10/08/2021.

REVISIONS