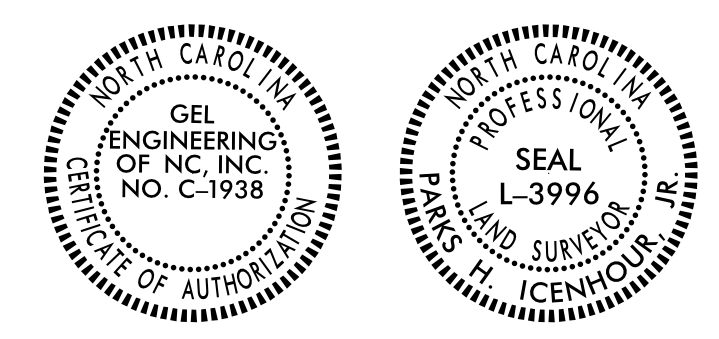
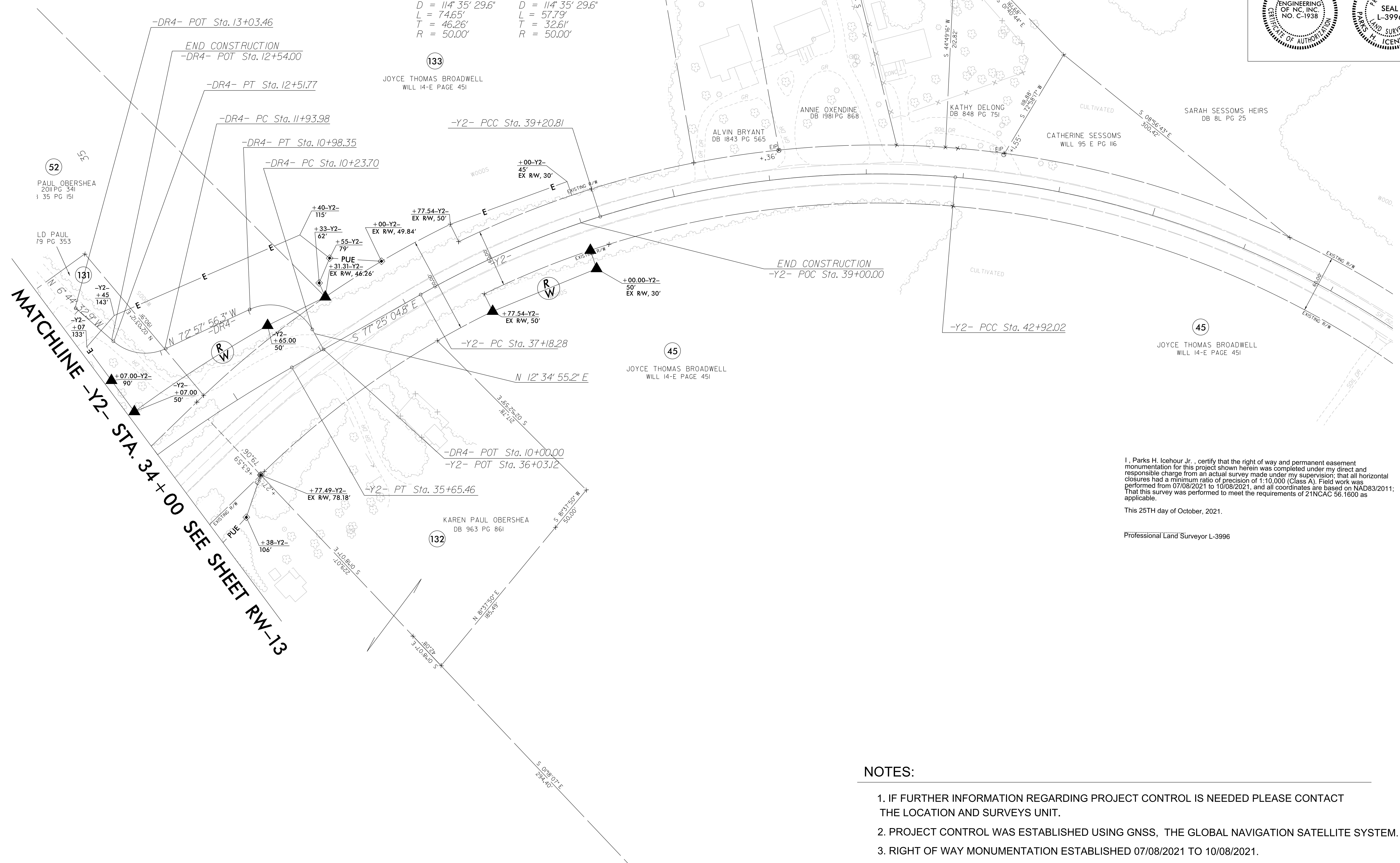


Location and Surveys



-Y2-			
PI Sta 33+89.51	PI Sta 38+19.92	PI Sta 41+08.78	PI Sta 45+71.93
$\Delta = 15^{\circ}15'02.8''$ (RT)	$\Delta = 12^{\circ}03'27.5''$ (RT)	$\Delta = 22^{\circ}14'07.1''$ (RT)	$\Delta = 32^{\circ}16'00.1''$ (RT)
D = 4'18'28.6"	D = 5'57'11.9"	D = 5'59'23.8"	D = 5'55'16.6"
L = 354.01'	L = 202.54'	L = 371.21'	L = 544.93'
T = 178.06'	T = 101.64'	T = 187.97'	T = 279.90'
R = 1,330.00'	R = 962.42'	R = 956.53'	R = 967.63'
DS = 60 mph	DS = EXIST.		
e = 06	e = EXIST.		
RO = 150.00'			

-DR4-	
PI Sta 10+69.95	PI Sta 12+26.59
$\Delta = 85^{\circ}32'51.4''$ (LT)	$\Delta = 66^{\circ}13'23.4''$ (RT)
D = 114'35'29.6"	D = 114'35'29.6"
L = 74.65'	L = 57.79'
T = 46.26'	T = 32.61'
R = 50.00'	R = 50.00'



REVISIONS

MATCHLINE -Y2- STA. 34+00 SEE SHEET RW-13

I, Parks H. Icehour Jr., certify that the right of way and permanent easement monumentation for this project shown herein was completed under my direct and responsible charge from an actual survey made under my supervision; that all horizontal closures had a minimum ratio of precision of 1:10,000 (Class A). Field work was performed from 07/08/2021 to 10/08/2021, and all coordinates are based on NAD83/2011; That this survey was performed to meet the requirements of 21NCAC 56.1600 as applicable.

This 25TH day of October, 2021.

Professional Land Surveyor L-3996

NOTES:

1. IF FURTHER INFORMATION REGARDING PROJECT CONTROL IS NEEDED PLEASE CONTACT THE LOCATION AND SURVEYS UNIT.
2. PROJECT CONTROL WAS ESTABLISHED USING GNSS, THE GLOBAL NAVIGATION SATELLITE SYSTEM.
3. RIGHT OF WAY MONUMENTATION ESTABLISHED 07/08/2021 TO 10/08/2021.

23-OCT-2021 15:56:03
 C:\Users\George.Hart\OneDrive\Documents\Projects\5987A\Drawings\15987A-1s-rw-34.dgn
 George Hart
 AT GEORGE