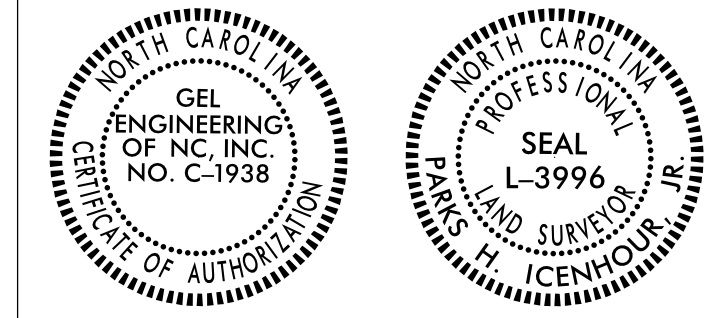


6/2/19

Location and Surveys



-L-
 PI Sta. 430+68.94
 $\Delta = 3^{\circ} 33' 35.7''$ (RT)
 $D = 0' 12' 03.7''$
 $L = 1,770.78'$
 $T = 885.67'$
 $R = 28,500.00'$
 $DS = 75$ mph
 $e = NC$

PALMETTO PROPERTIES, INC
DB 910 PG 351

JOSEPH G. RIDDLE
AND WIFE
GAIL A. RIDDLE
DB 1590 PG 865

118

120

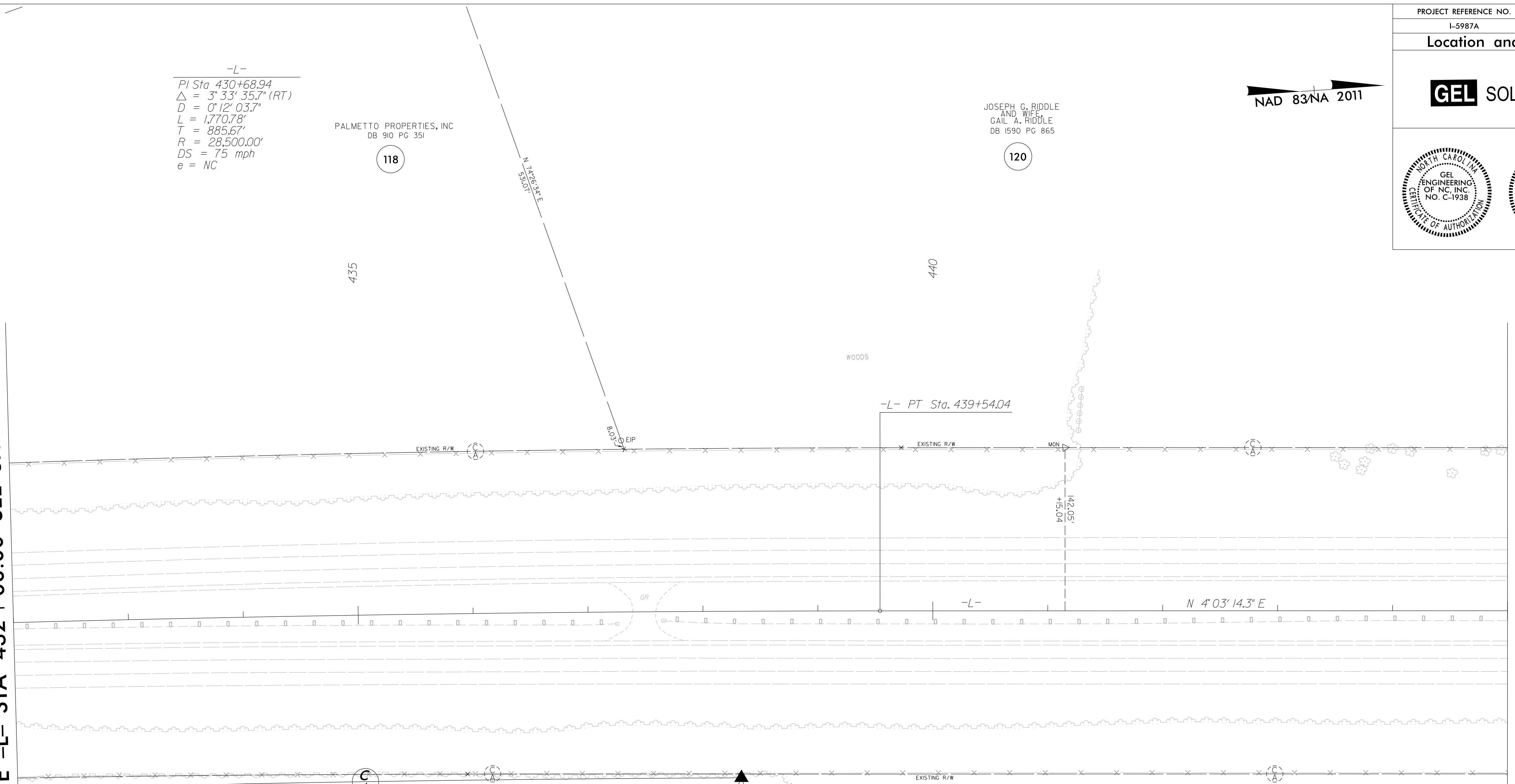
435

440

MATCHLINE -L- STA 432 + 00.00 SEE SHEET RW-27

MATCHLINE -L- STA 445 + 00.00 SEE SHEET RW-29

REVISIONS



I, Parks H. Icehour Jr., certify that the right of way and permanent easement monumentation for this project shown herein was completed under my direct and responsible charge from an actual survey made under my supervision; that all horizontal closures had a minimum ratio of precision of 1:10,000 (Class A). Field work was performed from 07/08/2021 to 10/08/2021, and all coordinates are based on NAD83/2011; That this survey was performed to meet the requirements of 21NCAC 56.1600 as applicable.

This 25TH day of October, 2021.

Professional Land Surveyor L-3996

JOSEPH G. RIDDLE
AND WIFE
GAIL A. RIDDLE
DB 1590 PG 865

119

NO CLAIM

GEORGE FRANK WHITE LIFE ESTATE
DB 13E PG 288
DB 1512 PG 531

116

NOTES:

1. IF FURTHER INFORMATION REGARDING PROJECT CONTROL IS NEEDED PLEASE CONTACT THE LOCATION AND SURVEYS UNIT.
2. PROJECT CONTROL WAS ESTABLISHED USING GNSS, THE GLOBAL NAVIGATION SATELLITE SYSTEM.
3. RIGHT OF WAY MONUMENTATION ESTABLISHED 07/08/2021 TO 10/08/2021.

23-OCT-2021 16:01
 C:\Users\George.Hart\OneDrive\Documents\Projects\5987A\ROW\From dot revised\CADD_02 (3)\Proj\15987A_Ls_rw28.dgn
 George Hart
 AT GEORGE