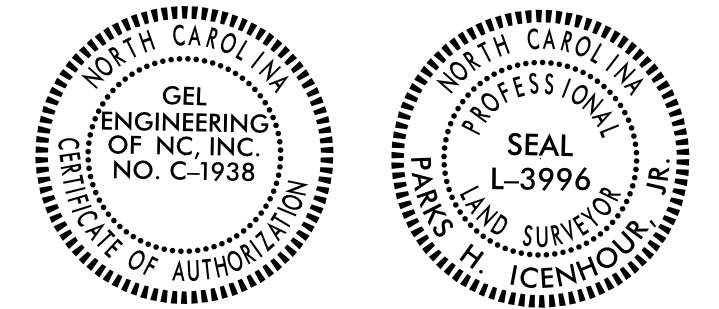


6/2/19

Location and Surveys



MARY JANE TUCKER HARRELL LIFE ESTATE
ET ALS
DB 1810 PG 336

117
NO CLAIM

-L-
PI Sta 430+68.94
 $\Delta = 3^{\circ} 33' 35.7''$ (RT)
 $D = 0^{\circ} 12' 03.7''$
 $L = 1,770.78'$
 $T = 885.67'$
 $R = 28,500.00'$
 $DS = 75$ mph
 $e = NC$

NAD 83/NA 2011

PALMETTO PROPERTIES, INC
DB 910 PG 351

118

I, Parks H. Icehour Jr., certify that the right of way and permanent easement monumentation for this project shown herein was completed under my direct and responsible charge from an actual survey made under my supervision; that all horizontal closures had a minimum ratio of precision of 1:10,000 (Class A). Field work was performed from 07/08/2021 to 10/08/2021, and all coordinates are based on NAD83/2011; That this survey was performed to meet the requirements of 21NCAC 58.1600 as applicable.

This 22nd day of February, 2022.

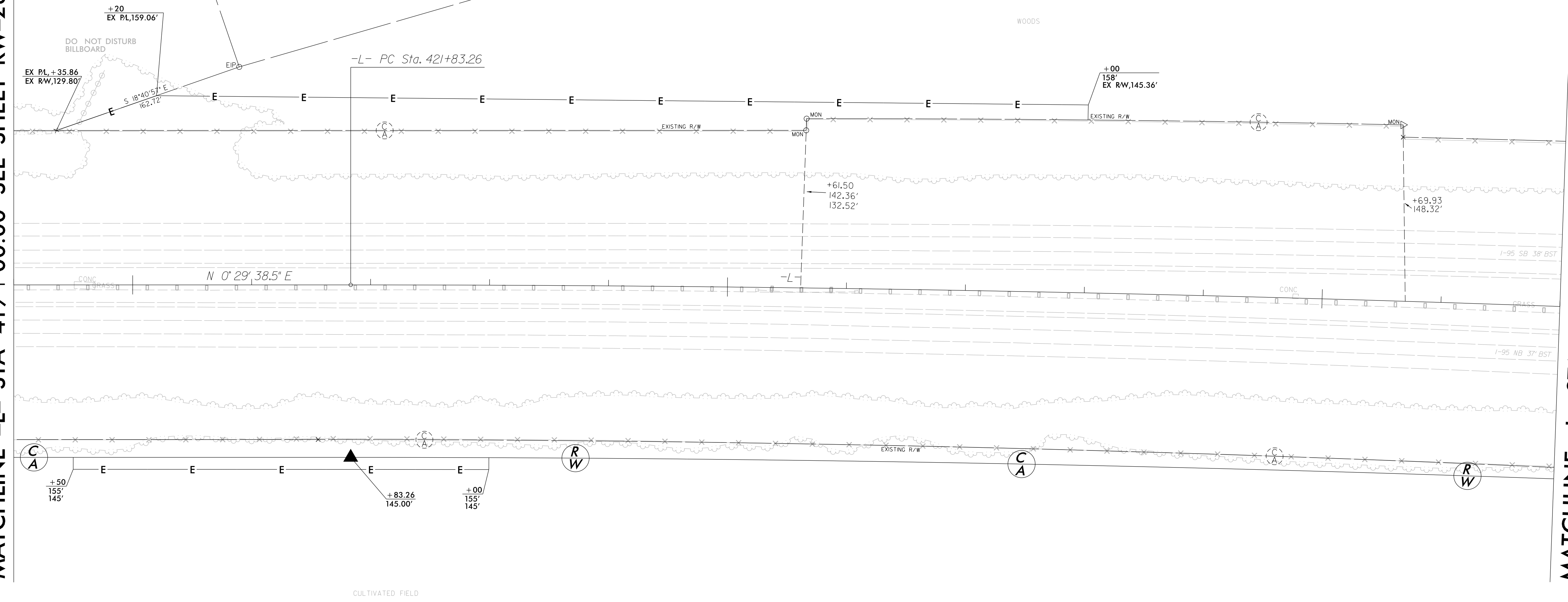
Professional Land Surveyor L-3996

JOSEPH G. RIDDLE
AND WIFE
GAIL A. RIDDLE
DB 1590 PG 854

114

MATCHLINE -L- STA 419 + 00.00 SEE SHEET RW-26

MATCHLINE -L- STA 432 + 00.00 SEE SHEET RW-28



REVISIONS

22-FEB-2022 07:13
C:\p\c\proj\5987\ROW\Frm dot revised\George Hart -GEG
George Hart

GEORGE FRANK WHITE LIFE ESTATE
DB 13E PG 238
DB 152 PG 238
DB 175 PG 327

116

NOTES:

1. IF FURTHER INFORMATION REGARDING PROJECT CONTROL IS NEEDED PLEASE CONTACT THE LOCATION AND SURVEYS UNIT.
2. PROJECT CONTROL WAS ESTABLISHED USING GNSS, THE GLOBAL NAVIGATION SATELLITE SYSTEM.
3. RIGHT OF WAY MONUMENTATION ESTABLISHED 07/08/2021 TO 10/08/2021.