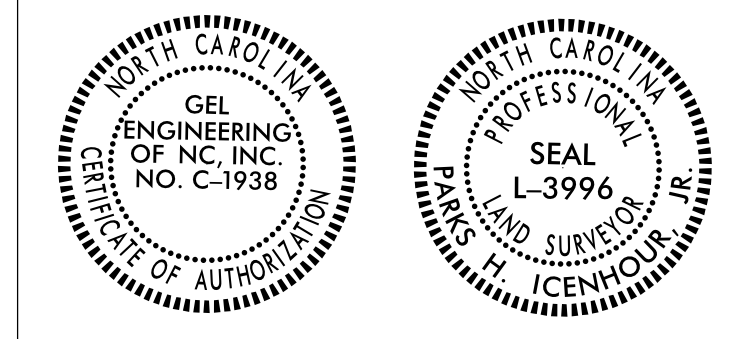


Location and Surveys



JOSEPH G. RIDDLE  
AND WIFE  
GAIL A. RIDDLE  
DB 1590 PG 854

114

I, Parks H. Icehour Jr., certify that the right of way and permanent easement monumentation for this project shown herein was completed under my direct and responsible charge from an actual survey made under my supervision; that all horizontal closures had a minimum ratio of precision of 1:10,000 (Class A). Field work was performed from 07/08/2021 to 10/08/2021, and all coordinates are based on NAD83/2011; That this survey was performed to meet the requirements of 21NCAC 56.1600 as applicable.

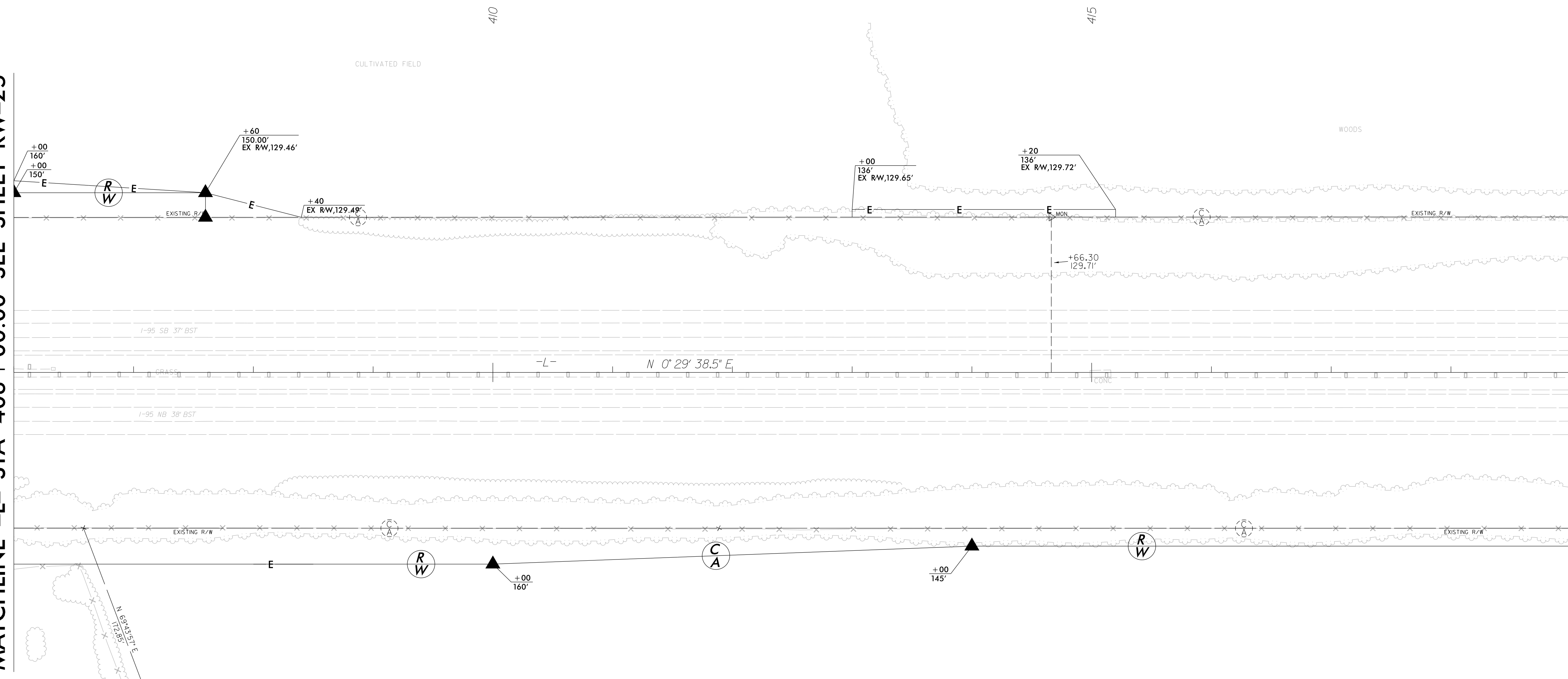
This 22nd day of February, 2022.

Professional Land Surveyor L-3996

REVISIONS

MATCHLINE -L- STA 406 + 00.00 SEE SHEET RW-25

MATCHLINE -L- STA 419 + 00.00 SEE SHEET RW-27



RAYMOND W. JONES  
AND WIFE  
MYRA W. JONES  
DB 1359 PG 85

113

GEORGE FRANK WHITE LIFE ESTATE  
DB 135 PG 288  
DB 152 PG 531  
DB 175 PG 327

116

NOTES:

1. IF FURTHER INFORMATION REGARDING PROJECT CONTROL IS NEEDED PLEASE CONTACT THE LOCATION AND SURVEYS UNIT.
2. PROJECT CONTROL WAS ESTABLISHED USING GNSS, THE GLOBAL NAVIGATION SATELLITE SYSTEM.
3. RIGHT OF WAY MONUMENTATION ESTABLISHED 07/08/2021 TO 10/08/2021.

22-FEB-2022 06:53  
 C:\p\2022\15987\ROW\From dot\revised\15987A\_1s\_rw26.dgn  
 George Hart AT GEORGEHART-GEC