

6/2/09

22-FEB-2022 06:54 C:\p\c\proj\5987\ROW\From dot\revised\George Hart - George Hart - AT GEORGE HART - GEG dot\revised\few sheets revised for chad on 2-22-2022\Proj\5987A\ls_rw24.dgn

PROJECT REFERENCE NO. L-5987A	SHEET NO. RW-24
Location and Surveys	
GEL SOLUTIONS	

NAD 83/NA 2011

MATCHLINE -L- STA 380 + 00.00 SEE SHEET RW-24

MATCHLINE -L- STA 393 + 00.00 SEE SHEET RW-25

ROBERT A. RUSS
DB 959 PG 223

105

KAREN I. EVANS
DB 1886 PG 363

109

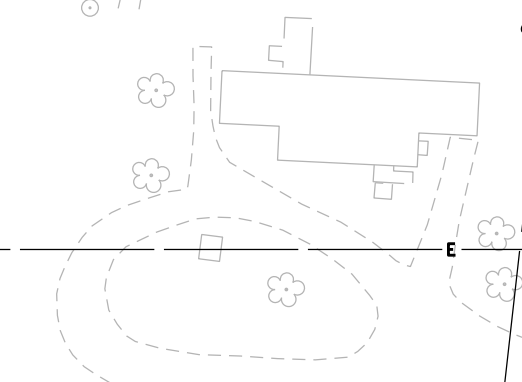
DAVID C. WHITE
ET. ALS
DB 931 PG 410
WB 13-E PG 346

111

NEAL C. RUSS
DB 959 PG 225

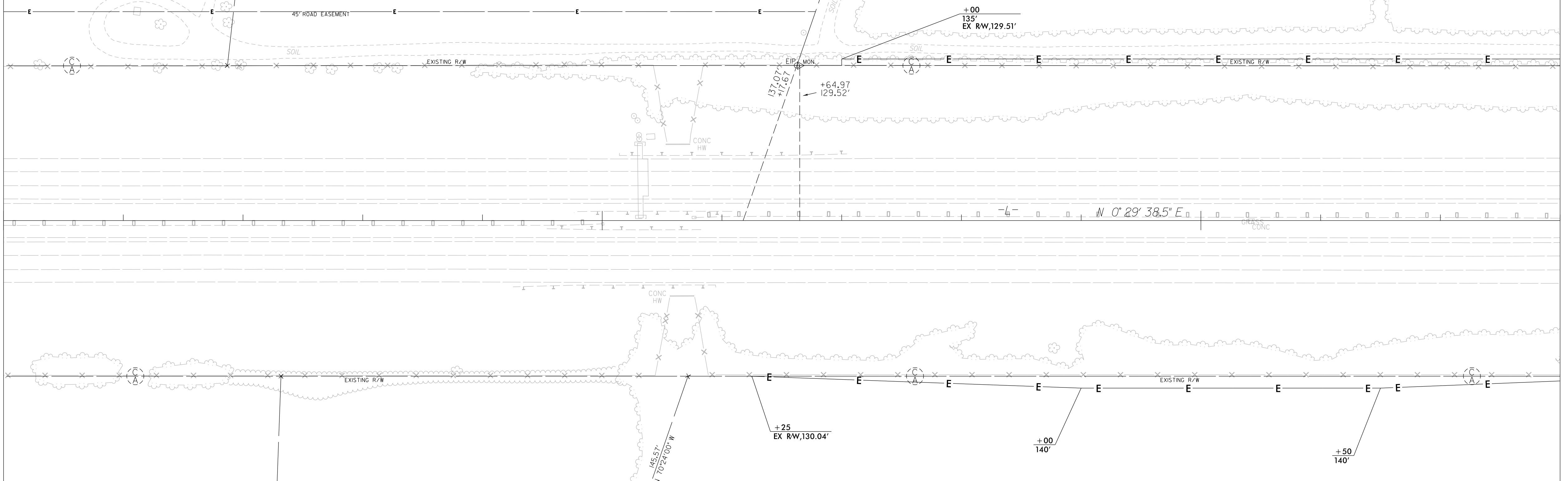
106

NO CLAIM



CULTIVATED FIELD

WOODS



CULTIVATED FIELD

WOODS

NEILL D. FOWLER
DB 784 PG 350
WB 15-E PG 228

107

NO CLAIM

SHIRLEY M. WARD
WB 92-E PG 266
DB 784 PG 360

108

FRANKLIN C. MELVIN
AND WIFE
GENEVIEVE C. MELVIN
DB 1499 PG 537

110

NOTES:

1. IF FURTHER INFORMATION REGARDING PROJECT CONTROL IS NEEDED PLEASE CONTACT THE LOCATION AND SURVEYS UNIT.
2. PROJECT CONTROL WAS ESTABLISHED USING GNSS, THE GLOBAL NAVIGATION SATELLITE SYSTEM.
3. RIGHT OF WAY MONUMENTATION ESTABLISHED 07/08/2021 TO 10/08/2021.

I, Parks H. Icehour Jr., certify that the right of way and permanent easement monumentation for this project shown herein was completed under my direct and responsible charge from an actual survey made under my supervision; that all horizontal closures had a minimum ratio of precision of 1:10,000 (Class A). Field work was performed from 07/08/2021 to 10/08/2021, and all coordinates are based on NAD83/2011; That this survey was performed to meet the requirements of 21NCAC 56.1600 as applicable.

This 22nd day of February 2022.

Professional Land Surveyor L-3996