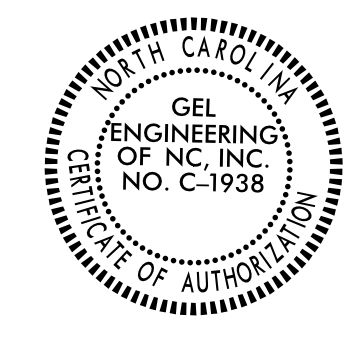


Location and Surveys



NAD 83/NA 2011

CAROL POWERS LIFE ESTATE
 DB 590 PG 363
 WB 11-E PG 632
 99
 NO CLAIM

THAD J. DAVIS
 AND WIFE,
 CHERYL J. DAVIS
 DB 1841 PG 734
 MB 42 PG 140
 102

I, Parks H. Icehour Jr., certify that the right of way and permanent easement monumentation for this project shown herein was completed under my direct and responsible charge from an actual survey made under my supervision; that all horizontal closures had a minimum ratio of precision of 1:10,000 (Class A). Field work was performed from 07/08/2021 to 10/08/2021, and all coordinates are based on NAD83/2011; That this survey was performed to meet the requirements of 21NCAC 56.1600 as applicable.
 This 25TH day of October, 2021.

Professional Land Surveyor L-3996

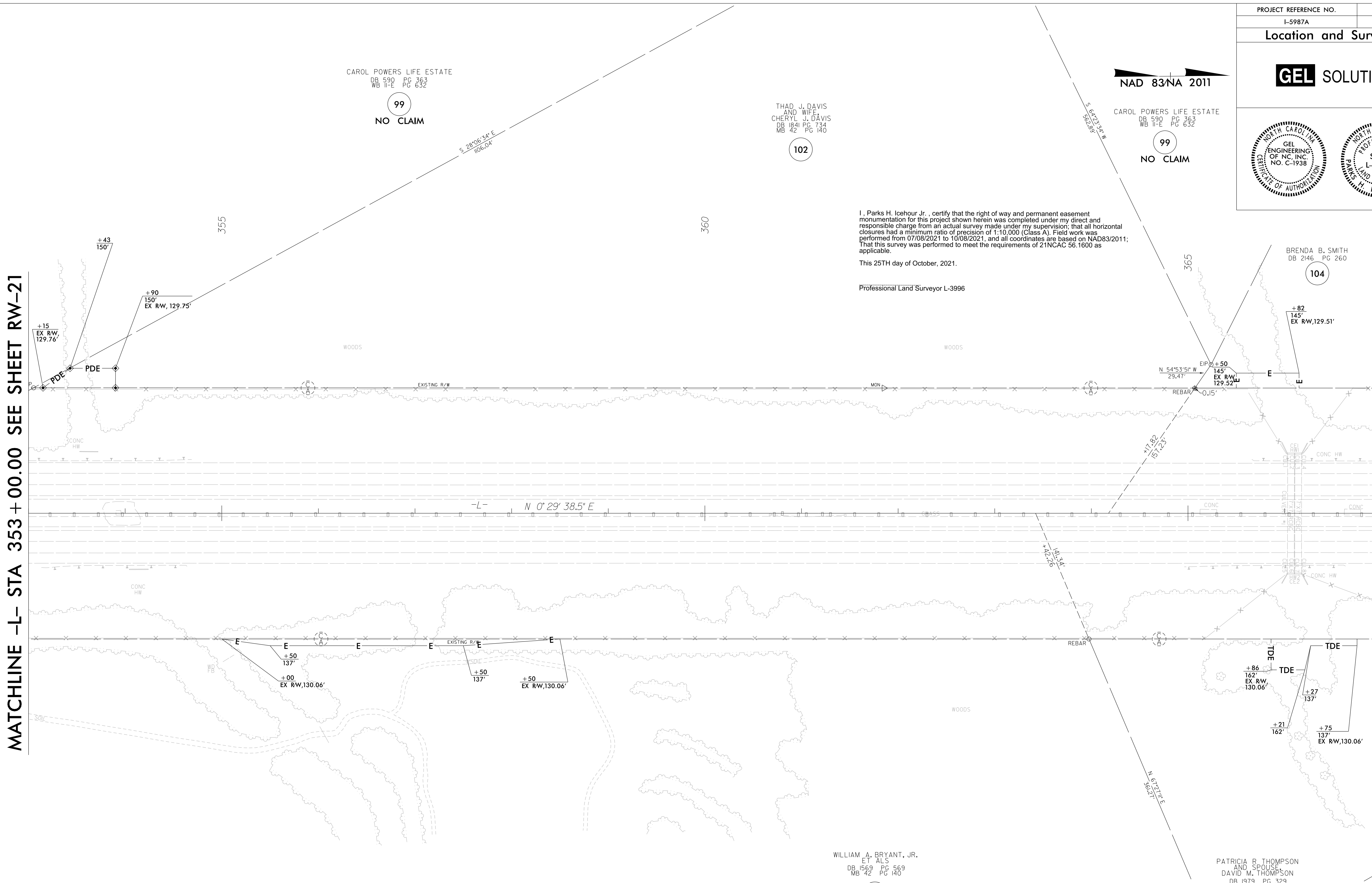
BRENDA B. SMITH
 DB 2146 PG 260
 104

WILLIAM A. BRYANT, JR.
 ET ALS
 DB 1569 PG 569
 MB 42 PG 140
 101

PATRICIA R THOMPSON
 AND SPOUSE
 DAVID M. THOMPSON
 DB 1979 PG 329
 103

MATCHLINE -L- STA 353 + 00.00 SEE SHEET RW-21

MATCHLINE -L- STA 367 + 00.00 SEE SHEET RW-23



NOTES:

1. IF FURTHER INFORMATION REGARDING PROJECT CONTROL IS NEEDED PLEASE CONTACT THE LOCATION AND SURVEYS UNIT.
2. PROJECT CONTROL WAS ESTABLISHED USING GNSS, THE GLOBAL NAVIGATION SATELLITE SYSTEM.
3. RIGHT OF WAY MONUMENTATION ESTABLISHED 07/08/2021 TO 10/08/2021.

REVISIONS

23-OCT-2021 16:10
 C:\Users\George_Hart\OneDrive\Documents\Projects\15987A\15987A-1.s_rw22.dgn
 George_Hart