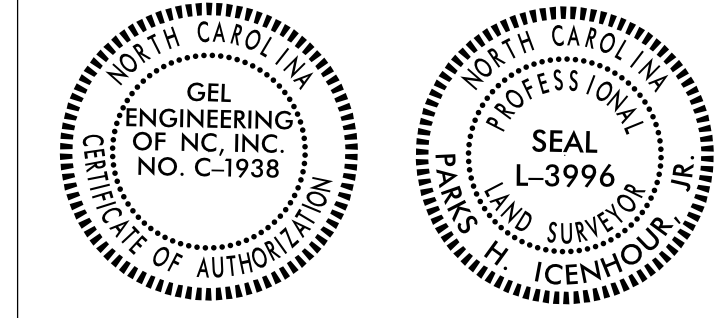


Location and Surveys



CAROL POWERS LIFE ESTATE
DB 590 PG 363
WB 11-E PG 652

99
NO CLAIM

NAD 83/NA 2011

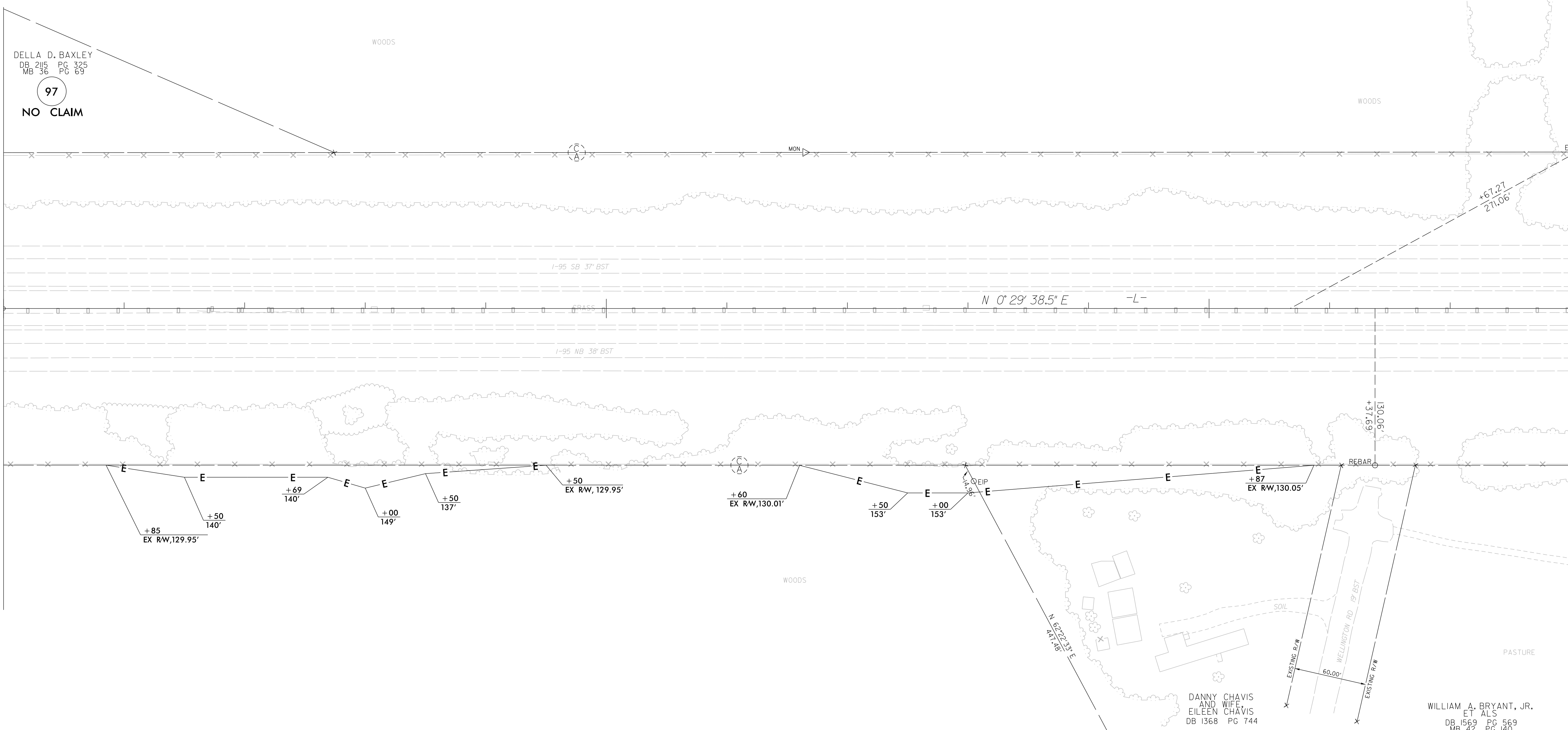
I, Parks H. Icehour Jr., certify that the right of way and permanent easement monumentation for this project shown herein was completed under my direct and responsible charge from an actual survey made under my supervision; that all horizontal closures had a minimum ratio of precision of 1:10,000 (Class A). Field work was performed from 07/08/2021 to 10/08/2021, and all coordinates are based on NAD83/2011; That this survey was performed to meet the requirements of 21NCAC 56.1600 as applicable.

This 25TH day of October, 2021.

Professional Land Surveyor L-3996

MATCHLINE -L- STA 340 + 00.00 SEE SHEET RW-20

MATCHLINE -L- STA 353 + 00.00 SEE SHEET RW-22



DELLA D. BAXLEY
DB 215 PG 325
MB 36 PG 69
97
NO CLAIM

DELLA D. BAXLEY
DB 215 PG 325
MB 36 PG 69

98

NOTES:

1. IF FURTHER INFORMATION REGARDING PROJECT CONTROL IS NEEDED PLEASE CONTACT THE LOCATION AND SURVEYS UNIT.
2. PROJECT CONTROL WAS ESTABLISHED USING GNSS, THE GLOBAL NAVIGATION SATELLITE SYSTEM.
3. RIGHT OF WAY MONUMENTATION ESTABLISHED 07/08/2021 TO 10/08/2021.

DANNY CHAVIS AND WIFE EILEEN CHAVIS
DB 1368 PG 744

100

WILLIAM A. BRYANT, JR. ET ALS
DB 1569 PG 569
MB 42 PG 140

101

REVISIONS

C:\Users\George.Hart\AppData\Local\Temp\15987A\15987A-1.s_rw21.dgn
George.Hart