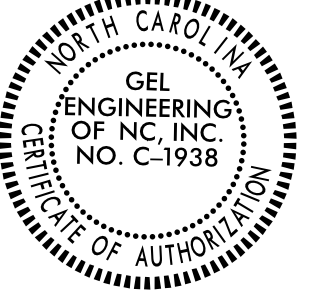



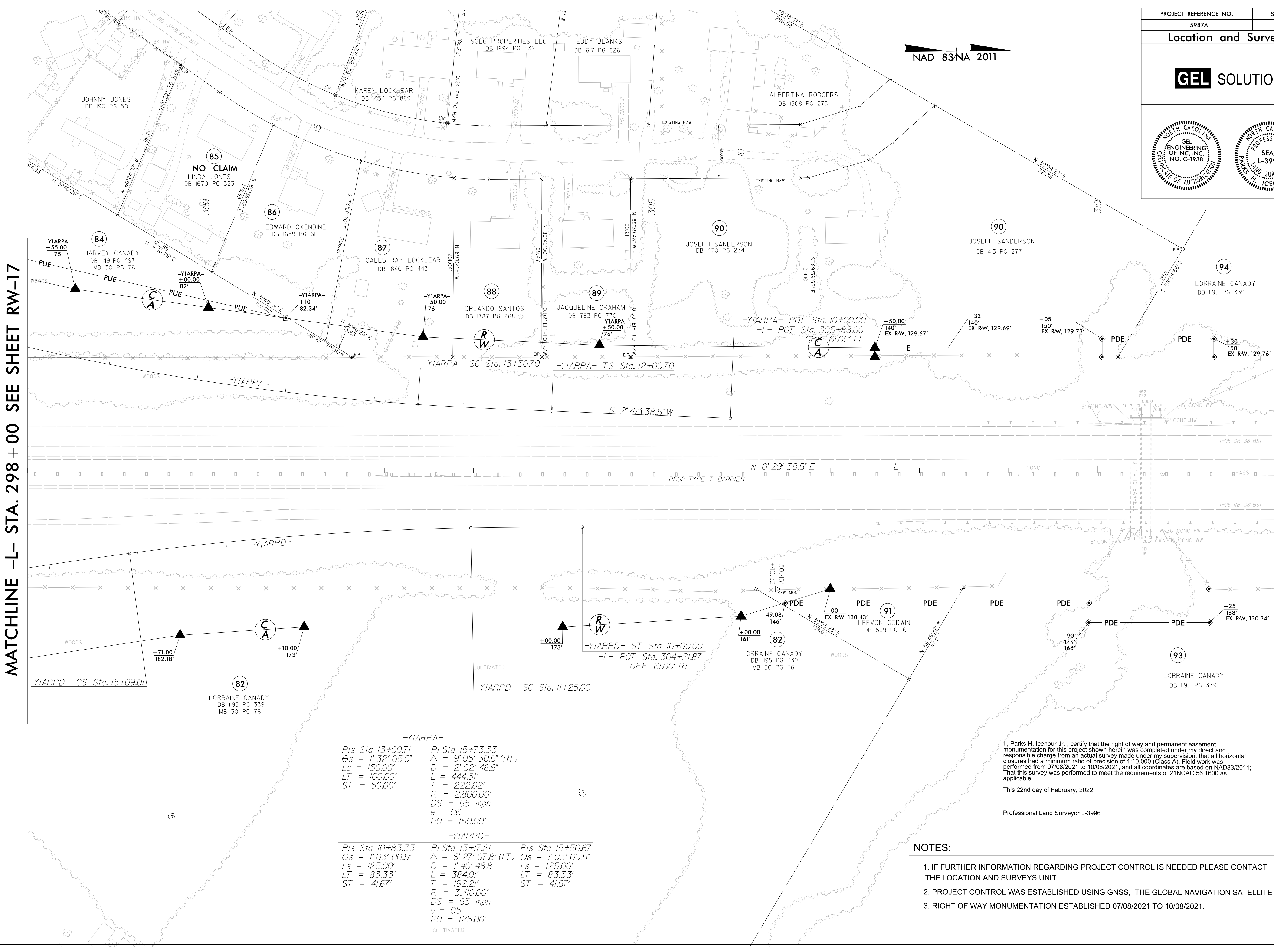
6/2/19

PROJECT REFERENCE NO. L-5987A	SHEET NO. RW-18
<b>Location and Surveys</b>	
<b>GEL SOLUTIONS</b>	
	

NAD 83/NA 2011

MATCHLINE -L- STA. 298 + 00 SEE SHEET RW-17

MATCHLINE -L- STA. 312 + 00 SEE SHEET RW-19



REVISIONS

22-FEB-2022 06:55  
 C:\p\5987A\ROW\Frm dot(revised)\few sheets revised for chad on 2-22-2022\Proj\5987A\ls\_rwl8.dgn  
 George Hart AT GEORGEHART-GEC

-YIARPA-		
Pls Sta 13+00.71	PI Sta 15+73.33	
$\Theta s = 1^{\circ} 32' 05.0''$	$\Delta = 9^{\circ} 05' 30.6'' (RT)$	
$Ls = 150.00'$	$D = 2^{\circ} 02' 46.6''$	
$LT = 100.00'$	$L = 444.31'$	
$ST = 50.00'$	$T = 222.62'$	
	$R = 2,800.00'$	
	$DS = 65 \text{ mph}$	
	$e = 06$	
	$RO = 150.00'$	
-YIARPD-		
Pls Sta 10+83.33	PI Sta 13+17.21	Pls Sta 15+50.67
$\Theta s = 1^{\circ} 03' 00.5''$	$\Delta = 6^{\circ} 27' 07.8'' (LT)$	$\Theta s = 1^{\circ} 03' 00.5''$
$Ls = 125.00'$	$D = 1^{\circ} 40' 48.8''$	$Ls = 125.00'$
$LT = 83.33'$	$L = 384.01'$	$LT = 83.33'$
$ST = 41.67'$	$T = 192.21'$	$ST = 41.67'$
	$R = 3,410.00'$	
	$DS = 65 \text{ mph}$	
	$e = 05$	
	$RO = 125.00'$	
CULTIVATED		

I, Parks H. Icehour Jr., certify that the right of way and permanent easement monumentation for this project shown herein was completed under my direct and responsible charge from an actual survey made under my supervision; that all horizontal closures had a minimum ratio of precision of 1:10,000 (Class A). Field work was performed from 07/08/2021 to 10/08/2021, and all coordinates are based on NAD83/2011; That this survey was performed to meet the requirements of 21NCAC 56.1600 as applicable.

This 22nd day of February, 2022.

Professional Land Surveyor L-3996

- NOTES:**
1. IF FURTHER INFORMATION REGARDING PROJECT CONTROL IS NEEDED PLEASE CONTACT THE LOCATION AND SURVEYS UNIT.
  2. PROJECT CONTROL WAS ESTABLISHED USING GNSS, THE GLOBAL NAVIGATION SATELLITE SYSTEM.
  3. RIGHT OF WAY MONUMENTATION ESTABLISHED 07/08/2021 TO 10/08/2021.