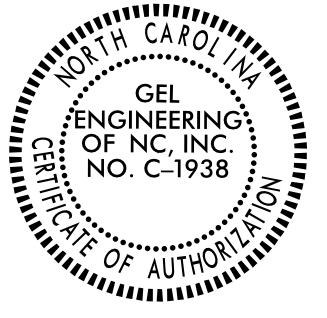




I, Parks H. Icehour Jr., certify that the right of way and permanent easement monumentation for this project shown herein was completed under my direct and responsible charge from an actual survey made under my supervision; that all horizontal closures had a minimum ratio of precision of 1:10,000 (Class A). Field work was performed from 07/08/2021 to 10/08/2021, and all coordinates are based on NAD83/2011; That this survey was performed to meet the requirements of 21NCAC 56.1600 as applicable.

This 25TH day of October, 2021.

Professional Land Surveyor L-3996



MATCHLINE -L- STA. 243 + 00 SEE SHEET RW-14

MATCHLINE -L- STA. 256 + 00 SEE SHEET RW-16

-WSRPA- ST Sta. 10+00.00  
 -L- POT Sta. 243+07.54  
 OFF 61.00' LT

COUNTY OF ROBESON  
 DB 429 PG 205

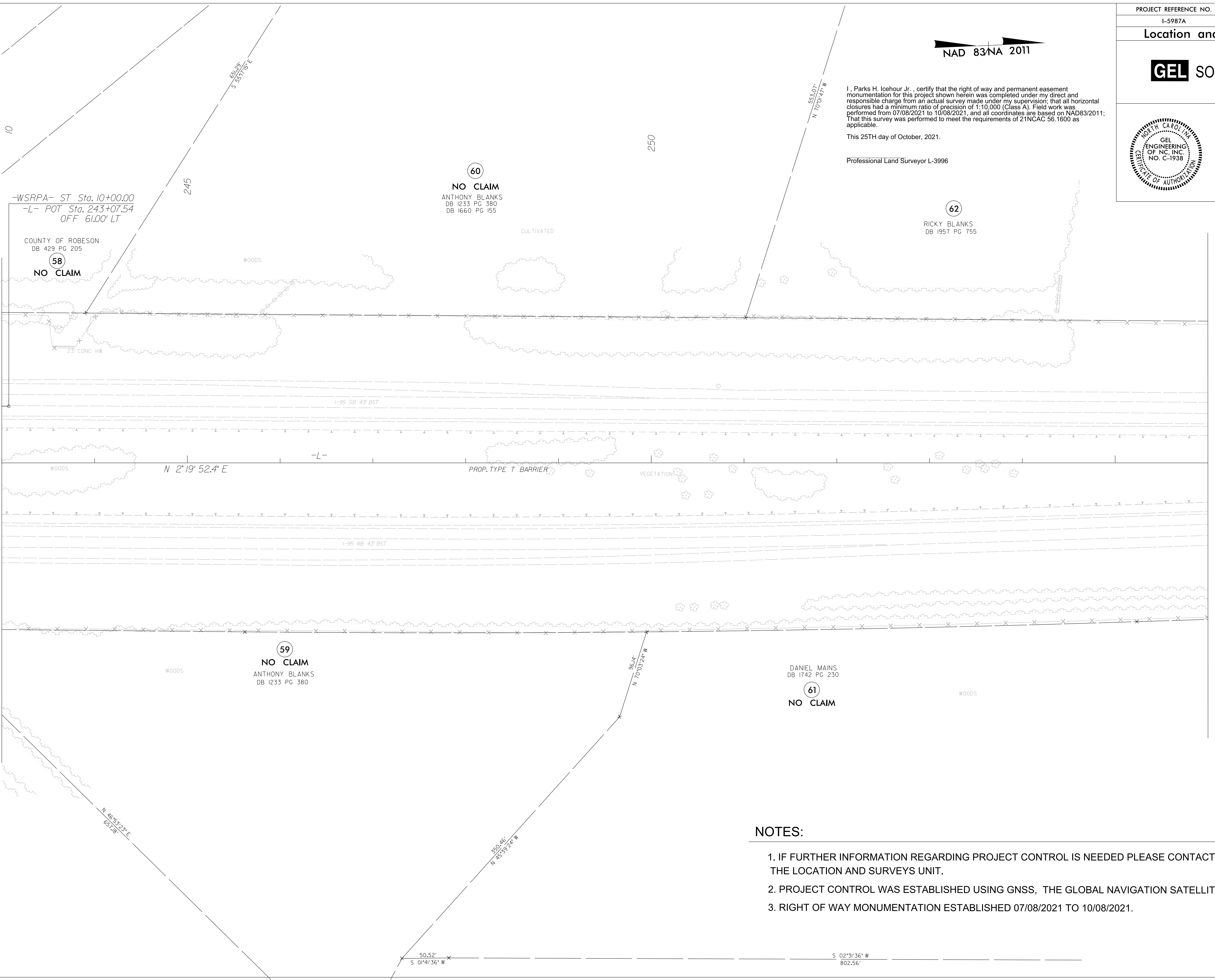
(58)  
 NO CLAIM

(60)  
 NO CLAIM  
 ANTHONY BLANKS  
 DB 1233 PG 380  
 DB 1660 PG 155

(62)  
 RICKY BLANKS  
 DB 1957 PG 155

(59)  
 NO CLAIM  
 ANTHONY BLANKS  
 DB 1233 PG 380

DANIEL MAINS  
 DB 1742 PG 230  
 (61)  
 NO CLAIM



REVISIONS

C:\Users\George.Hart\OneDrive\Documents\Projects\I-5987A\I-5987A-15.rw15.dgn  
 George Hart  
 27-OCT-2021 16:18

**NOTES:**

1. IF FURTHER INFORMATION REGARDING PROJECT CONTROL IS NEEDED PLEASE CONTACT THE LOCATION AND SURVEYS UNIT.
2. PROJECT CONTROL WAS ESTABLISHED USING GNSS, THE GLOBAL NAVIGATION SATELLITE SYSTEM.
3. RIGHT OF WAY MONUMENTATION ESTABLISHED 07/08/2021 TO 10/08/2021.