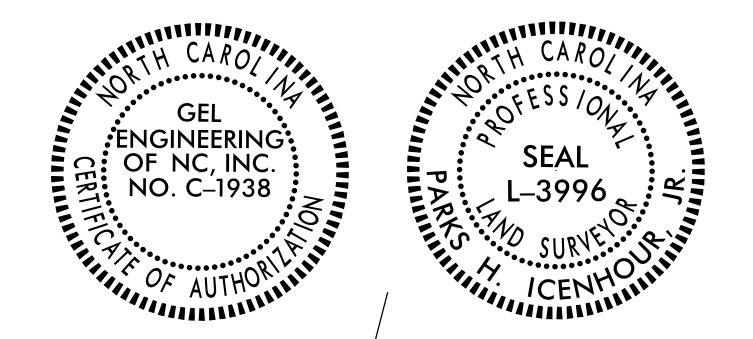


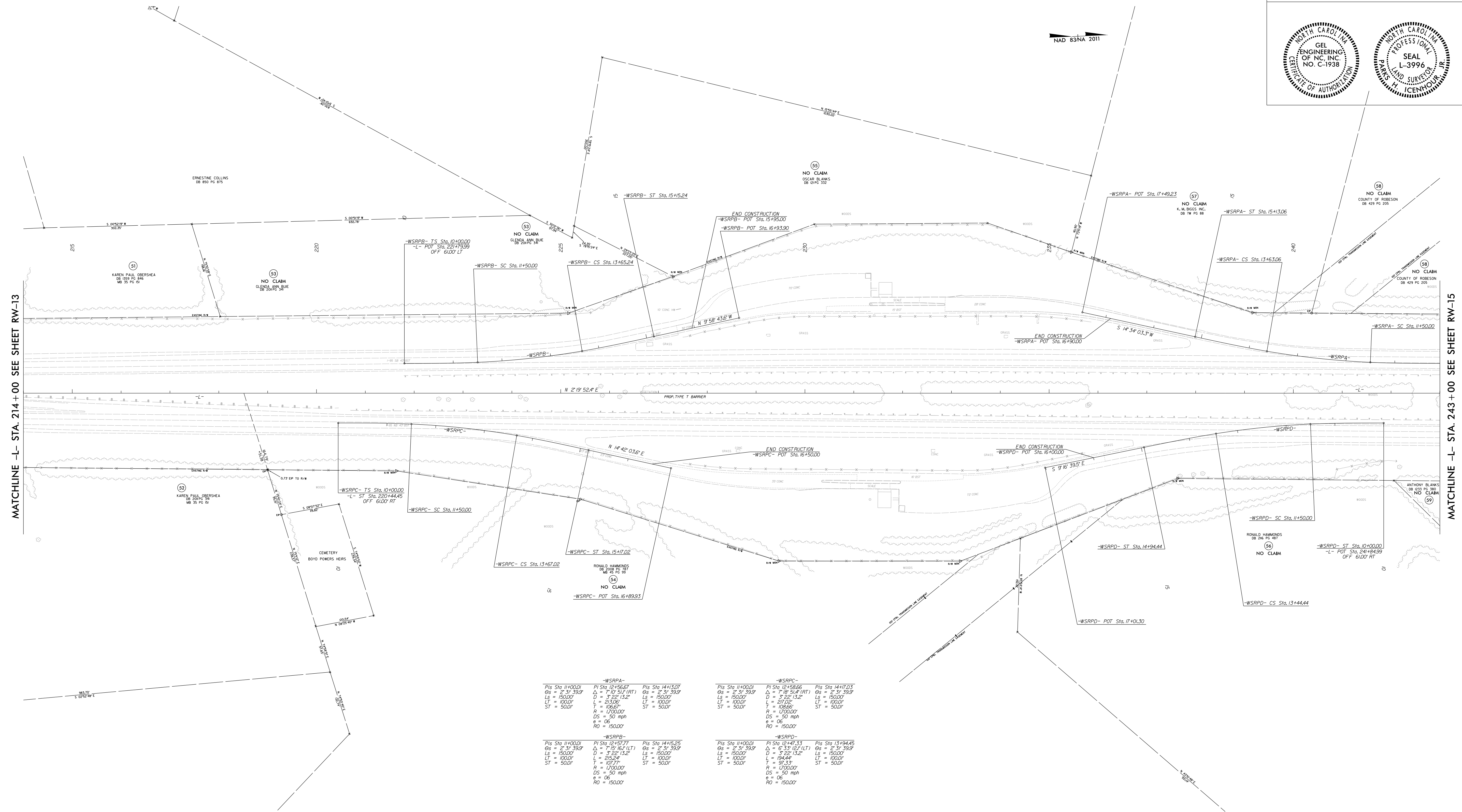
Location and Surveys



I, Parks H. Icehour Jr., certify that the right of way and permanent easement monumentation for this project shown herein was completed under my direct and responsible charge from an actual survey made under my supervision; that all horizontal closures had a minimum ratio of precision of 1:10,000 (Class A). Field work was performed from 07/08/2021 to 10/08/2021, and all coordinates are based on NAD83/2011. That this survey was performed to meet the requirements of 21NCAC 56.1600 as applicable.

This 25TH day of October, 2021.

Professional Land Surveyor L-3996



-WSRPA-				-WSRPC-			
Pls Sta 11+00.00	PI Sta 12+56.67	Pls Sta 14+13.07	Pls Sta 11+00.00	PI Sta 12+58.66	Pls Sta 14+17.03		
Es = 2' 3" 39.5'	Δ = 7' 10" 51.1' (RT)	Es = 2' 3" 39.5'	Es = 2' 3" 39.5'	Δ = 7' 10" 51.1' (RT)	Es = 2' 3" 39.5'		
Ls = 150.00'	D = 3' 52" 13.2"	Ls = 150.00'	Ls = 150.00'	D = 3' 52" 13.2"	Ls = 150.00'		
LT = 100.00'	L = 215.06'	LT = 100.00'	LT = 100.00'	L = 215.06'	LT = 100.00'		
ST = 50.00'	T = 106.67'	ST = 50.00'	ST = 50.00'	T = 106.67'	ST = 50.00'		
	R = 1700.00'		R = 1700.00'		R = 1700.00'		
	DS = 50 mph		DS = 50 mph		DS = 50 mph		
	e = 06		e = 06		e = 06		
	RO = 150.00'		RO = 150.00'		RO = 150.00'		

-WSRPB-				-WSRPD-			
Pls Sta 11+00.00	PI Sta 12+57.77	Pls Sta 14+15.25	Pls Sta 11+00.00	PI Sta 12+47.33	Pls Sta 13+94.45		
Es = 2' 3" 39.5'	Δ = 7' 15" 16.1' (LT)	Es = 2' 3" 39.5'	Es = 2' 3" 39.5'	Δ = 6' 53" 52.1' (LT)	Es = 2' 3" 39.5'		
Ls = 150.00'	D = 3' 52" 13.2"	Ls = 150.00'	Ls = 150.00'	D = 3' 52" 13.2"	Ls = 150.00'		
LT = 100.00'	L = 216.58'	LT = 100.00'	LT = 100.00'	L = 216.58'	LT = 100.00'		
ST = 50.00'	T = 107.71'	ST = 50.00'	ST = 50.00'	T = 97.33'	ST = 50.00'		
	R = 1700.00'		R = 1700.00'		R = 1700.00'		
	DS = 50 mph		DS = 50 mph		DS = 50 mph		
	e = 06		e = 06		e = 06		
	RO = 150.00'		RO = 150.00'		RO = 150.00'		

NOTES:

- IF FURTHER INFORMATION REGARDING PROJECT CONTROL IS NEEDED, PLEASE CONTACT THE LOCATION AND SURVEYS UNIT.
- PROJECT CONTROL WAS ESTABLISHED USING GNSS, THE GLOBAL NAVIGATION SATELLITE SYSTEM.
- RIGHT OF WAY MONUMENTATION ESTABLISHED FROM 07/08/2021 TO 10/08/2021.

REVISIONS

MATCHLINE -L- STA. 214 + 00 SEE SHEET RW-13

MATCHLINE -L- STA. 243 + 00 SEE SHEET RW-15

C:\Users\George.Hart\OneDrive\Documents\Projects\I-5987A\I-5987A_ROW\Fr.om dot\revised\CADD_02 (3)\I-5987A_I.s.rw14.dgn