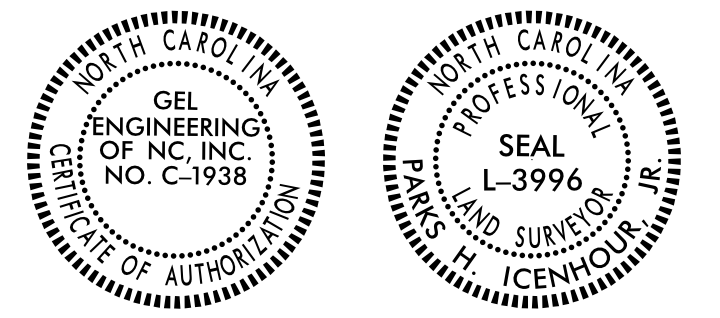
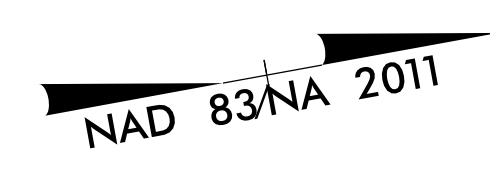


Location and Surveys



-L-  
 Pls Sta 172+62.41 PI Sta 180+96.63  
 $\Theta_s = 0^\circ 44' 38.8''$   $\Delta = 1^\circ 23' 06.4''$  (LT)  
 $L_s = 200.00'$   $D = 0^\circ 44' 38.8''$   
 $LT = 133.33'$   $L = 1,530.05'$   
 $ST = 66.67'$   $T = 767.55'$   
 $R = 7,700.00'$   
 $DS = 75$  mph  
 $e = 04$   
 $RO = 200.00'$

I, Parks H. Ieshour Jr., certify that the right of way and permanent easement monumentation for this project shown herein was completed under my direct and responsible charge from an actual survey made under my supervision; that all horizontal closures had a minimum ratio of precision of 1:10,000 (Class A). Field work was performed from 07/08/2021 to 10/08/2021, and all coordinates are based on NAD83/2011; That this survey was performed to meet the requirements of 21NCAC 56.1600 as applicable.  
 This 25TH day of October, 2021.  
 Professional Land Surveyor L-3996



40  
**NO CLAIM**  
 PAM PETTY  
 WILL 18-E PG 590  
 MB 33 PG 70

42  
**NO CLAIM**  
 PAM PETTY  
 WILL 18-E PG 590  
 MB 33 PG 70

42  
**NO CLAIM**  
 PAM PETTY  
 WILL 18-E PG 590  
 MB 33 PG 70

43  
**NO CLAIM**  
 FLOYD & DAVID POWERS  
 DB 8F PG 237-238

41  
 FLOYD & DAVID POWERS  
 DB 8F PG 237-238

HEAVARD OXENDINE  
 DB 1449 PG 194  
 MB 29 PG 140

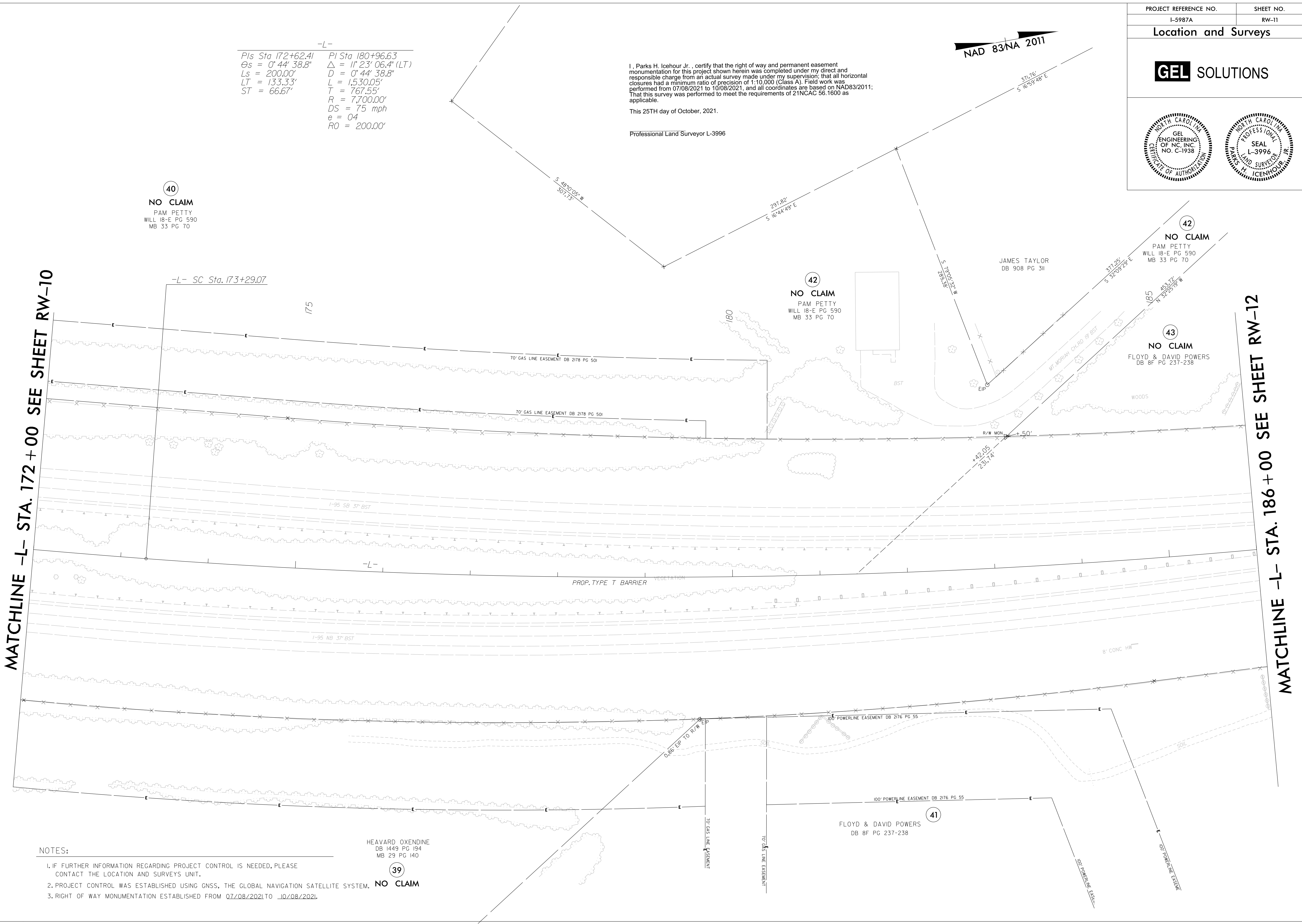
39  
**NO CLAIM**

NOTES:

1. IF FURTHER INFORMATION REGARDING PROJECT CONTROL IS NEEDED, PLEASE CONTACT THE LOCATION AND SURVEYS UNIT.
2. PROJECT CONTROL WAS ESTABLISHED USING GNSS, THE GLOBAL NAVIGATION SATELLITE SYSTEM.
3. RIGHT OF WAY MONUMENTATION ESTABLISHED FROM 07/08/2021 TO 10/08/2021.

MATCHLINE -L- STA. 172 + 00 SEE SHEET RW-10

MATCHLINE -L- STA. 186 + 00 SEE SHEET RW-12



REVISIONS

23-OCT-2021 08:21  
 C:\cadd\5987A\ROW\Fr-om\_dot\_revised\CADD\_02 (3)\Pro\15987A\_L-1s\_rw11.dgn  
 George Hart  
 AL GEORGE