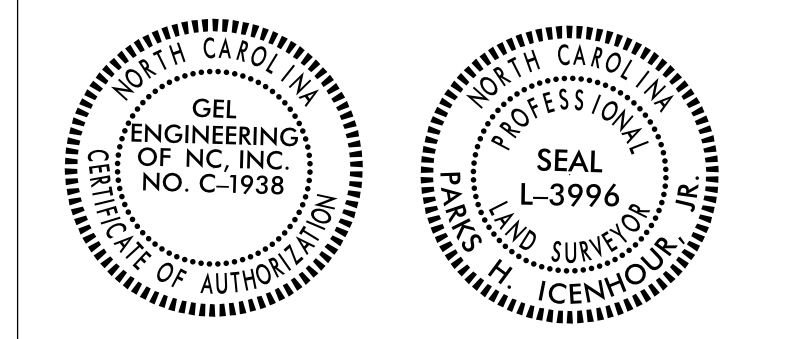


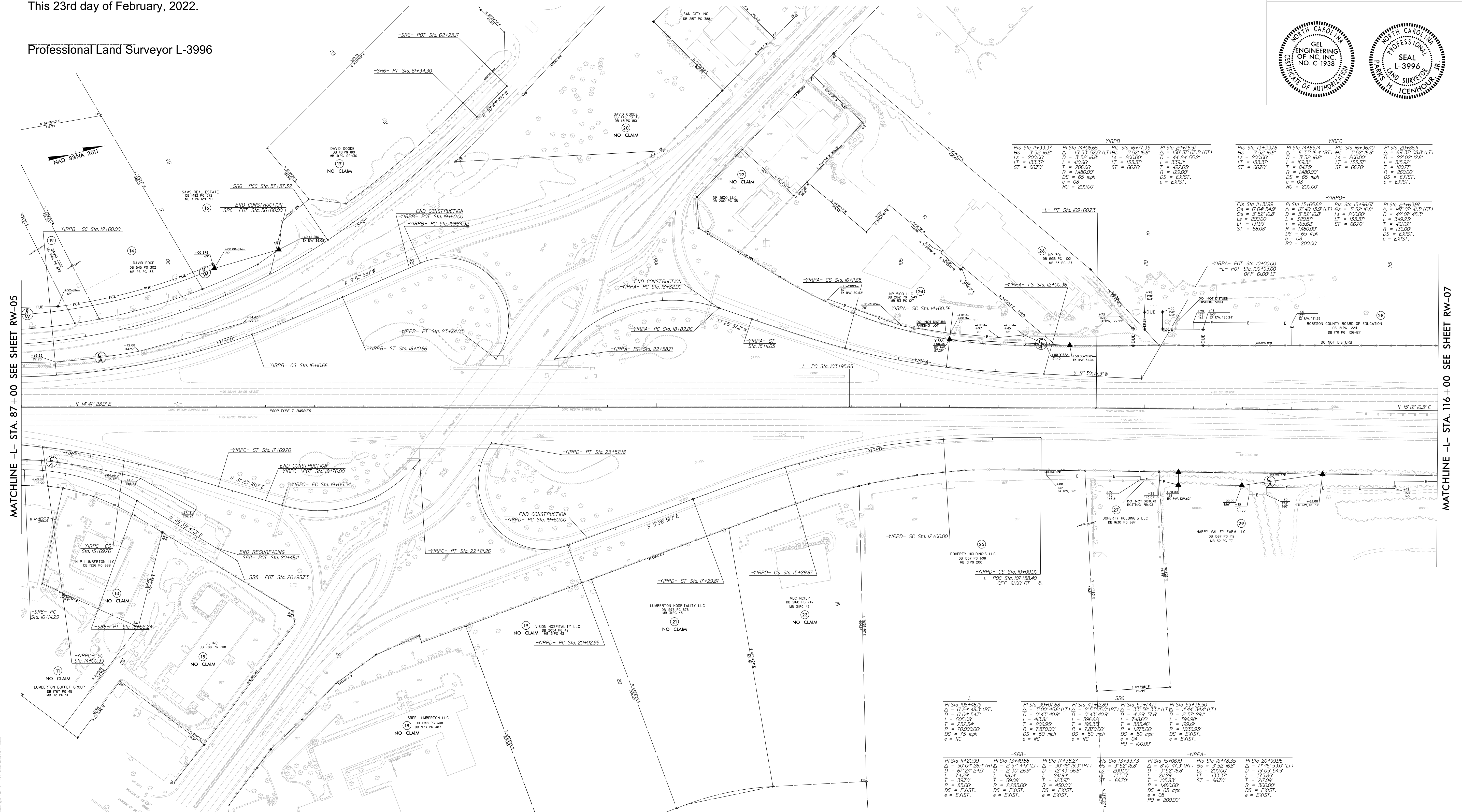
Location and Surveys



I, Parks H. Icehour Jr., certify that the right of way and permanent easement monumentation for this project shown herein was completed under my direct and responsible charge from an actual survey made under my supervision; that all horizontal closures had a minimum ratio of precision of 1:10,000 (Class A). Field work was performed from 07/08/2021 to 10/08/2021, and all coordinates are based on NAD83/2011; That this survey was performed to meet the requirements of 21NCAC 56.1600 as applicable.

This 23rd day of February, 2022.

Professional Land Surveyor L-3996



-YIRPB-		-YIRPB-		-YIRPB-	
PI Sta 11+33.37 Δ = 3°52'16.8" Ls = 200.00' LT = 133.37' ST = 66.70'	PI Sta 14+06.66 Δ = 15°31'52.9" Ls = 200.00' LT = 133.37' ST = 66.70'	PI Sta 16+77.35 Δ = 15°31'52.9" Ls = 200.00' LT = 133.37' ST = 66.70'	PI Sta 24+76.97 Δ = 15°31'52.9" Ls = 200.00' LT = 133.37' ST = 66.70'	PI Sta 13+33.37 Δ = 3°52'16.8" Ls = 200.00' LT = 133.37' ST = 66.70'	PI Sta 14+85.24 Δ = 6°13'46.4" Ls = 200.00' LT = 133.37' ST = 66.70'
DS = 65 mph e = 08 RO = 200.00'	DS = 65 mph e = 08 RO = 200.00'	DS = 65 mph e = 08 RO = 200.00'	DS = 65 mph e = 08 RO = 200.00'	DS = 65 mph e = 08 RO = 200.00'	DS = 65 mph e = 08 RO = 200.00'

NOTES:

- IF FURTHER INFORMATION REGARDING PROJECT CONTROL IS NEEDED, PLEASE CONTACT THE LOCATION AND SURVEYS UNIT.
- PROJECT CONTROL WAS ESTABLISHED USING GNSS, THE GLOBAL NAVIGATION SATELLITE SYSTEM.
- RIGHT OF WAY MONUMENTATION ESTABLISHED FROM 07/08/21 TO 10/08/21.

REVISIONS

MATCHLINE -L- STA. 87+00 SEE SHEET RW-05

MATCHLINE -L- STA. 116+00 SEE SHEET RW-07

23-FEB-2022 02:42
 C:\p\2022\15987A\15987A.dwg
 George Hart
 L-5987A\15987A.dwg
 2-22-2022
 George Hart