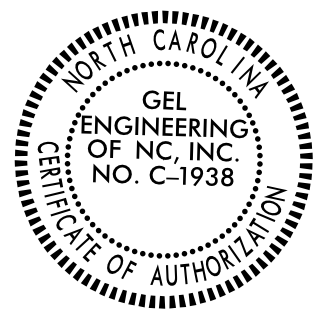

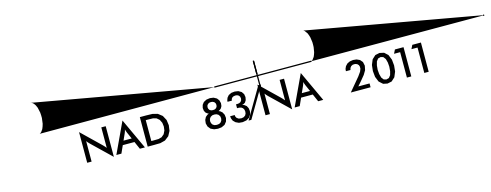


PROJECT REFERENCE NO. I-5987A	SHEET NO. RW-05
Location and Surveys	
GEL SOLUTIONS	
 NORTH CAROLINA PROFESSIONAL ENGINEER L-3996 STATE OF NORTH CAROLINA	 NORTH CAROLINA PROFESSIONAL SURVEYOR L-3996 STATE OF NORTH CAROLINA

NOTES:
 1. IF FURTHER INFORMATION REGARDING PROJECT CONTROL IS NEEDED PLEASE CONTACT THE LOCATION AND SURVEYS UNIT.
 2. PROJECT CONTROL WAS ESTABLISHED USING GNSS, THE GLOBAL NAVIGATION SATELLITE SYSTEM.
 3. RIGHT OF WAY MONUMENTATION ESTABLISHED 07/08/2021 TO 10/08/2021.

I, Parks H. Ioshour Jr., certify that the right of way and permanent easement monumentation for this project shown herein was completed under my direct and responsible charge from an actual survey made under my supervision; that all horizontal closures had a minimum ratio of precision of 1:10,000 (Class A). Field work was performed from 07/08/2021 to 10/08/2021, and all coordinates are based on NAD83/2011. That this survey was performed to meet the requirements of 21NCAC 56.1600 as applicable.
 This 25TH day of October, 2021.

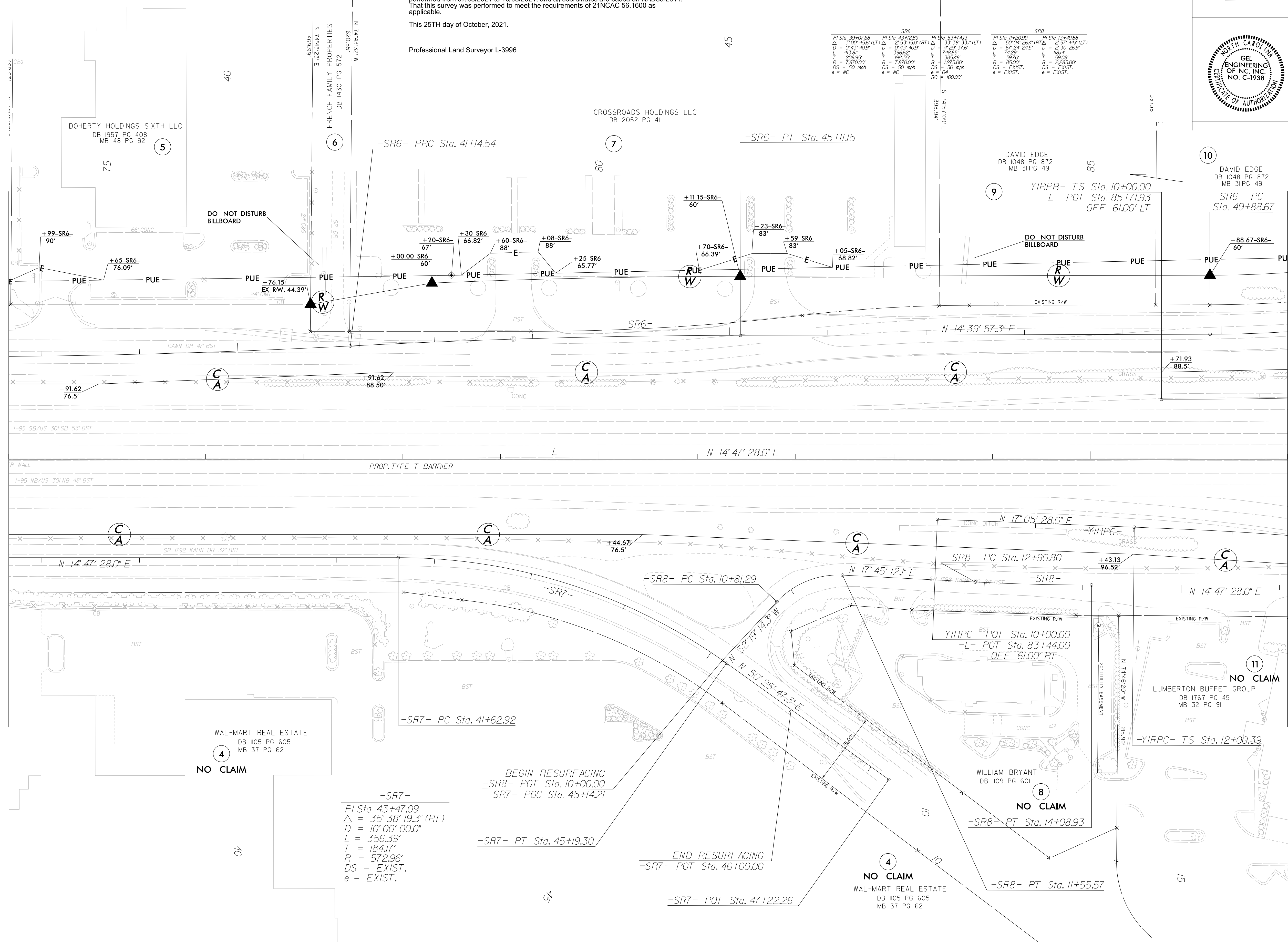
Professional Land Surveyor L-3996



-SR6-		-SR8-	
PI Sta 39+07.68	PI Sta 43+12.89	PI Sta 53+14.13	PI Sta 11+20.99
Δ = 3°00'45.6" (LT)	Δ = 2°53'15.0" (RT)	Δ = 3°30'33.5" (LT)	Δ = 90°04'26.4" (RT)
D = 1743.402'	D = 643.402'	D = 429.372'	D = 67.942'
L = 41.38'	L = 396.62'	L = 748.65'	L = 18.14'
T = 208.95'	T = 398.35'	T = 398.35'	T = 59.08'
R = 7870.00'	R = 7870.00'	R = 1275.00'	R = 85.00'
DS = 50 mph	DS = 50 mph	DS = 50 mph	DS = EXIST.
e = NC	e = NC	e = 04	e = EXIST.
		RO = 100.00'	

MATCHLINE -L- STA. 74+00 SEE SHEET RW-04

MATCHLINE -L- STA. 87+00 SEE SHEET RW-06



-SR7-
 PI Sta 43+47.09
 Δ = 35°38'19.3" (RT)
 D = 10'00'00.0"
 L = 356.39'
 T = 184.17'
 R = 572.96'
 DS = EXIST.
 e = EXIST.

BEGIN RESURFACING
 -SR8- POT Sta. 10+00.00
 -SR7- POC Sta. 45+14.21
 -SR7- PT Sta. 45+19.30

END RESURFACING
 -SR7- POT Sta. 46+00.00

-SR7- POT Sta. 47+22.26

NO CLAIM
 WAL-MART REAL ESTATE
 DB 1105 PG 605
 MB 37 PG 62

NO CLAIM
 LUMBERTON BUFFET GROUP
 DB 1767 PG 45
 MB 32 PG 91

REVISIONS

C:\Users\George.Hart\OneDrive\Documents\Projects\I-5987A\Drawings\I-5987A-RW-05.dgn
 George.Hart
 23-OCT-2021 08:02