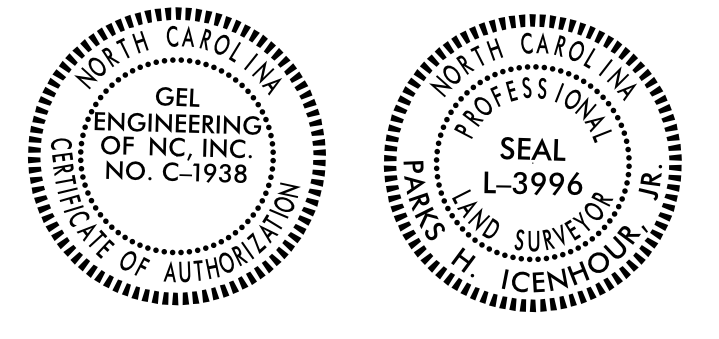


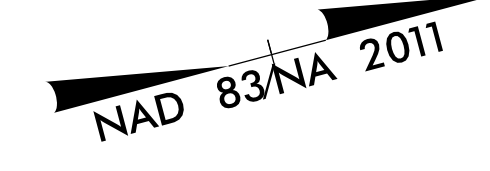
Location and Surveys



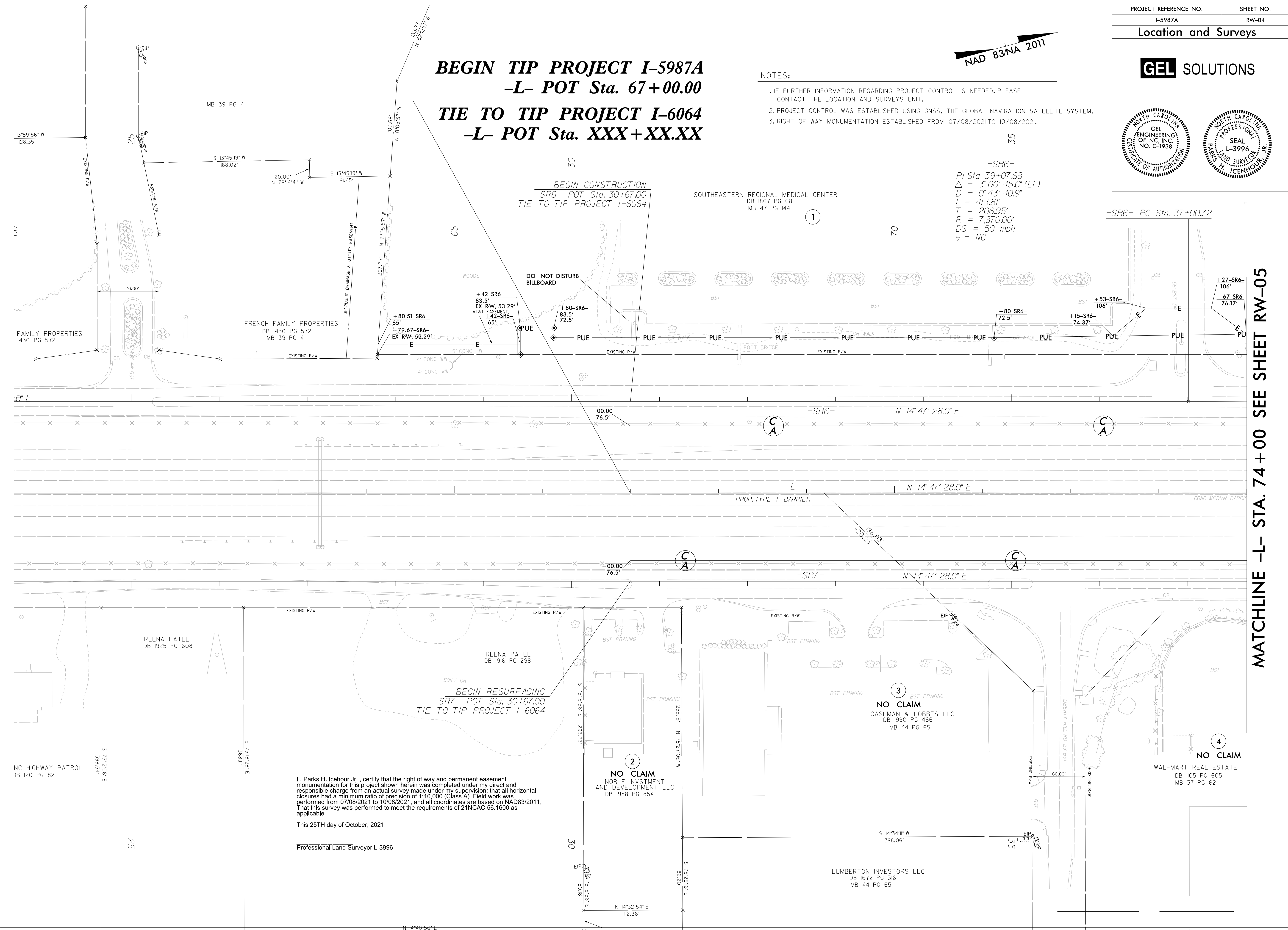
BEGIN TIP PROJECT I-5987A -L- POT Sta. 67+00.00 TIE TO TIP PROJECT I-6064 -L- POT Sta. XXX+XX.XX

NOTES:

- 1. IF FURTHER INFORMATION REGARDING PROJECT CONTROL IS NEEDED, PLEASE CONTACT THE LOCATION AND SURVEYS UNIT.
2. PROJECT CONTROL WAS ESTABLISHED USING GNSS, THE GLOBAL NAVIGATION SATELLITE SYSTEM.
3. RIGHT OF WAY MONUMENTATION ESTABLISHED FROM 07/08/2021 TO 10/08/2021.



-SR6-
PI Sta 39+07.68
Delta = 3' 00" 45.6" (LT)
D = 0' 43" 40.9"
L = 413.81'
T = 206.95'
R = 7,870.00'
DS = 50 mph
e = NC



REVISIONS

MATCHLINE -L- STA. 74 + 00 SEE SHEET RW-05

Vertical text on the left margin containing file path and date information.

I, Parks H. Icehour Jr., certify that the right of way and permanent easement monumentation for this project shown herein was completed under my direct and responsible charge from an actual survey made under my supervision; that all horizontal closures had a minimum ratio of precision of 1:10,000 (Class A). Field work was performed from 07/08/2021 to 10/08/2021, and all coordinates are based on NAD83/2011; That this survey was performed to meet the requirements of 21NCAC 56.1600 as applicable.

This 25TH day of October, 2021.

Professional Land Surveyor L-3996

NC HIGHWAY PATROL
3B I2C PG 82

REENA PATEL
DB 1925 PG 608

REENA PATEL
DB 1916 PG 298

NO CLAIM
CASHMAN & HOBBS LLC
DB 1990 PG 466
MB 44 PG 65

NO CLAIM
NOBLE INVESTMENT
AND DEVELOPMENT LLC
DB 1958 PG 854

LUMBERTON INVESTORS LLC
DB 1672 PG 316
MB 44 PG 65

NO CLAIM
WAL-MART REAL ESTATE
DB 1105 PG 605
MB 37 PG 62